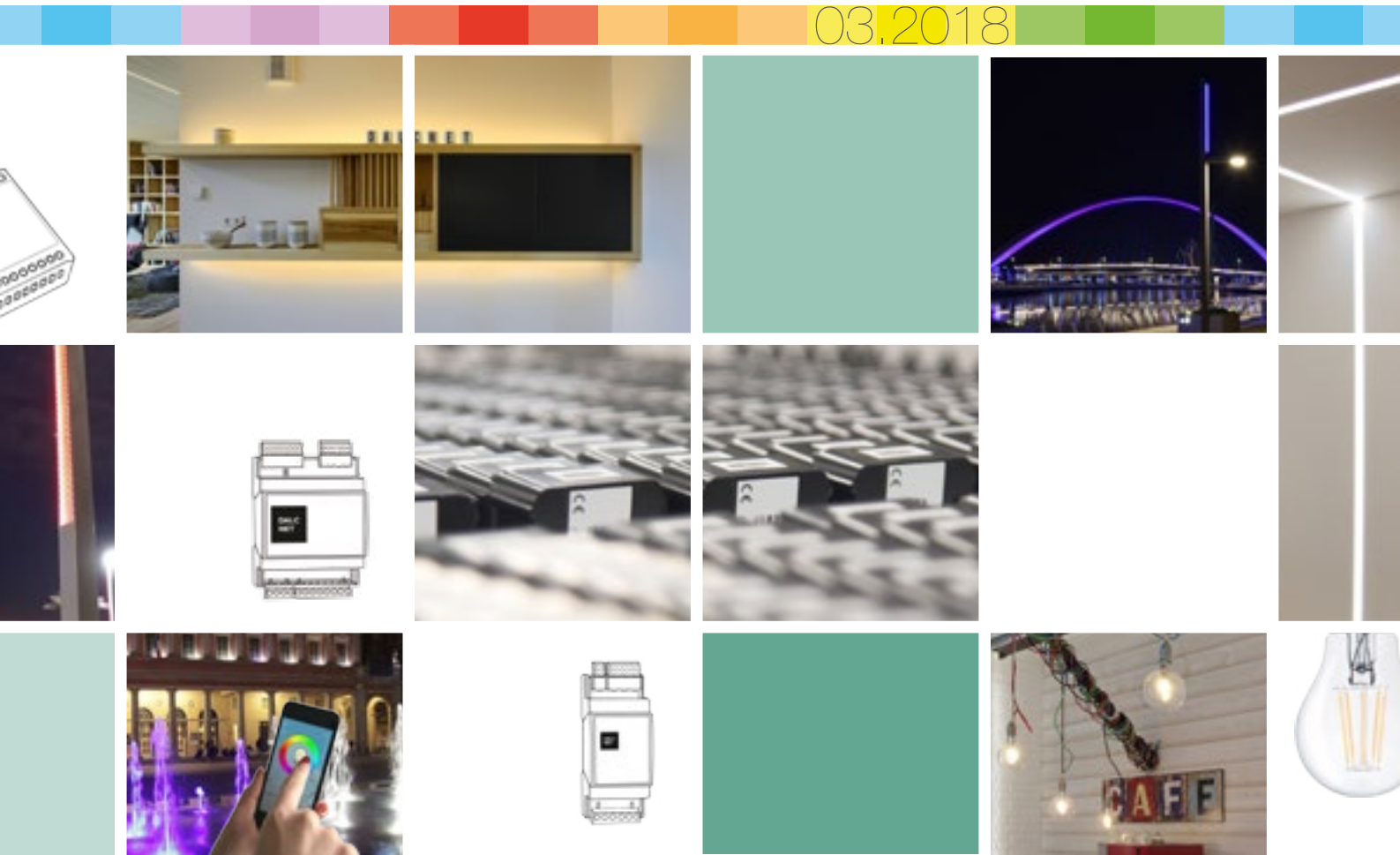


**DALC  
NET**

L I G H T I N G  
S O L U T I O N S

03, 2018



## SUMMARY

- LED DIMMER DLC 1CH . . . . .	4	
- LED DIMMER DLM 1CH AUTO DETECTION . . . . .	6	NEW!
- LED DIMMER DLM 1CH AUTO DETECTION DALI - DMX . . . . .	8	NEW!
- LED DIMMER DLB 1CH CC DALI - DMX . . . . .	10	
- LED DIMMER DLC MULTI CHANNEL SEQUENCER . . . . .	12	
- LED DIMMER DLX 4CH MULTIFUNCTION . . . . .	14	
- LED DIMMER DLX 4CH MULTIFUNCTION DALI - DMX . . . . .	16	
- LED BOOSTER DLA AMPLIFIER 1CH . . . . .	18	
- LED BOOSTER DLA AMPLIFIER 4CH . . . . .	20	
- LED DIMMER PRO DLP 4CH DALI - DMX - RJ45 . . . . .	22	NEW!
- LED DIMMER PRO DLP 6CH DALI - DMX - RJ45 . . . . .	22	NEW!
- LED DIMMER PRO DLD 1CH . . . . .	24	
- LED DIMMER PRO DLD 1CH MULTIBUS . . . . .	26	
- LED DIMMER PRO DLD 4CH MULTIBUS . . . . .	28	
- LED DIMMER PRO DLD 12CH MULTIBUS . . . . .	30	NEW!
- RELAY DRIVER PRO DLD 4CH MULTIBUS . . . . .	32	
- LED DIMMER DLB 1CH BLE . . . . .	34	
- LED DIMMER DLX 4CH BLE . . . . .	36	
- LED DIMMER DLX 4CH CASAMBI . . . . .	38	
- LED DIMMER DLC 1CH CASAMBI . . . . .	40	NEW!
- TIMER-CASAMBI - DGD GATEWAY . . . . .	41	NEW!
- DIM CONVERTER ADC CASAMBI . . . . .	42	NEW!
- RELAY DRIVER DLD 4CH CASAMBI . . . . .	43	NEW!
- TOUCH LED DIMMER DLT . . . . .	45	NEW!
- AC DIMMER 230 1CH . . . . .	46	NEW!
- AC DIMMER 230 4CH DALI - DMX . . . . .	48	NEW!
- AC DIMMER 230 8CH DALI - DMX . . . . .	49	NEW!
- SERVER GATEWAY DGM . . . . .	50	
- DIM CONVERTER ADC . . . . .	54	
- POWER SUPPLY PSU DALI . . . . .	54	
- SPLITTER DMX 2CH . . . . .	56	
- SPLITTER DMX 4CH . . . . .	57	
- DGD GATEWAY . . . . .	58	NEW!
- DMX HUB 2CH . . . . .	59	
- TOUCH CONTROLLER . . . . .	60	NEW!
- TOUCH CONTROLLER DTD . . . . .	62	NEW!
- LED STRIP . . . . .	63	NEW!
- LED DRIVER . . . . .	64	
- INFORMATION . . . . .	66	

EASY LINE

PRO LINE

BLE  
CASAMBITOUCH  
AC 230GATEWAY  
SPLITTERTOUCH  
HUB

INFO

DALCNET s.r.l.

Via A. Meucci, 35 - 36040 Brendola (VI) Italy

Tel. +39 0444 1836680 - www.dalcnet.com - info@dalcnet.com



DALCNET è un'azienda che si occupa della ricerca, sviluppo e progettazione di soluzioni innovative nel campo dell'illuminazione e della progettazione elettronica.

Collabora con i principali produttori nazionali ed internazionali nel settore illuminazione e integrazione, realizzando prodotti in OEM e ODM per i settori illuminotecnico, automazione industriale, nautico e building automation.

Mette a disposizione del cliente il know how acquisito negli anni dal suo team di ingegneri, garantendo supporto tecnico ed elevata qualità nella progettazione di sistemi di controllo per l'illuminazione e moduli a Led.

Dalcnet produce e commercializza un'ampia gamma di dimmer e driver che permettono il controllo e la gestione di complessi sistemi di illuminazione, interfacciandosi con i più diffusi sistemi di controllo presenti sul mercato quali: push-button, 0-10V,1-10V, DALI, DMX512, DMX/RDM, MODBUS, ETHERNET, ARTNET, CASAMBI, BLUEDIMMER.

La continua attività di R&D che da sempre ha contraddistinto Dalcnet sul mercato, l'ha portata a depositare negli anni dei brevetti per tutelare e valorizzare ulteriormente l'innovazione dei suoi prodotti.

Dalcnet dà valore alle idee e porta innovazione nel campo dell'illuminazione.



DALCNET is a company involved in the research, development and design of innovative lighting solutions and electronic design.

It has partnerships with the main national and international manufacturers in the lighting and integration sector, making OEM and ODM products for the lighting engineering, industrial automation, nautical and building automation sectors.

It can offer customers the know-how that its engineering team has gained over the years, ensuring high-quality technical support in the design of control systems for lighting and LED modules.

Dalcnet manufactures and markets a wide range of dimmers and drivers that can control and manage complex lighting systems, interfacing with the most widely used control systems on the market, such as: push-button, 0-10V,1-10V, DALI, DMX512, DMX/RDM, MODBUS, ETHERNET, ARTNET, CASAMBI, BLUEDIMMER.

Over the years, the continuous R&D activity that has always distinguished Dalcnet on the market has led it to file patents to protect and add further value to the innovation of its products.

Dalcnet gives value to ideas and brings innovation to the field of lighting.



DALCNET ist ein Unternehmen, das sich mit der Erforschung, Entwicklung und Planung von innovativen Lösungen auf dem Gebiet des Licht- und Elektronikdesigns beschäftigt.

Es arbeitet mit führenden nationalen und internationalen Herstellern im Bereich Beleuchtung und Integration zusammen und entwickelt OEM- und ODM-Produkte für die Bereiche Lichttechnik, Industrieautomation, Schifffahrt und Gebäudeautomation.

Es stellt dem Kunden das Know-how zur Verfügung, das im Laufe der Jahre von seinem Team von Ingenieuren erworben wurde, und garantiert dadurch technische Unterstützung und ausgezeichnete Qualität bei der Entwicklung von Lichtsteuerungssystemen und LED-Modulen.

Dalcnet produziert und vermarktet eine breite Palette von Dimmern und Treibern, die die Steuerung und Verwaltung komplexer Beleuchtungssysteme ermöglichen und mit den gängigsten Steuerungssystemen auf dem Markt verbunden werden können, z.B.: Taster, 0-10V, 1-10V, DALI, DMX512, DMX/RDM, MODBUS, ETHERNET, ARTNET, CASAMBI, BLUEDIMMER.

Die kontinuierliche Forschungs- und Entwicklungsarbeit, die Dalcnet seit jeher auf dem Markt auszeichnet, hat dazu geführt, dass Dalcnet im Laufe der Jahre Patente angemeldet hat, um die Innovation seiner Produkte zu schützen und weiter zu verbessern.

Dalcnet schätzt neue Ideen und schafft Innovationen im Bereich der Beleuchtung.



DALCNET est une entreprise engagée dans la recherche, le développement et la conception de solutions innovantes dans le secteur de l'éclairage et de la conception électronique.

Elle collabore avec les principaux producteurs nationaux et internationaux dans le secteur de l'éclairage et de l'intégration, en réalisant des produits OEM et ODM pour les secteurs de l'éclairage, de l'automatisation industrielle, du nautisme et de l'automatisation de bâtiments.

Elle met son savoir-faire acquis au fil des années par son équipe d'ingénieurs à disposition de ses clients, en garantissant une assistance technique et un niveau de qualité élevé durant la conception de systèmes de commande pour l'éclairage et les modules à Led.

Dalcnet produit et commercialise une vaste gamme de gradateurs et de pilotes qui permettent de contrôler et de gérer des systèmes d'éclairage complexes, en s'interfaçant avec les systèmes de contrôle les plus répandus sur le marché tels que : bouton-poussoirs, 0-10V,1-10V, DALI, DMX512, DMX/RDM, MODBUS, ETHERNET, ARTNET, CASAMBI, BLUEDIMMER.

L'activité permanente de Recherche et de Développement qui distingue depuis toujours Dalcnet sur le marché, l'a amenée au fil des années à déposer de nombreux brevets pour protéger et valoriser davantage l'innovation de ses produits.

Dalcnet donne de la valeur aux idées et apporte de l'innovation dans le secteur de l'éclairage.



DALCNET es una empresa que se dedica a la investigación, desarrollo y diseño de soluciones innovadoras en el sector de la iluminación y del diseño electrónico.

Colabora con los principales fabricantes italianos e internacionales del sector de iluminación e integración, realizando productos en OEM y ODM para los sectores luminotécnico, automatización industrial, náutico y automatización de edificios.

Pone a disposición del cliente el know how adquirido por sus ingenieros a lo largo de los años, garantizando soporte técnico y alta calidad en el diseño de sistemas de control para la iluminación y módulos de LED.

Dalcnet produce y comercializa una amplia gama de atenuadores y drivers que permiten el control y la gestión de sistemas de iluminación complejos, interactuándose con los sistemas de control más utilizados en el mercado, a saber: pulsadores, 0-10V, 1-10V, DALI, DMX512, DMX/RDM, MODBUS, ETHERNET, ARTNET, CASAMBI, BLUEDIMMER.

La continua actividad de I+D que siempre ha distinguido a Dalcnet en el mercado, la ha llevado a depositar patentes para proteger y valorizar aún más la innovación de sus productos. Dalcnet da valor a las ideas y contribuye con innovación en el campo de la iluminación.

**FEATURES DLC SINGLE CHANNEL**

DIMMER+FADER+DRIVER

DC Input: 12-24V DC or 12-48V DC

Command: N.O. Push-button

Command (version 110) : 0-10V / 1-10V / Potentiometer

Current or Voltage Outputs for R loads or R-L-C loads

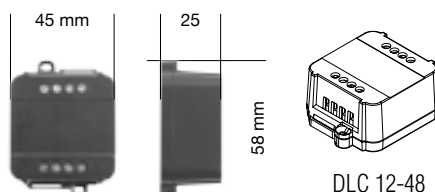
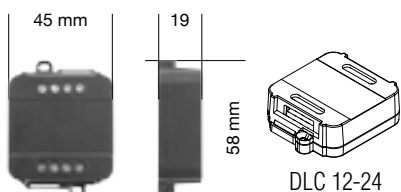
Typical efficiency &gt; 95%

Adjusting the brightness up to completed off

Soft start and soft stop

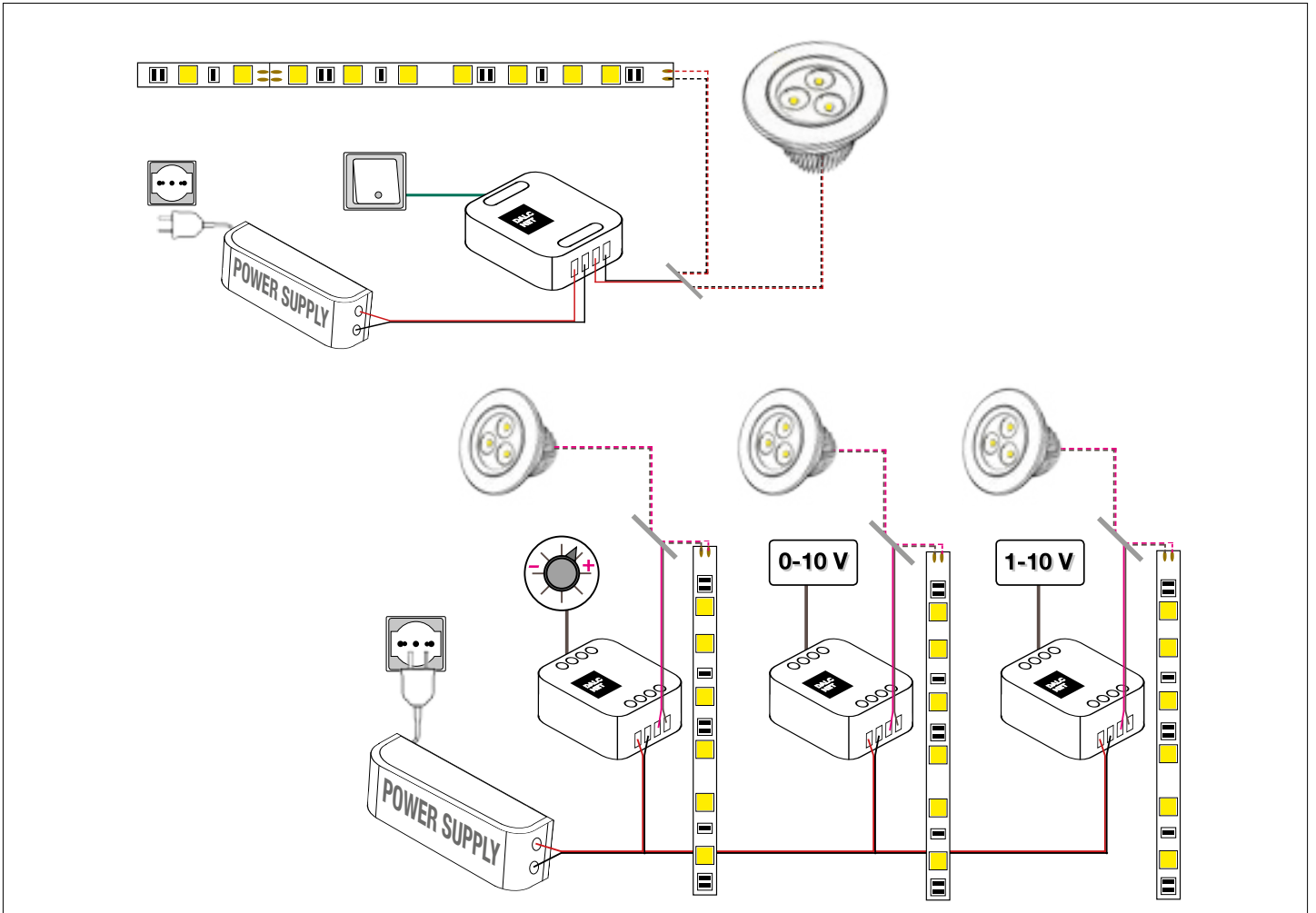
Optimized Output curve

100% functional test - 5 years warranty



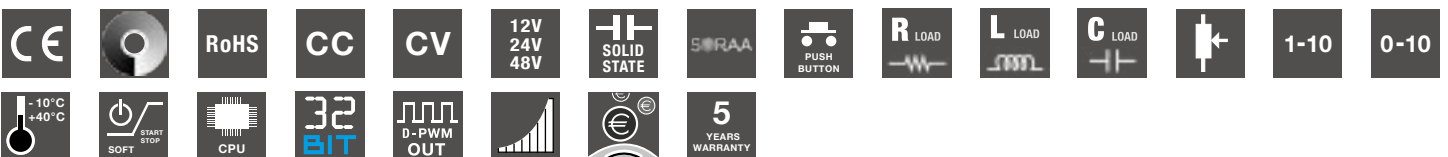
CODE	CV / CC	Supply Voltage	Output	Channels	Command
<b>DLC1224-1CV</b>	CV	12-24V DC	1 x 10A	1	N.O. Push button
<b>DLC1248-1CV</b>	CV	12-48V DC	1 x 6,5A	1	N.O. Push button
<b>DLC1248-1CC350</b>	CC	12-48V DC	1 x 350mA	1	N.O. Push button
<b>DLC1248-1CC500</b>	CC	12-48V DC	1 x 500mA	1	N.O. Push button
<b>DLC1248-1CC700</b>	CC	12-48V DC	1 x 700mA	1	N.O. Push button
<b>DLC1248-1CC950</b>	CC	12-48V DC	1 x 950mA	1	N.O. Push button
<b>DLC1248-1CC350-110</b>	CC	12-48V DC	1 x 350mA	1	Analog signal 0-10V / 1-10V / Potentiometer
<b>DLC1248-1CC500-110</b>	CC	12-48V DC	1 x 500mA	1	Analog signal 0-10V / 1-10V / Potentiometer
<b>DLC1248-1CC700-110</b>	CC	12-48V DC	1 x 700mA	1	Analog signal 0-10V / 1-10V / Potentiometer
<b>DLC1248-1CC950-110</b>	CC	12-48V DC	1 x 950mA	1	Analog signal 0-10V / 1-10V / Potentiometer





## DLC SINGLE CHANNEL

	12-24V DC		12-48V DC				
	Constant Voltage		Constant Voltage	Constant Current			
Output Current	10 A		6,5 A	350 mA	500 mA	700 mA	950 mA
Nominal Power 12V	120 W		78 W	4.2 W	6 W	8.4 W	11.4 W
Nominal Power 24V	240 W		156 W	8.4 W	12 W	16.8 W	22.8 W
Nominal Power 48V	-		312 W	16.8 W	24 W	33.6 W	45.6 W
Supply Voltage	min: 10.8 Vdc - max: 26.4 Vdc		min: 10.8 Vdc - max: 52.8 Vdc				
D-PWM Dimming Frequency	300 Hz		300 Hz				
Ambient Temperature	min: -10 C° max: +40 C°		min: -10 C° max: +40 C°				
Protection Grade	IP20		IP20				
Mechanical Dimension	45 x 58 x 19 mm		45 x 58 x 25 mm				
Packaging Dimension	68 x 56 x 35 mm		68 x 56 x 35 mm				
Weight	37 g		43 g				



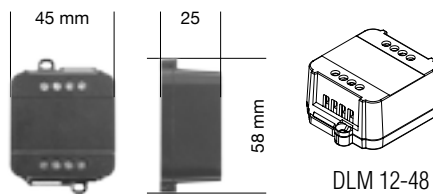
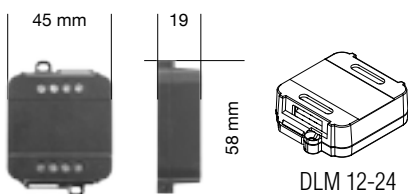




**FEATURES DLM SINGLE-CHANNEL**

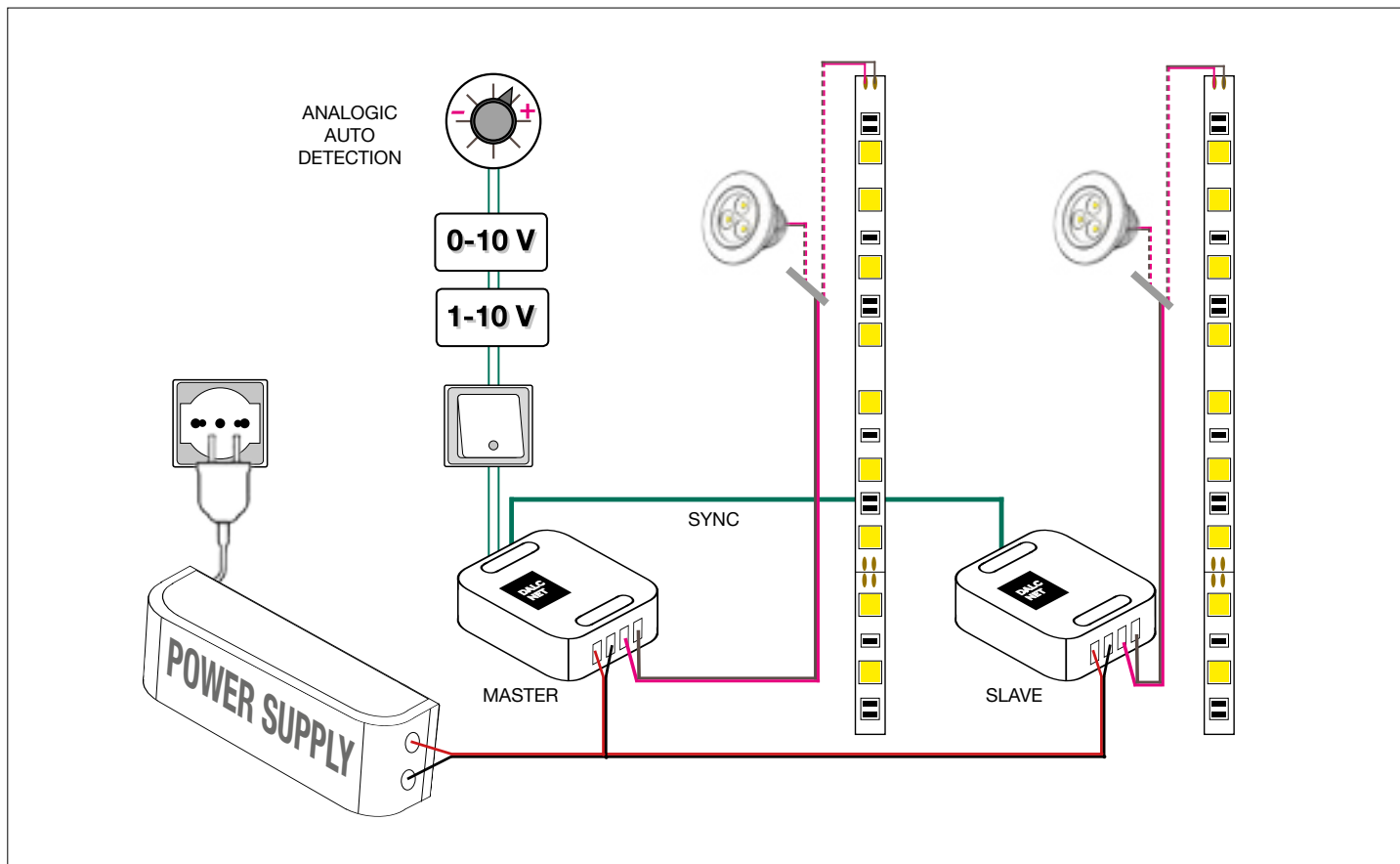
DIMMER+FADER+DRIVER
DC Input: 12-24V DC or 12-48V DC
Voltage Outputs for R loads or R-L-C loads
Analogic Auto Detection: N.O. Push-button / 0-10V / 1-10V / Potentiometer
Master / Slave
Adjusting the brightness up to completed off
Soft start and soft stop
Optimized Output curve
Typical efficiency > 95%
100% functional test - 5 years warranty

Push Menù	Minimun Level Setting
	Fade In / Fade Out

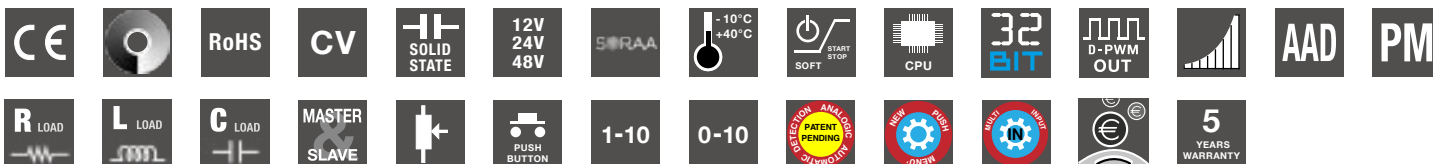


CODE	CV / CC	Supply Voltage	Output	Channels	Analogic Auto Detection
<b>DLM1224-1CV</b>	CV	12-24V DC	1 x 10A	1	N.O. Push Button / 0-10V / 1-10V / Potentiometer
<b>DLM1248-1CV</b>	CV	12-48V DC	1 x 6,5A	1	N.O. Push Button / 0-10V / 1-10V / Potentiometer





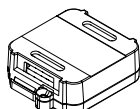
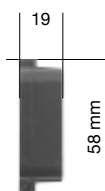
DLM SINGLE CHANNEL		
	12-24V DC	12-48V DC
	Constant Voltage	Constant Voltage
Output Current	10 A	6,5 A
Nominal Power 12V	120 W	78 W
Nominal Power 24V	240 W	156 W
Nominal Power 48V	-	312 W
Supply Voltage	min: 10.8 Vdc - max: 26.4 Vdc	min: 10.8 Vdc - max: 52.8 Vdc
D-PWM Dimming Frequency	300 Hz	300 Hz
Ambient Temperature	min: -10 C° max: +40 C°	min: -10 C° max: +40 C°
Protection Grade	IP20	IP20
Mechanical Dimension	45 x 58 x 19 mm	45 x 58 x 25 mm
Packaging Dimension	68 x 56 x 35 mm	68 x 56 x 35 mm
Weight	37 g	43 g



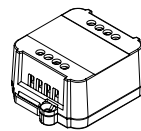
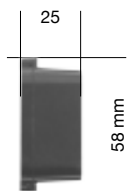


FEATURES DLM SINGLE-CHANNEL BUS
BUS+DIMMER+FADER+DRIVER
DC Input: 12-24V DC or 12-48V DC
BUS Command: DMX512-RDM or DALI
Analogic Auto Detection: N.O. Push-button / 0-10V / 1-10V / Potentiometer
Voltage Outputs for R loads or R-L-C loads
Typical efficiency > 95%
Adjusting the brightness up to completed off
Soft start and soft stop
Optimized Output curve
100% functional test - 5 years warranty

Push Menù	Minimun Level Setting
	Fade In / Fade Out



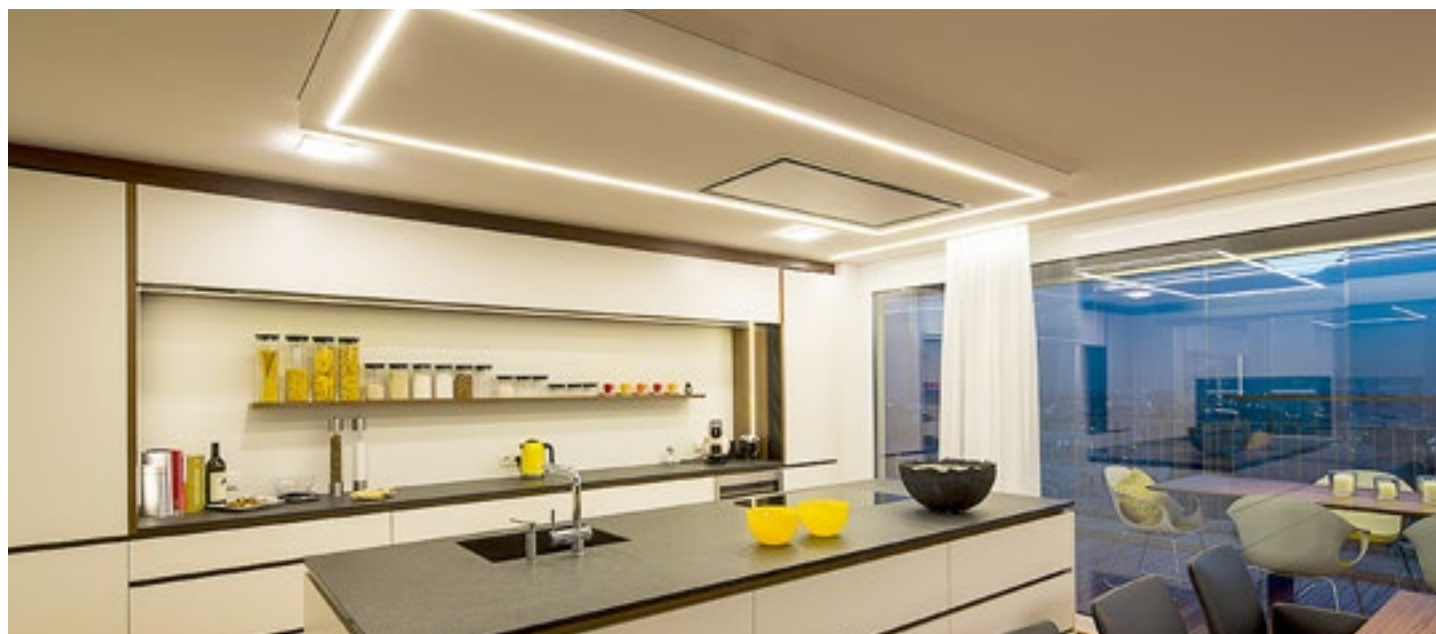
DLM 12-24



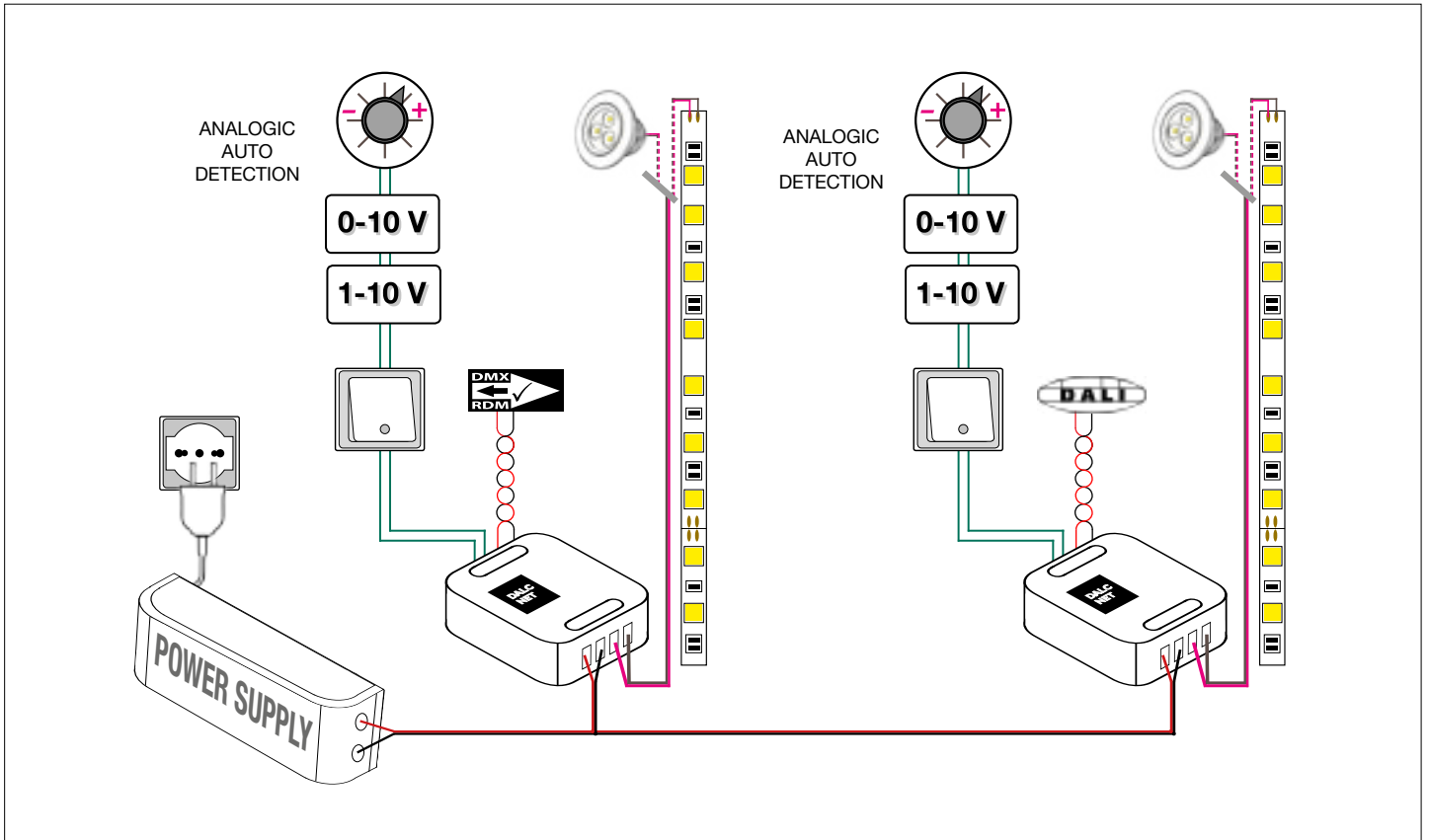
DLM 12-48



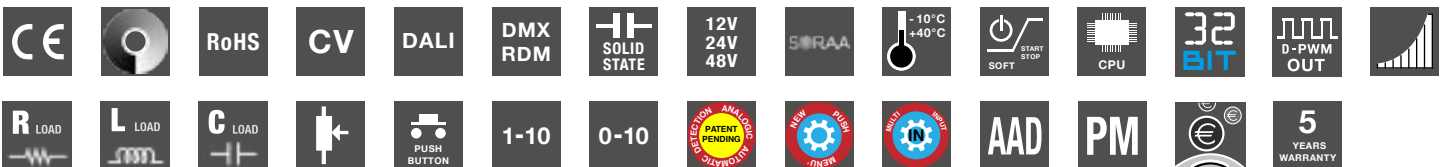
CODE	CV / CC	Supply Voltage	Output	Channels	Command
<b>DLM1224-1CV-DALI</b>	CV	12-24V DC	1 x 10A	1	DALI Analogic Auto Detection : N.O. Push button / 0-10V / 1-10V / Potentiometer
<b>DLM1224-1CV-DMX</b>	CV	12-24V DC	1 x 10A	1	DMX Analogic Auto Detection : N.O. Push button / 0-10V / 1-10V / Potentiometer
<b>DLM1248-1CV-DALI</b>	CV	12-48V DC	1 x 6,5A	1	DALI Analogic Auto Detection : N.O. Push button / 0-10V / 1-10V / Potentiometer
<b>DLM1248-1CV-DMX</b>	CV	12-48V DC	1 x 6,5A	1	DMX Analogic Auto Detection : N.O. Push button / 0-10V / 1-10V / Potentiometer







DLM SINGLE CHANNEL DALI DMX		
	12-24V DC	12-48V DC
	Constant Voltage	Constant Voltage
Output Current	10 A	6,5 A
Nominal Power 12V	120 W	78 W
Nominal Power 24V	240 W	156 W
Nominal Power 48V	-	312 W
Supply Voltage	min: 10.8 Vdc - max: 26.4 Vdc	min: 10.8 Vdc - max: 52.8 Vdc
D-PWM Dimming Frequency	300 Hz	300 Hz
Ambient Temperature	min: -10 C° max: +40 C°	min: -10 C° max: +40 C°
Protection Grade	IP20	IP20
Mechanical Dimension	45 x 58 x 19 mm	45 x 58 x 25 mm
Packaging Dimension	68 x 56 x 35 mm	68 x 56 x 35 mm
Weight	37 g	43 g





**FEATURES DLB SINGLE CHANNEL BUS**

BUS+DIMMER+FADER+DRIVER

DC Input: 12-24-48 Vdc

Local Command: N.O. Push-button

BUS Command: DMX512-RDM or DALI

Current Outputs

Adjusting the brightness of White light

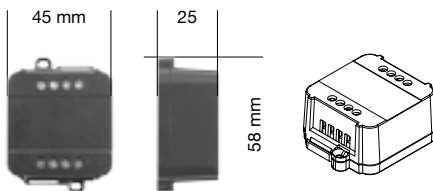
Typical efficiency > 95%

Adjusting the brightness up to completed off

Soft start and soft stop

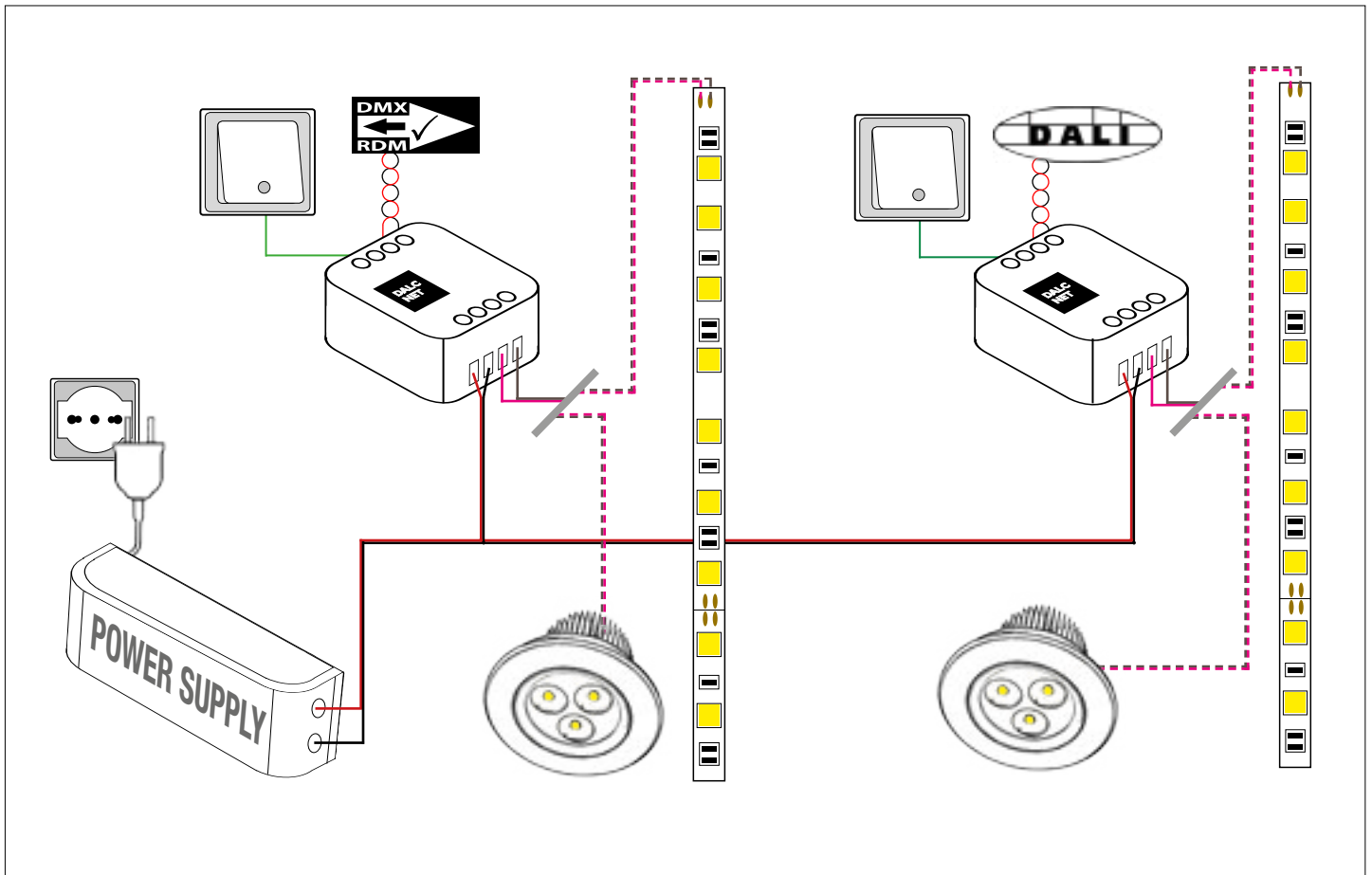
Optimized Output curve

100% functional test - 5 years warranty

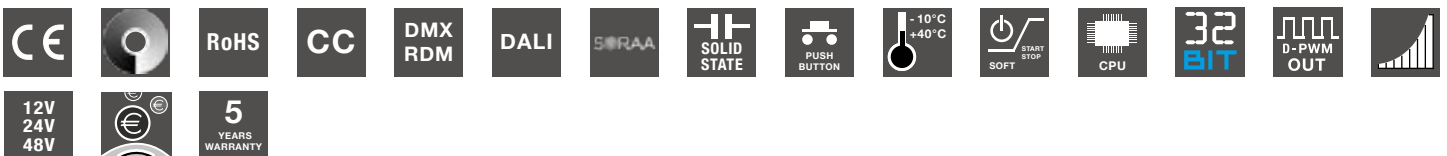


CODE	CV / CC	Supply Voltage	Output	Channels	Command
DLB1248-1CC350-DALI	CC	12-48V DC	1 x 350mA	1	DALI - 1 N.O. Push button
DLB1248-1CC350-DMX	CC	12-48V DC	1 x 350mA	1	DMX - 1 N.O. Push button
DLB1248-1CC500-DALI	CC	12-48V DC	1 x 500mA	1	DALI - 1 N.O. Push button
DLB1248-1CC500-DMX	CC	12-48V DC	1 x 500mA	1	DMX - 1 N.O. Push button
DLB1248-1CC700-DALI	CC	12-48V DC	1 x 700mA	1	DALI - 1 N.O. Push button
DLB1248-1CC700-DMX	CC	12-48V DC	1 x 700mA	1	DMX - 1 N.O. Push button
DLB1248-1CC950-DALI	CC	12-48V DC	1 x 950mA	1	DALI - 1 N.O. Push button
DLB1248-1CC950-DMX	CC	12-48V DC	1 x 950mA	1	DMX - 1 N.O. Push button





DLB SINGLE CHANNEL DALI or DMX				
	12-48V DC			
	Constant Current			
Output Current	350 mA	500 mA	700 mA	950 mA
Nominal Power 12V	4,2 W	6 W	8,4 W	11,4 W
Nominal Power 24V	8,4 W	12 W	16,8 W	22,8 W
Nominal Power 48V	16,8 W	24 W	33,6 W	45,6 W
Supply Voltage	min: 10.8 Vdc - max: 52.8 Vdc			
D-PWM Dimming Frequency	300 Hz			
Ambient Temperature	min: -10 C° max: +40 C°			
Protection Grade	IP20			
Mechanical Dimension	45 x 58 x 25 mm			
Packaging Dimension	68 x 56 x 35 mm			
Weight	45 g			



**FEATURES DLC SEQUENCER RGB or TW**

SEQUENCER+DIMMER+FADER+DRIVER

DC Input: 12-24-48 Vdc

Command: N.O. Push-button

TUNABLE White Control or RGB color control

Current or voltage outputs for LED strip

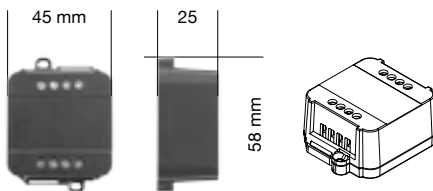
Typical efficiency &gt; 95%

Adjusting the brightness up to completed off

Soft start and soft stop

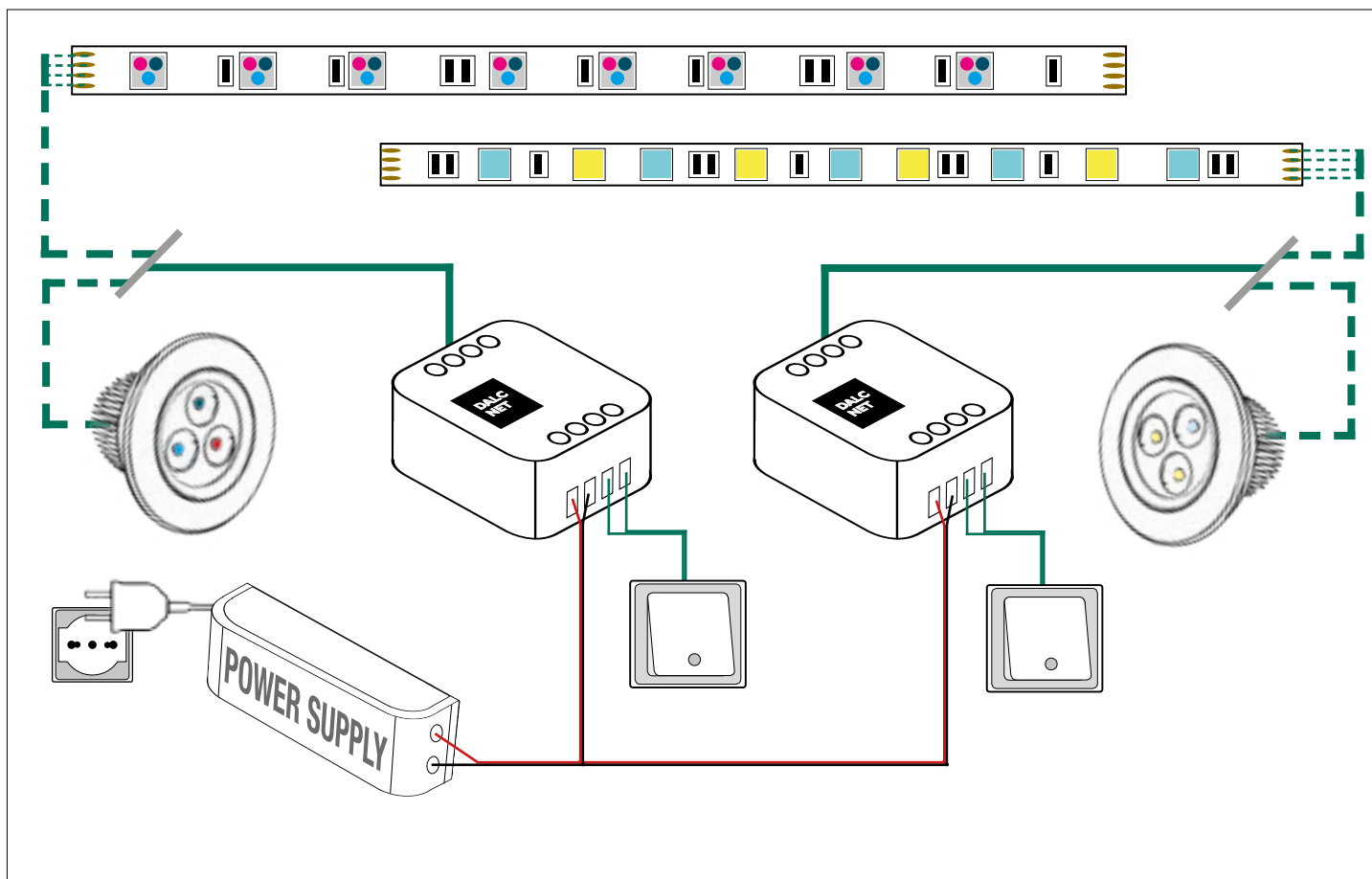
Optimized output curve

100% functional test - 5 years warranty



CODE	CV / CC	Supply Voltage	Output	Channels	Command
<b>DLC1248-2CV</b>	CV	12-48V DC	2 x 1,6A	2	N.O. Push button
<b>DLC1248-3CV</b>	CV	12-48V DC	3 x 1,6A	3	N.O. Push button
<b>DLC1248-2CC350</b>	CC	12-48V DC	2 x 350mA	2	N.O. Push button
<b>DLC1248-3CC350</b>	CC	12-48V DC	3 x 350mA	3	N.O. Push button
<b>DLC1248-2CC500</b>	CC	12-48V DC	2 x 500mA	2	N.O. Push button
<b>DLC1248-3CC500</b>	CC	12-48V DC	3 x 500mA	3	N.O. Push button
<b>DLC1248-2CC700</b>	CC	12-48V DC	2 x 700mA	2	N.O. Push button
<b>DLC1248-3CC700</b>	CC	12-48V DC	3 x 700mA	3	N.O. Push button





DLC MULTI CHANNEL RGB or TW																
	2 Channels								3 Channels							
	Constant Voltage		Constant Current						Constant Voltage		Constant Current					
Output Current	1,6 A / ch		350 mA		500 mA		700 mA		1,6 A / ch		350 mA		500 mA		700 mA	
	x ch	max	x ch	max	x ch	max	x ch	max	x ch	max	x ch	max	x ch	max	x ch	max
Nominal Power 12V	19,2 W	38,4 W	4,2	8,4	6	12	8,4	16,8	19,2 W	57,6 W	4,2	12,6	6	18	8,4	25,2
Nominal Power 24V	38,4 W	76,8 W	8,4	16,8	12	24	16,8	33,6	38,4 W	115,2 W	8,4	25,2	12	36	16,8	50,4
Nominal Power 48V	76,8 W	153,6 W	16,8	33,6	24	48	33,6	67,2	76,8 W	230,4 W	16,8	50,4	24	72	33,6	100,8
Supply Voltage	min: 10.8 Vdc - max: 52.8 Vdc								min: 10.8 Vdc - max: 52.8 Vdc							
D-PWM Dimming Frequency	300 Hz								300 Hz							
Ambient Temperature	min: -10 C° max: +40 C°								min: -10 C° max: +40 C°							
Protection Grade	IP20								IP20							
Mechanical Dimension	45 x 58 x 19 mm								45 x 58 x 25 mm							
Packaging Dimension	68 x 56 x 35 mm								68 x 56 x 35 mm							
Weight	40 g								40 g							

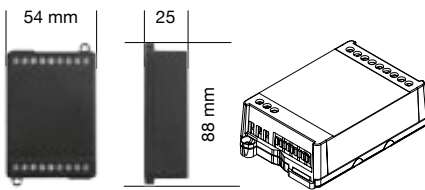






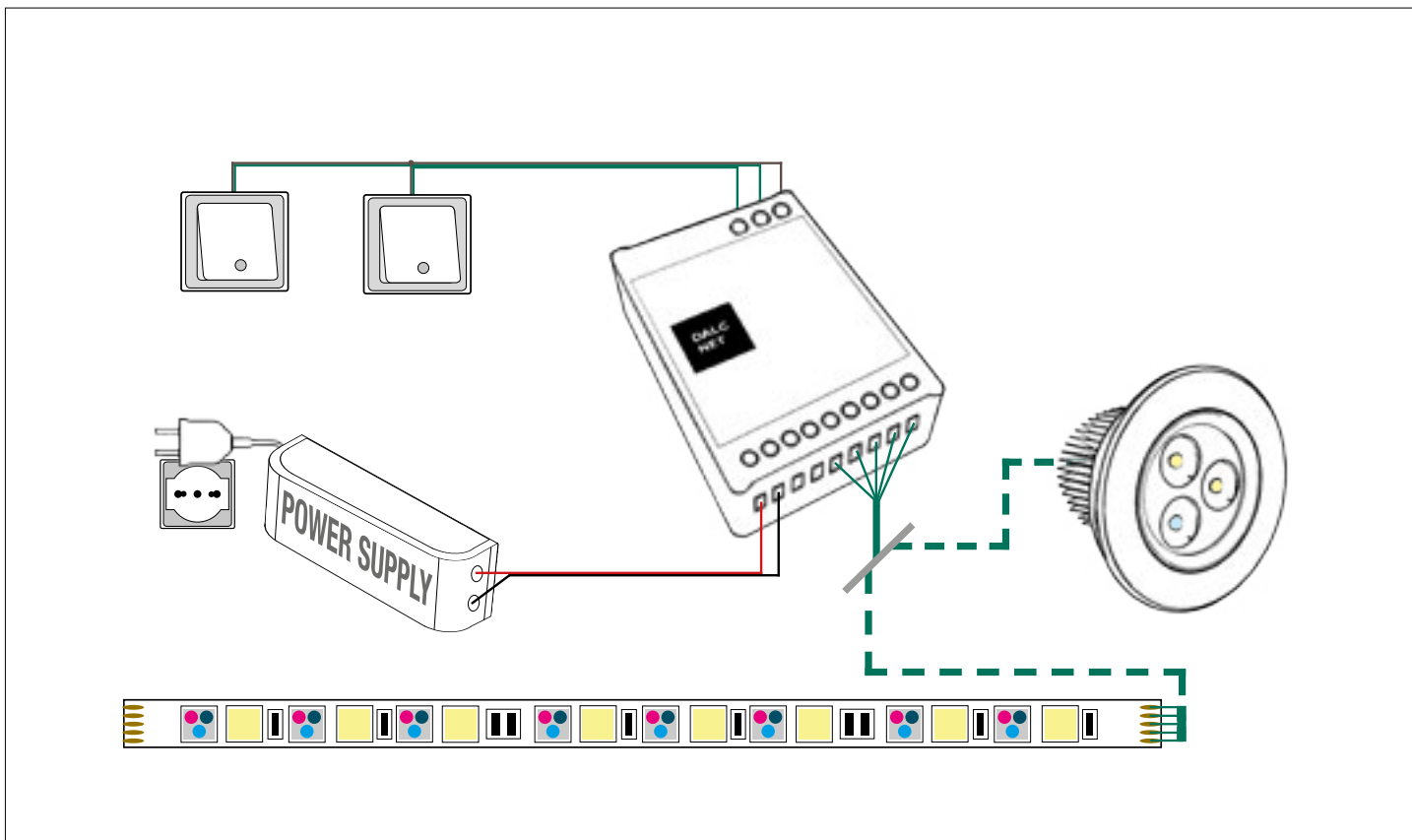
FEATURES DLX MULTI-CHANNEL
SEQUENCER+FADER+DIMMER+DRIVER
DC Input 12-24 Vdc
Local Command: 2 N.O. Push Buttons
Control: Dimmer, Tunable White, RGB or RGBW Color
Current outputs or voltage outputs for R loads
Typical efficiency > 95%
Adjusting the brightness up to completed off
Soft start and soft stop
Optimized output curve
100% functional test - 5 years warranty

ONE CHANNEL		TUNABLE WHITE		RGB		RGBW	
-------------	--	---------------	--	-----	--	------	--



CODE	CV / CC	Supply Voltage	Output	Channels	Command
<b>DLX1224-4CV</b>	CV	12-24V DC	4 x 5A (10A total)	4	2 N.O. Push buttons
<b>DLX1224-4CC350</b>	CC	12-24V DC	4 x 350mA	4	2 N.O. Push buttons
<b>DLX1224-4CC500</b>	CC	12-24V DC	4 x 500mA	4	2 N.O. Push buttons



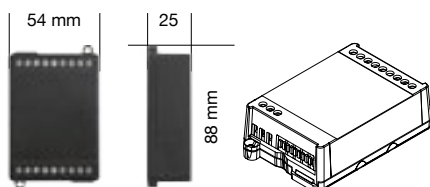


DLX MULTI CHANNEL						
	12-24V DC					
	Constant Voltage		Constant Current			
Output Current	5 A / ch		350 mA / ch		500 mA / ch	
Output Current Total	10 A total		1 ch	4 ch	1 ch	4 ch
Nominal Power 12V	60 W /ch	120 W	4,2 W /ch	16,8 W	6 W /ch	24 W
Nominal Power 24V	120 W /ch	240 W	8,4 W /ch	33,6 W	12 W /ch	48 W
Supply Voltage	min: 10.8 Vdc - max: 26.4 Vdc					
D-PWM Dimming Frequency	300 Hz					
Ambient Temperature	min: -10 C° max: +40 C°					
Protection Grade	IP20					
Mechanical Dimension	88 x 54 x 25 mm					
Packaging Dimension	106 x 59 x 36 mm					
Weight	74 g					



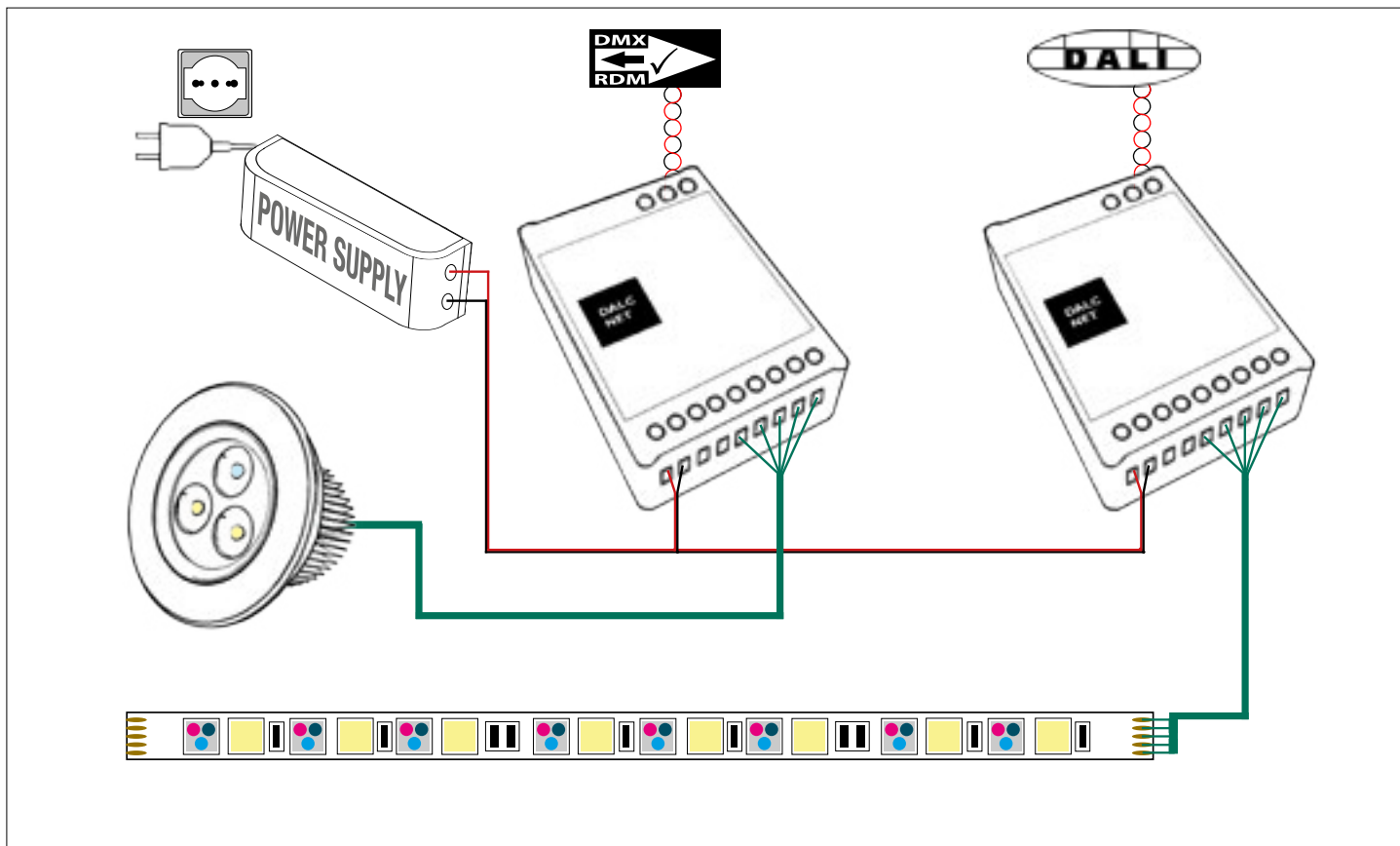


FEATURES DLX MULTI-CHANNEL
BUS+SEQUENCER+FADER+DIMMER+DRIVER
DC Input 12-24 Vdc
Command: DMX512-RDM, DALI or stand alone function
Control: RGB or RGBW color control
Current outputs or voltage outputs for R loads
Typical efficiency > 95%
Adjusting the brightness up to completed off
Soft start and soft stop
Optimized output curve
100% functional test - 5 years warranty



CODE	CV / CC	Protection	Supply Voltage	Output	Channels	Command
DLX1224-4CV-DALI	CV	IP20	12-24V DC	4 x 5A (10A total)	4	DALI
DLX1224-4CV-DMX	CV	IP20	12-24V DC	4 x 5A (10A total)	4	DMX
DLX1224-4CC350-DALI	CC	IP20	12-24V DC	4 x 350mA	4	DALI
DLX1224-4CC350-DMX	CC	IP20	12-24V DC	4 x 350mA	4	DMX
DLX1224-4CC500-DALI	CC	IP20	12-24V DC	4 x 500mA	4	DALI
DLX1224-4CC500-DMX	CC	IP20	12-24V DC	4 x 500mA	4	DMX
DLX1224-4CV-DALI-IP54	CV	IP54	12-24V DC	4 x 5A (10A total)	4	DALI
DLX1224-4CV-DMX-IP54	CV	IP54	12-24V DC	4 x 5A (10A total)	4	DMX
DLX1224-4CC350-DALI-IP54	CC	IP54	12-24V DC	4 x 350mA	4	DALI
DLX1224-4CC350-DMX-IP54	CC	IP54	12-24V DC	4 x 350mA	4	DMX
DLX1224-4CC500-DALI-IP54	CC	IP54	12-24V DC	4 x 500mA	4	DALI
DLX1224-4CC500-DMX-IP54	CC	IP54	12-24V DC	4 x 500mA	4	DMX





DLX MULTI CHANNEL DALI or DMX						
	12-24V DC					
	Constant Voltage		Constant Current			
Output Current	5 A / ch		350 mA / ch		500 mA / ch	
Output Current Total	10 A total		1 ch	4 ch	1 ch	4 ch
Nominal Power 12V	60 W / ch	120 W	4,2 W / ch	16,8 W	6 W / ch	24 W
Nominal Power 24V	120 W / ch	240 W	8,4 W / ch	33,6 W	12 W / ch	48 W
Supply Voltage	min: 10.8 Vdc - max: 26.4 Vdc					
D-PWM Dimming Frequency	300 Hz					
Ambient Temperature	min: -10 C° max: +40 C°					
Protection Grade	IP20 / IP54					
Mechanical Dimension	88 x 54 x 25 mm					
Packaging Dimension	106 x 59 x 36 mm					
Weight	74 g					





**FEATURES DLA SINGLE-CHANNEL**

BOOSTER

DC Input: 12-24V DC or 12-48V DC

Command: D-PWM

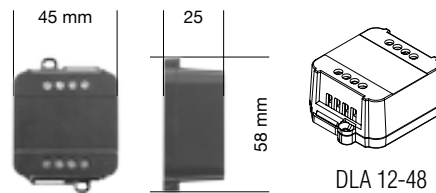
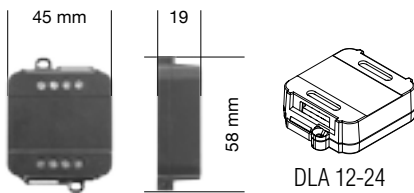
D-PWM Signal Amplifier

Current or voltage outputs for R loads or R-L-C loads

Typical efficiency &gt; 95%

Adjusting the brightness up to completed off

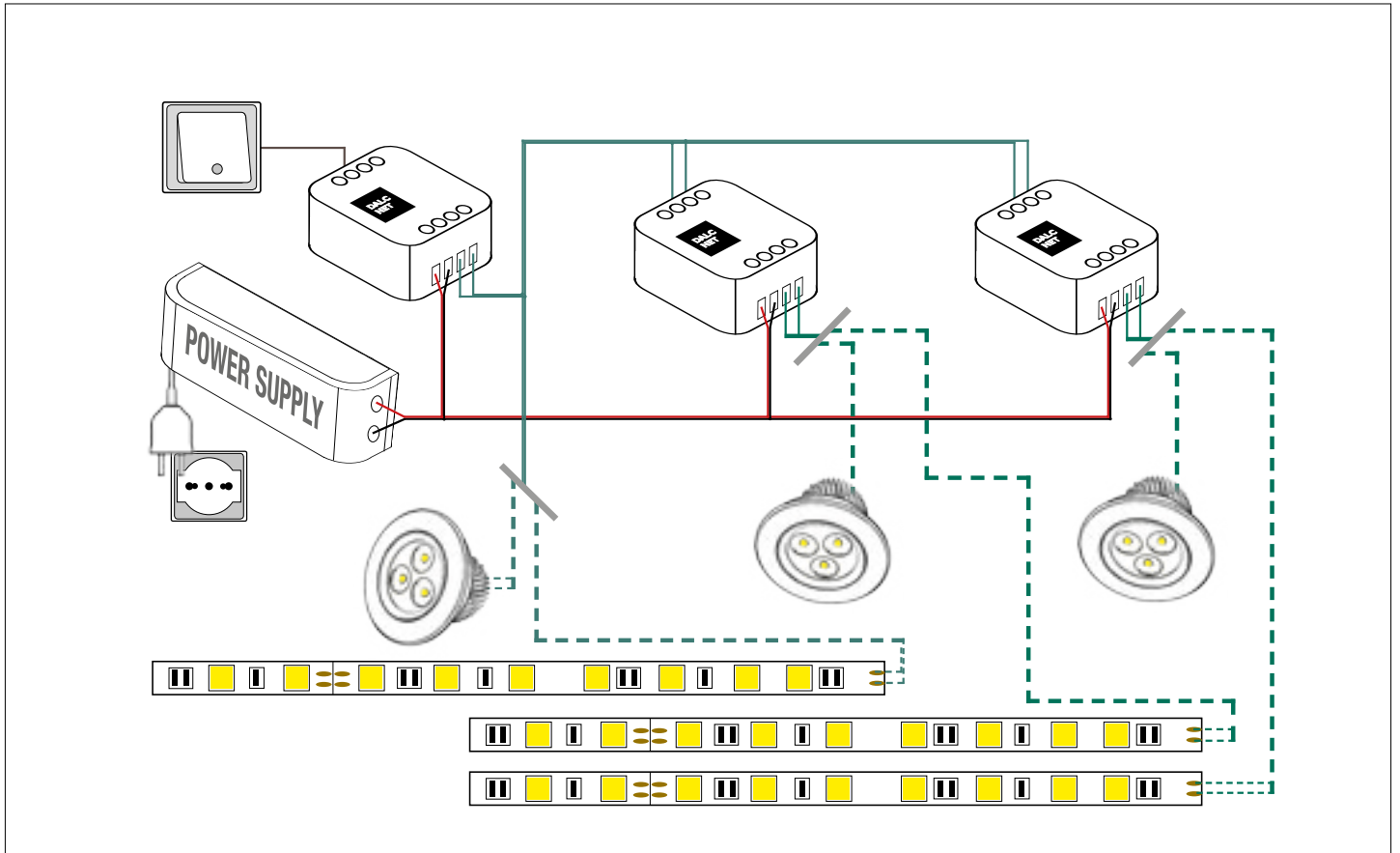
100% functional test - 5 years warranty



CODE	CV / CC	Supply Voltage	Output	Channels	Command
<b>DLA1224-1CV</b>	CV	12-24V DC	1 x 10A	1	D-PWM
<b>DLA1248-1CV</b>	CV	12-48V DC	1 x 6,5A	1	D-PWM
<b>DLA1248-1CC350</b>	CC	12-48V DC	1 x 350mA	1	D-PWM
<b>DLA1248-1CC500</b>	CC	12-48V DC	1 x 500mA	1	D-PWM
<b>DLA1248-1CC700</b>	CC	12-48V DC	1 x 700mA	1	D-PWM
<b>DLA1248-1CC950</b>	CC	12-48V DC	1 x 950mA	1	D-PWM





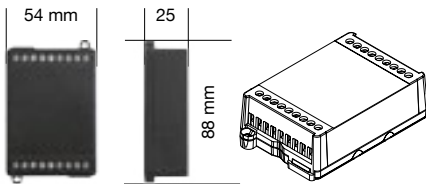


DLA SINGLE CHANNEL							
	12-24V DC		12-48V DC				
	Constant Voltage		Constant Voltage	Constant Current			
Output Current	10 A		6,5 A	350 mA	500 mA	700 mA	950 mA
Nominal Power 12V	120 W		78 W	4.2 W	6 W	8.4 W	11.4 W
Nominal Power 24V	240 W		156 W	8.4 W	12 W	16.8 W	22.8 W
Nominal Power 48V	-		312 W	16.8 W	24 W	33.6 W	45.6 W
Supply Voltage	min: 10.8 Vdc - max: 26.4 Vdc		min: 10.8 Vdc - max: 52.8 Vdc				
D-PWM Dimming Frequency	Fin		Fin				
Ambient Temperature	min: -10 C° max: +40 C°		min: -10 C° max: +40 C°				
Protection Grade	IP20		IP20				
Mechanical Dimension	45 x 58 x 19 mm		45 x 58 x 25 mm				
Packaging Dimension	68 x 56 x 35 mm		68 x 56 x 35 mm				
Weight	37 g		43 g				

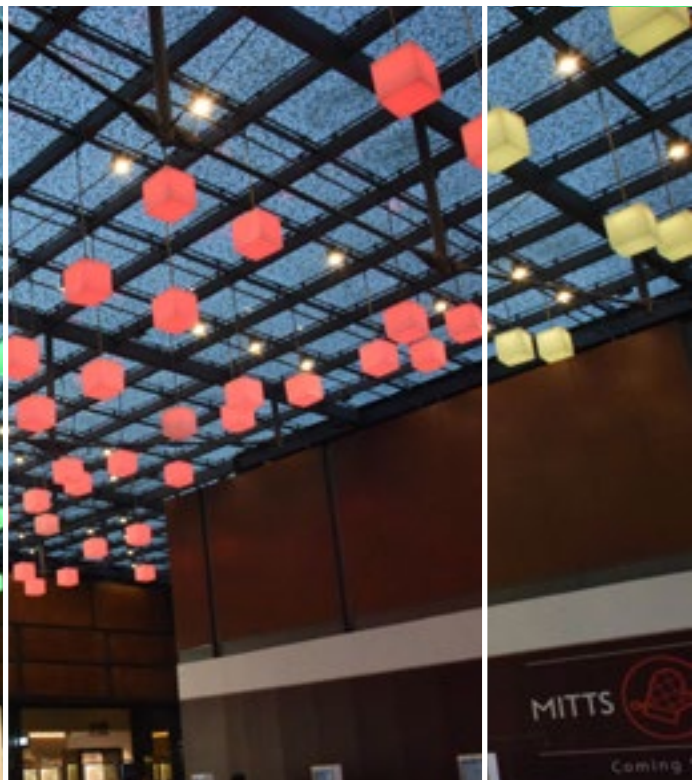


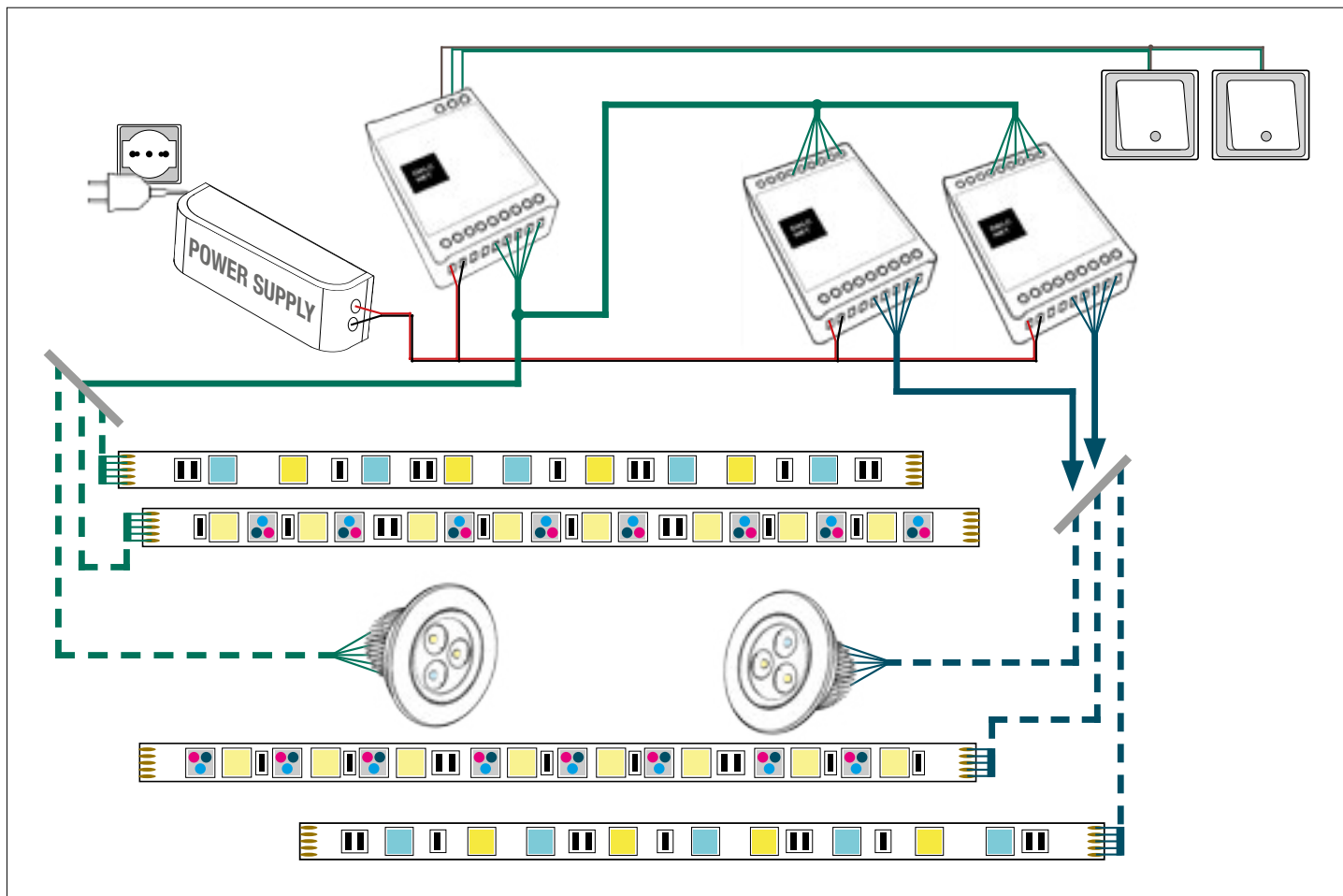


FEATURES DLA MULTI-CHANNEL
BOOSTER with 4 channels
DC Input: 12-24 Vdc
Command: D-PWM
D-PWM Signal Amplifier
LED Strip White, Tunable White, RGB or RGBW
Current outputs or voltage outputs for R loads
Typical efficiency > 95%
Adjusting the brightness up to completed off
100% functional test - 5 years warranty



CODE	CV / CC	Supply Voltage	Output	Channels	Command
DLA1224-4CV	CV	12-24V DC	4 x 5A (10A total)	4	D-PWM
DLA1224-4CC350	CC	12-24V DC	4 x 350mA	4	D-PWM
DLA1224-4CC500	CC	12-24V DC	4 x 500mA	4	D-PWM





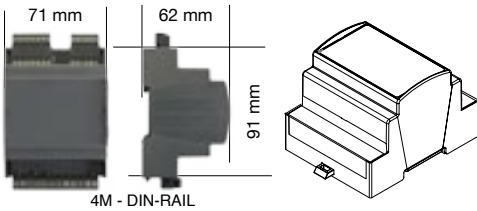
DLA MULTI CHANNEL						
	12-24V DC					
	Constant Voltage		Constant Current			
Output Current	5 A / ch		350 mA / ch		500 mA / ch	
Output Current Total	10 A total		1 ch	4 ch	1 ch	4 ch
Nominal Power 12V	60 W / ch	120 W	4,2 W / ch	16,8 W	6 W / ch	24 W
Nominal Power 24V	120 W / ch	240 W	8,4 W / ch	33,6 W	12 W / ch	48 W
Supply Voltage	min: 10.8 Vdc - max: 26.4 Vdc					
D-PWM Dimming Frequency	Fin					
Ambient Temperature	min: -10 C° max: +40 C°					
Protection Grade	IP20					
Mechanical Dimension	88 x 54 x 25 mm					
Packaging Dimension	106 x 59 x 36 mm					
Weight	80 g					





**FEATURES DLP - 4 CHANNELS**

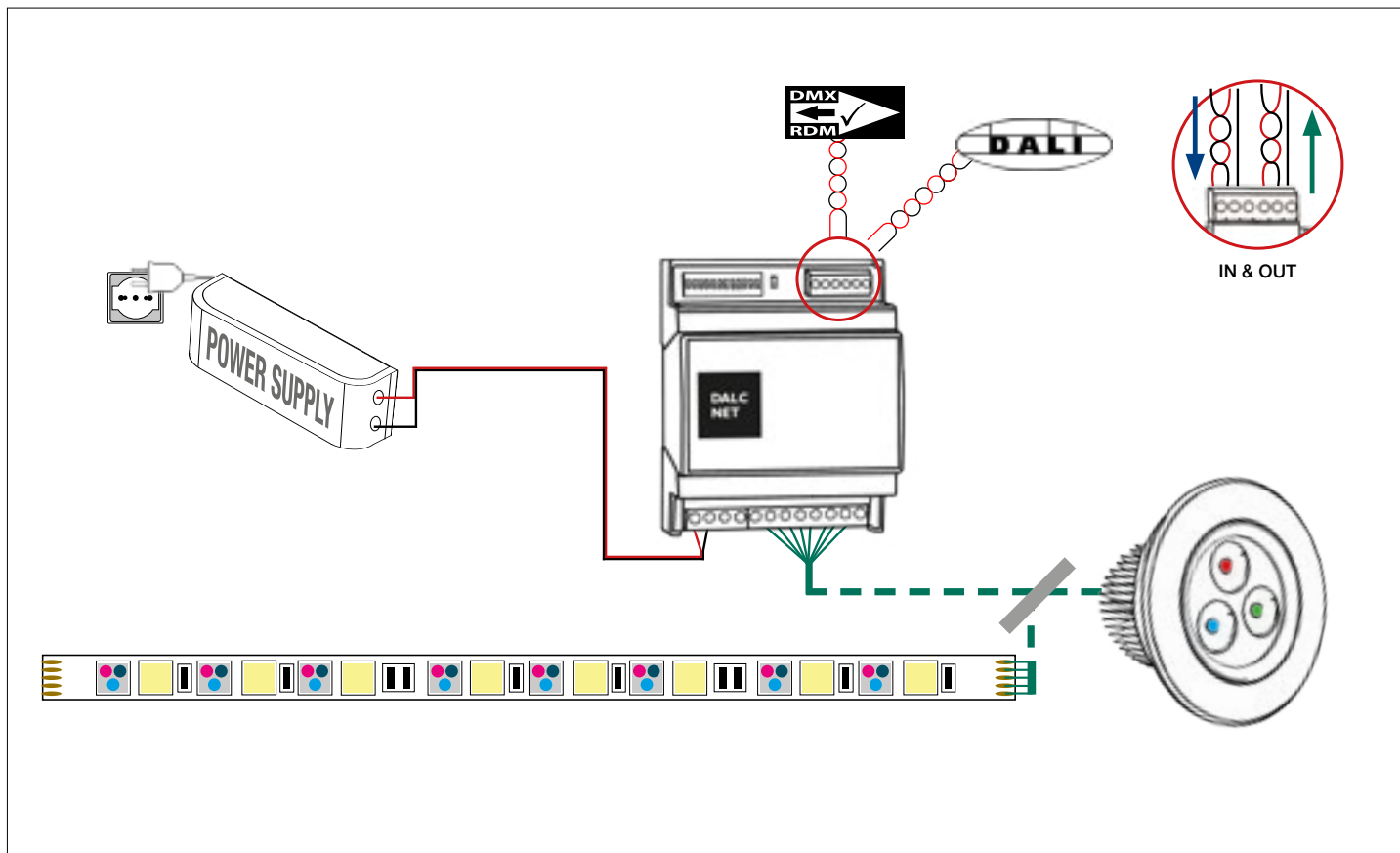
BUS+DIMMER+FADER+DRIVER
DC Input: 12-24 Vdc
BUS Command: DALI or DMX512-RDM
Isolated BUS Input
Control: White, Tunable white, RGB or RGBW
Address defined by BUS or DIP Switch
BUS IN and BUS OUT for an easy BUS cabling
Voltage Outputs for R loads
Adjusting the brightness up to completed off
Extended temperature range min -40°C max +60°C
Typical efficiency > 95%
100% functional test - 5 years warranty



CODE	CV / CC	Supply Voltage	Output	Channels	Command
<b>DLP1224-4CV-DALI</b>	CV	12-24V DC	4 x 5A - max 20A	4	DALI
<b>DLP1224-4CV-DMX</b>	CV	12-24V DC	4 x 5A - max 20A	4	DMX
<b>DLP1224-4CV-DMX-RJ45</b>	CV	12-24V DC	4 x 5A - max 20A	4	DMX - RJ45 Connector
<b>DLP1224-6CV-DALI</b>	CV	12-24V DC	6 x 5A - max 20A	6	DALI
<b>DLP1224-6CV-DMX</b>	CV	12-24V DC	6 x 5A - max 20A	6	DMX
<b>DLP1224-6CV-DMX-RJ45</b>	CV	12-24V DC	6 x 5A - max 20A	6	DMX - RJ45 Connector







DLP 4 CHANNEL	
	<b>12-24V DC</b>
Channel	<b>4 / 6</b>
	<b>Constant Voltage</b>
Output Current	5 A / ch
Output Current Total	20 A max
Nominal Power 12V	60 W /ch                      240 W max
Nominal Power 24V	120 W /ch                      480 W max
Supply Voltage	min: 10.8 Vdc - max: 26.4 Vdc
D-PWM Dimming Frequency	600 Hz
Ambient Temperature	min: -40 C° max: +60 C°
Protection Grade	IP10
Mechanical Dimension	71 x 91 x 62 mm - DIN RAIL 4mod.
Packaging Dimension	124 x 85 x 71 mm
Weight	125 g





**FEATURES DLD 1CH PRO**

DIMMER+FADER+DRIVER

DC Input: 12-24-48 Vdc

Local Command: N.O. Push-button / 0-10V / 1-10V / Potentiometer

White Control

Voltage outputs for R-L-C loads

Adjusting the brightness up to completed off

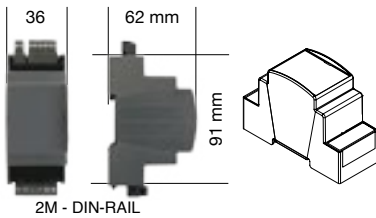
Soft start and soft stop

Optimized output curve

Typical efficiency &gt; 95%

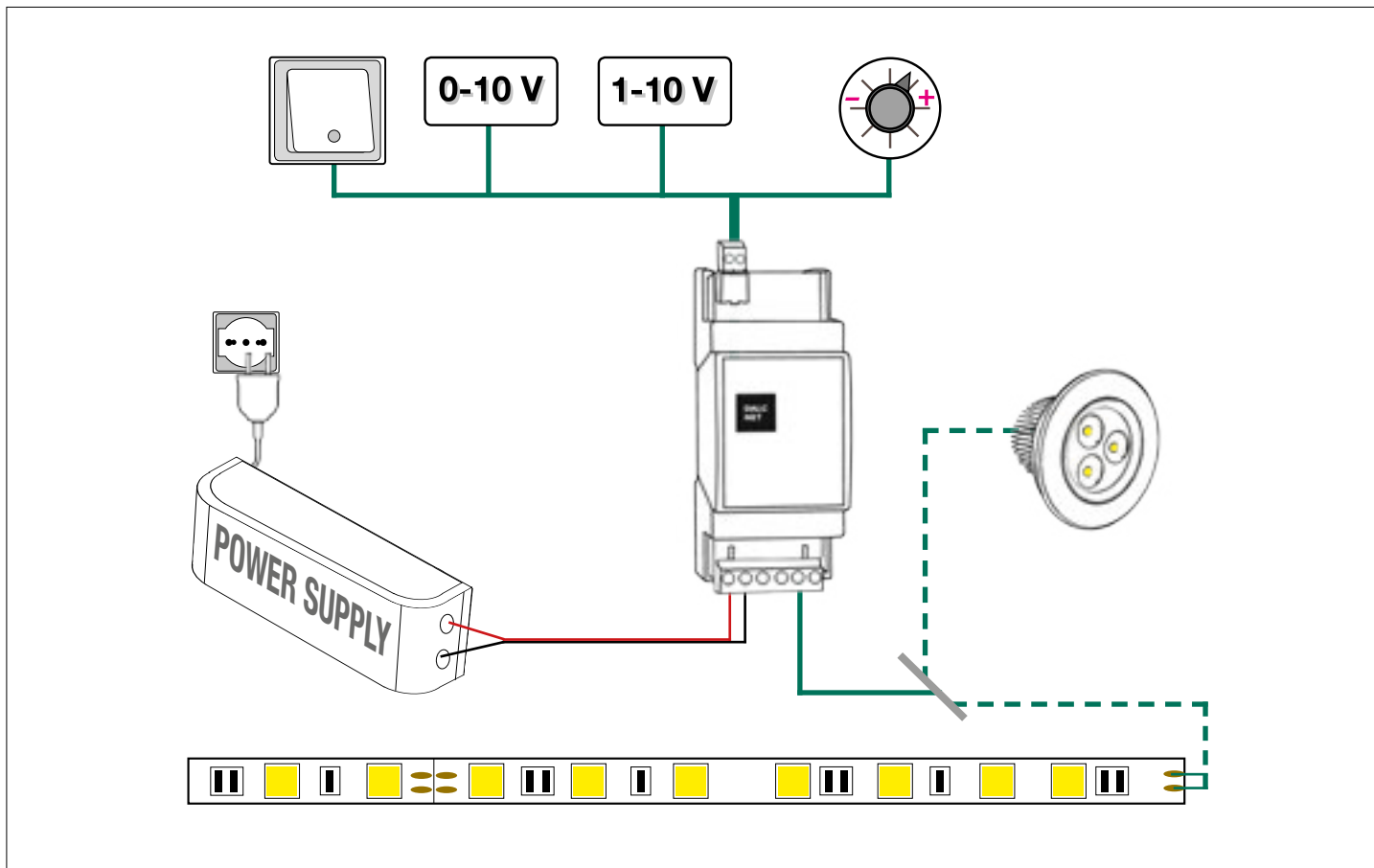
Extended temperature range min -40°C max +60°C

100% functional test - 5 years warranty

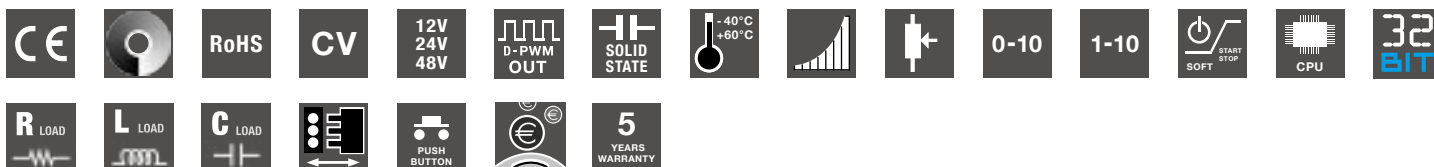


CODE	CV / CC	Supply Voltage	Output	Channels	Command
<b>DLD1248-1CV</b>	CV	12-48V DC	1 x 8A	1	N.O. Push button 0-10V / 1-10V Potentiometer



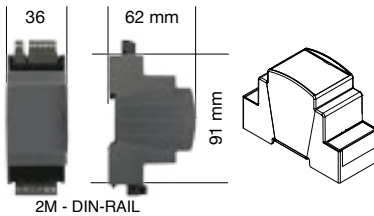


DLD 1 CHANNEL	
	<b>12-48V DC</b>
	<b>Constant Voltage</b>
Output Current	8 A
Nominal Power 12V	78 W
Nominal Power 24V	156 W
Nominal Power 48V	312 W
Supply Voltage	min: 10.8 Vdc - max: 52.8 Vdc
D-PWM Dimming Frequency	300 / 600 / 1200 Hz
Ambient Temperature	min: -40 C° max: +60 C°
Protection Grade	IP10
Mechanical Dimension	36 x 91 x 62 mm - DIN RAIL 2 mod.
Packaging Dimension	124 x 71 x 48 mm
Weight	88 g



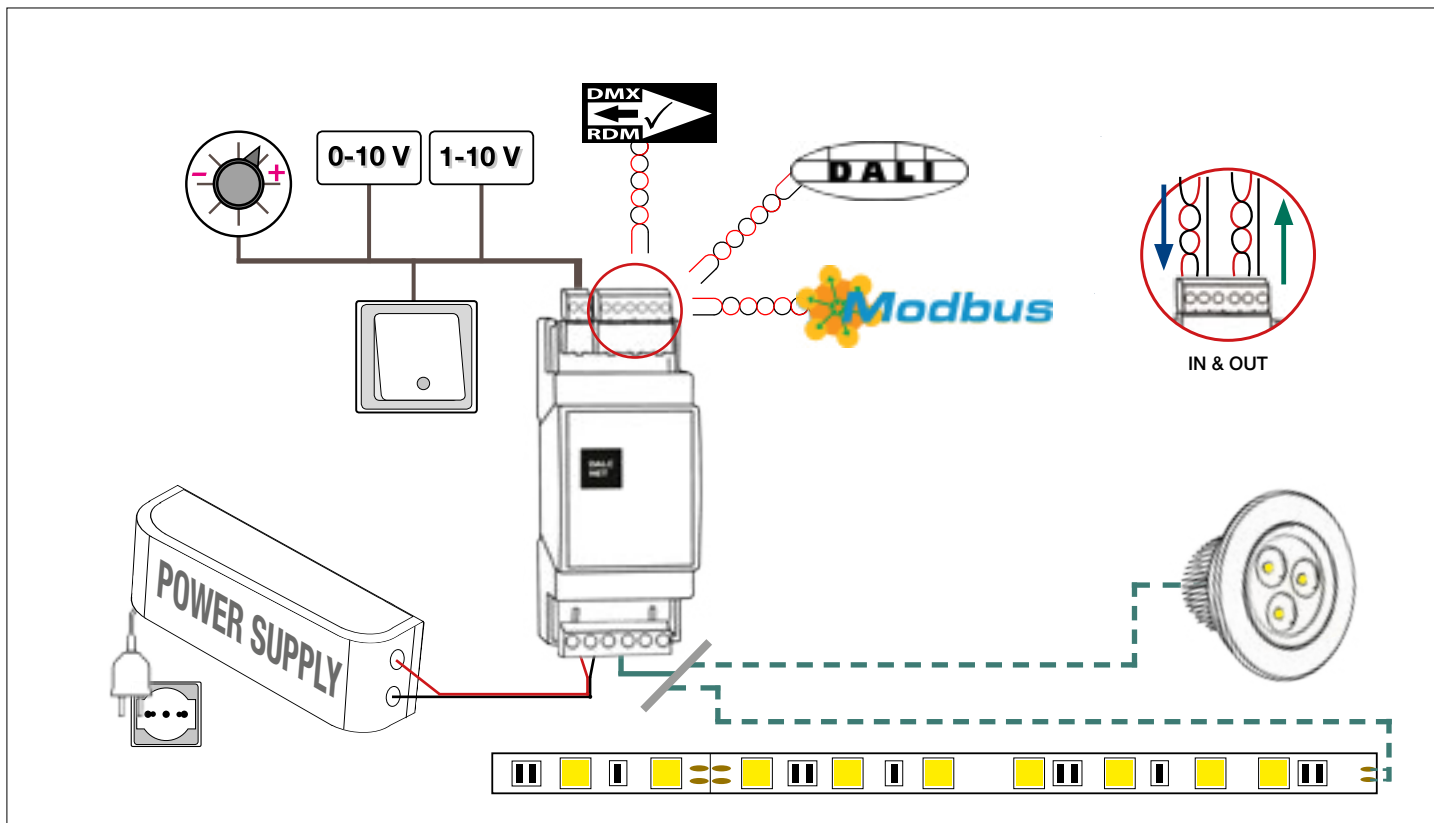


FEATURES DLD 1CH PRO BUS
BUS+DIMMER+FADER+DRIVER
DC Input: 12-24-48 Vdc
BUS Command: DMX512-RDM / DALI / MODBUS
Local Command: N.O. Push-button / 0-10V / 1-10V / Potentiometer
Voltage outputs for R-L-C loads
Adjusting the brightness of white light
Adjusting the brightness up to completed off
Soft start and soft stop
Optimized output curve
Analogic IN → DMX OUT
MASTER & SLAVE function on DMX version
Typical efficiency > 95%
Extended temperature range min -40°C max +60°C
100% functional test - 5 years warranty

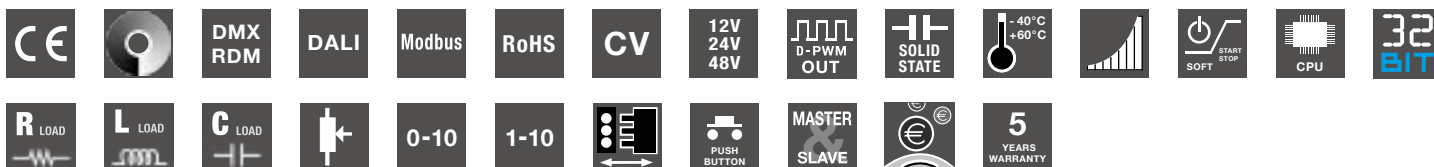


CODE	CV / CC	Supply Voltage	Output	Channels	Command
<b>DLD1248-1CV-DALI</b>	CV	12-48V DC	1 x 8A	1	DALI N.O. Push button 0-10V / 1-10V / Potentiometer
<b>DLD1248-1CV-DMX</b>	CV	12-48V DC	1 x 8A	1	DMX N.O. Push button 0-10V / 1-10V / Potentiometer
<b>DLD1248-1CV-MODBUS</b>	CV	12-48V DC	1 x 8A	1	MODBUS RTU N.O. Push button 0-10V / 1-10V / Potentiometer



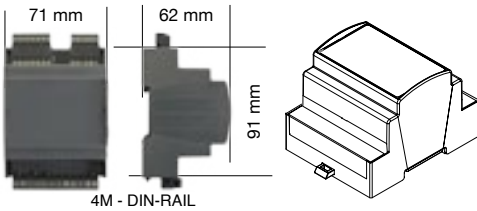


DL1 1 CHANNEL BUS	
	<b>12-48V DC</b>
	<b>Constant Voltage</b>
Output Current	8 A
Nominal Power 12V	78 W
Nominal Power 24V	156 W
Nominal Power 48V	312 W
Supply Voltage	min: 10.8 Vdc - max: 52.8 Vdc
D-PWM Dimming Frequency	300 / 600 / 1200 Hz
Ambient Temperature	min: -40 C° max: +60 C°
Protection Grade	IP10
Mechanical Dimension	36 x 91 x 62 mm - DIN RAIL 2 mod.
Packaging Dimension	124 x 71 x 48 mm
Weight	88 g





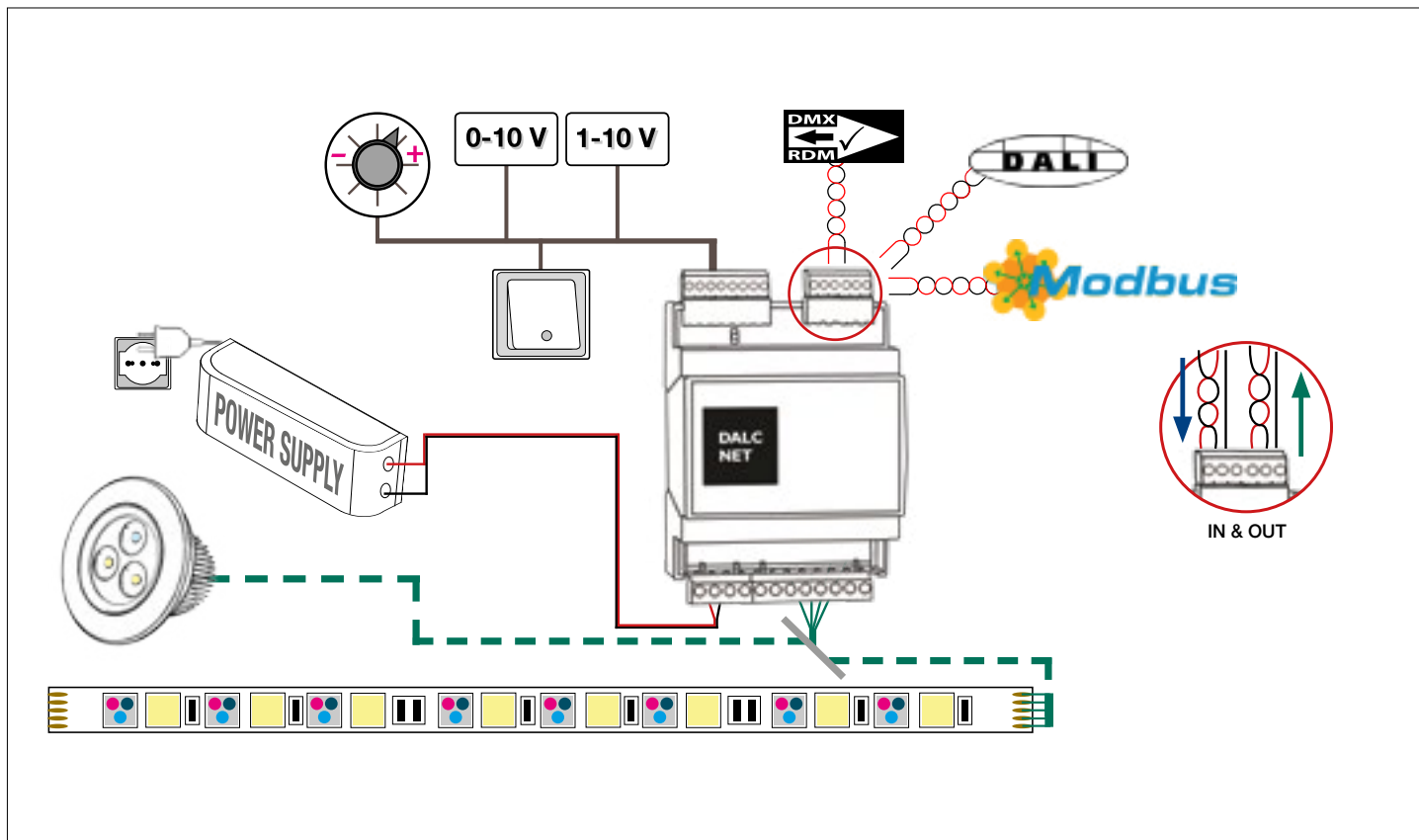
FEATURES DLD - 4 CHANNEL - PRO
BUS+SEQUENCER+FADER+DIMMER+DRIVER
DC Input 12-24-48 Vdc
BUS Command: DMX512-RDM, DALI, MODBUS
Local Command: N.O. Push button, 0-10V, 1-10V, Potentiometer
Controls: White, Tunable White, RGB o RGBW colour
Dim to Warm
Voltage outputs for R-L-C loads
Adjusting the brightness up to completed off
Soft start and soft stop
Optimized output curve
Analogic IN → DMX OUT
MASTER & SLAVE function on DMX version
Typical efficiency > 95%
Extended temperature range min -40°C max +60°C
100% functional test - 5 years warranty



CODE	CV / CC	Supply Voltage	Output	Channels	Command
<b>DLD1248-4CV-DALI</b>	CV	12-48V DC	4 x 5A - 1 x 20A	4	DALI 4 N.O. Push button 0-10V / 1-10V / Potentiometer
<b>DLD1248-4CV-DMX</b>	CV	12-48V DC	4 x 5A - 1 x 20A	4	DMX 4 N.O. Push button 0-10V / 1-10V / Potentiometer
<b>DLD1248-4CV-MODBUS</b>	CV	12-48V DC	4 x 5A - 1 x 20A	4	MODBUS RTU 4 N.O. Push button 0-10V / 1-10V / Potentiometer
<b>DLD1248-4CC-DALI</b>	CC	12-48V DC	4 x 700mA 1 x 2,8A	4	DALI 4 N.O. Push button 0-10V / 1-10V / Potentiometer
<b>DLD1248-4CC-DMX</b>	CC	12-48V DC	4 x 700mA 1 x 2,8A	4	DMX 4 N.O. Push button 0-10V / 1-10V / Potentiometer
<b>DLD1248-4CC-MODBUS</b>	CC	12-48V DC	4 x 700mA 1 x 2,8A	4	MODBUS RTU 4 N.O. Push button 0-10V / 1-10V / Potentiometer

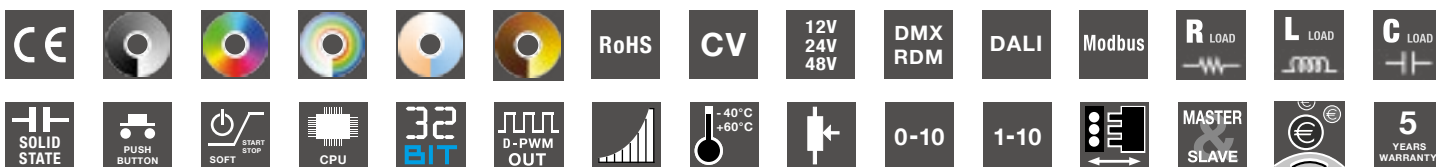






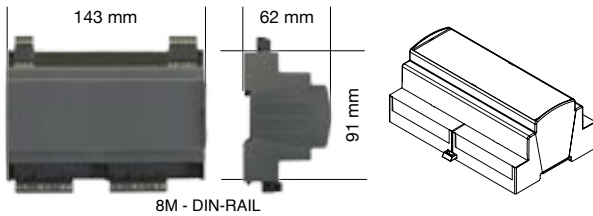
DLD 4 CHANNEL						
12-48V DC - 4 Channels						
	Constant Voltage		Constant Current *			
Output Current	5 A / ch		250 mA / ch		700 mA / ch	
Output Current Total	20 A total		1 ch	4 ch	1 ch	4 ch
Nominal Power 12V	60 W /ch	240 W	3 W /ch	12 W	8,4 W /ch	33,6 W
Nominal Power 24V	120 W /ch	480 W	6 W /ch	24 W	16,8 W /ch	67,2 W
Nominal Power 48V	240 W /ch	960 W	12 W /ch	48 W	33,6 W /ch	134,4 W
Supply Voltage	min: 10.8 Vdc - max: 52.8 Vdc					
D-PWM Dimming Frequency	300 / 600 / 1200 Hz					
Ambient Temperature	min: -40 C° max: +60 C°					
Protection Grade	IP10					
Mechanical Dimension	71 x 91 x 62 mm - DIN RAIL 4 mod.					
Packaging Dimension	124 x 85 x 71 mm					
Weight	125 g					

\* Settable output current range from 250mA to 700mA on step of 50mA.



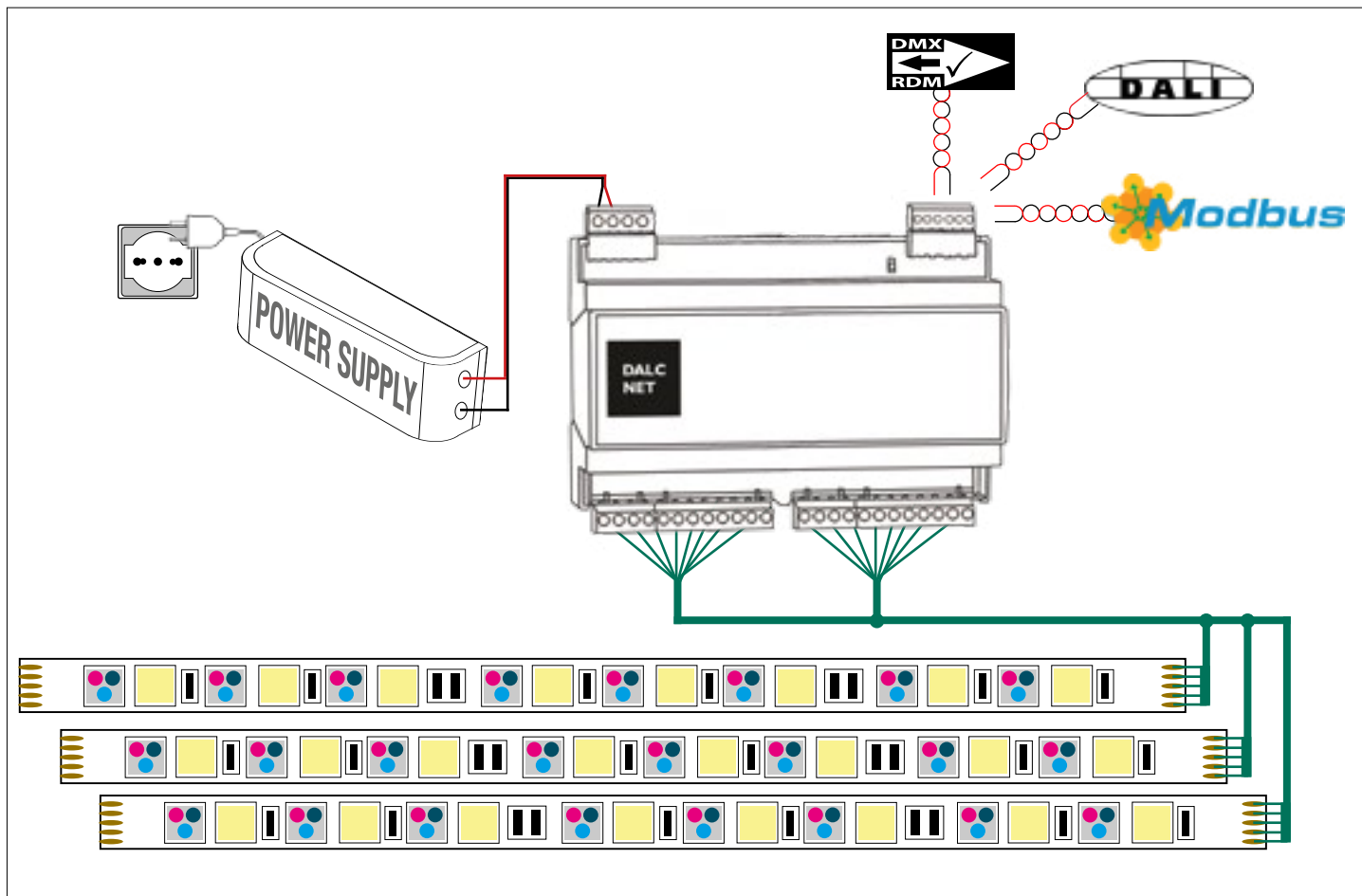


FEATURES DLD - 12 CHANNEL - PRO
BUS+SEQUENCER+FADER+DIMMER+DRIVER
DC Input 12-24-48 Vdc
BUS Command: DMX512-RDM, DALI, MODBUS
Controls: white, tunable white, RGB o RGBW colour
Dim to Warm
Voltage outputs for R-L-C loads
Adjusting the brightness up to completed off
Soft start and soft stop
Optimized output curve
Typical efficiency> 95%
Extended temperature range min -40°C max +60°C
100% functional test - 5 years warranty

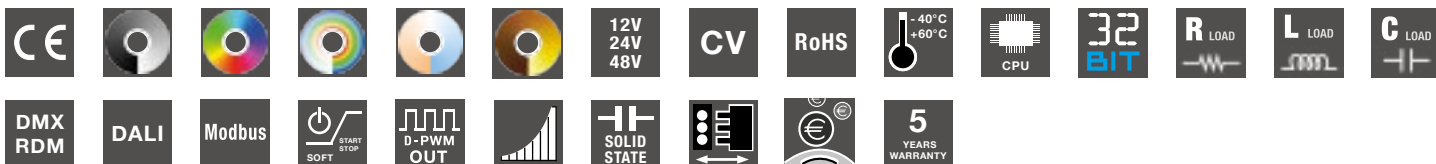


CODE	CV / CC	Supply Voltage	Output	Channels	Command
<b>DLD1248-12CV-DALI</b>	CV	12-48V DC	12 x 2A max - Tot. 20A max	12	DALI
<b>DLD1248-12CV-DMX</b>	CV	12-48V DC	12 x 2A max - Tot. 20A max	12	DMX
<b>DLD1248-12CV-MODBUS</b>	CV	12-48V DC	12 x 2A max - Tot. 20A max	12	MODBUS RTU



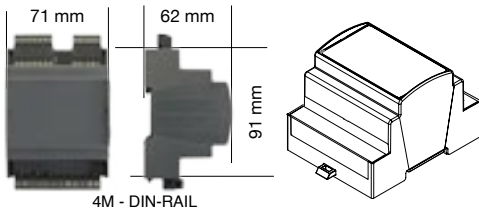


DLD 12 CHANNEL		
	12-48V DC - 12 Channels	
	Constant Voltage	
Output Current	2 A / ch	
Output Current Total	20 A total	
Nominal Power 12V	24 W / ch	240 W
Nominal Power 24V	48 W /ch	480 W
Nominal Power 48V	96 W /ch	960 W
Supply Voltage	min: 10.8 Vdc - max: 52.8 Vdc	
D-PWM Dimming Frequency	300 / 600 / 1200 Hz	
Ambient Temperature	min: -40 C° max: +60 C°	
Protection Grade	IP10	
Mechanical Dimension	143 x 91 x 62 mm - DIN RAIL 8 mod.	
Packaging Dimension	164 x 124 x 71 mm	
Weight	205 g	



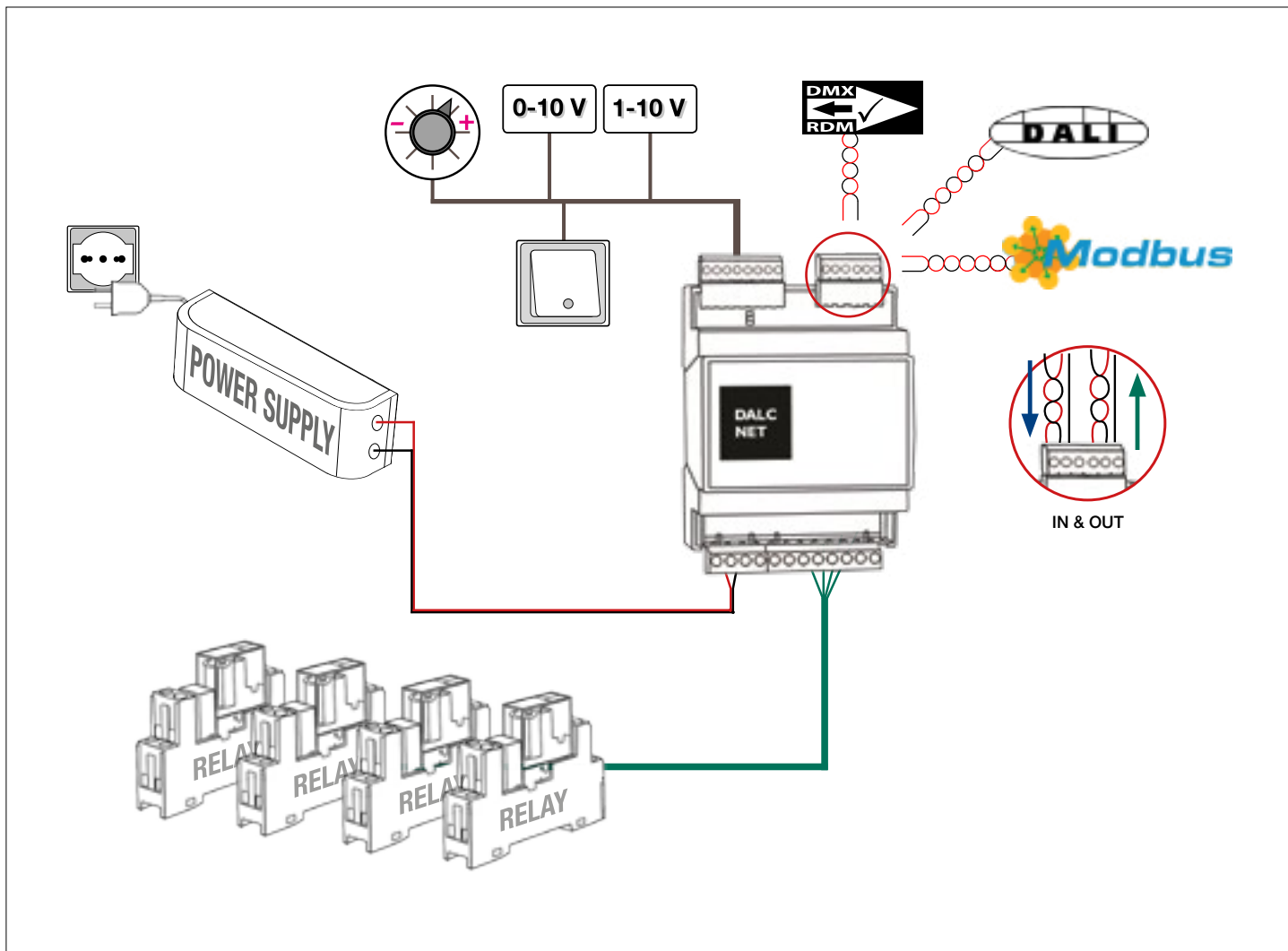


FEATURES DLD - 4 CHANNEL RELAY - PRO
BUS+RELAY DRIVER
DC Input 12-24-48 Vdc
BUS Command: DMX512-RDM, DALI, MODBUS
Local Command: N.O. Push-button, 0-10V, 1-10V, Potentiometer
Controls: ON / OFF
4 DIGITAL Output / RELAY DRIVER
Analogic IN → OUT DMX
MASTER & SLAVE function
Extended temperature range min -40°C max +60°C
100% functional test - 5 years warranty



CODE	Supply Voltage	Output	Channels	Command
<b>DLD1248-4RL-DALI</b>	12-48V DC	4 x DIGITAL OUT	4	DALI 4 N.O. Push button 0-10V / 1-10V / Potentiometer
<b>DLD1248-4RL-DMX</b>	12-48V DC	4 x DIGITAL OUT	4	DMX 4 N.O. Push button 0-10V / 1-10V / Potentiometer
<b>DLD1248-4RL-MODBUS</b>	12-48V DC	4 x DIGITAL OUT	4	MODBUS RTU 4 N.O. Push button 0-10V / 1-10V / Potentiometer





### DLD 4 CHANNEL RELAY

	12-48V DC - 4 Channels
	DIGITAL
Output	Digital Output
Output Voltage	=Vin
Output Current	max 500 mA / ch
Supply Voltage	DC min: 10.8 Vdc - max: 52.8 Vdc
Ambient Temperature	min: -40 C° max: +60 C°
Protection Grade	IP10
Mechanical Dimension	71 x 91 x 62 mm - DIN RAIL 4 mod.
Packaging Dimension	124 x 85 x 71 mm
Weight	125 g





BLE  
SMART

BlueDimmer.com

www.bluedimmer.com



## FEATURES DLB 1 CH BLE

DIMMER+FADER+BLE DRIVER

DC Input: 12-24-48 Vdc

Remote Command : Bluetooth Low Energy (**Bluedimmer App**)

Local Command: N.O. Push Buttons

Current or Voltage outputs for R loads or R-L-C loads

Adjusting the brightness of white light

Adjusting the brightness up to completed off

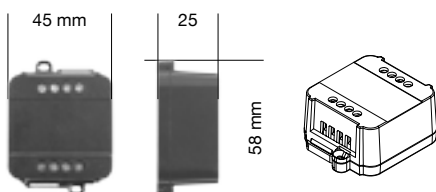
Soft start and soft stop

Optimized output curve

Device with Memory function

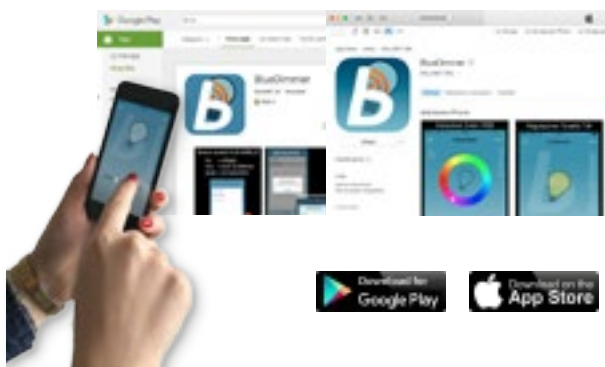
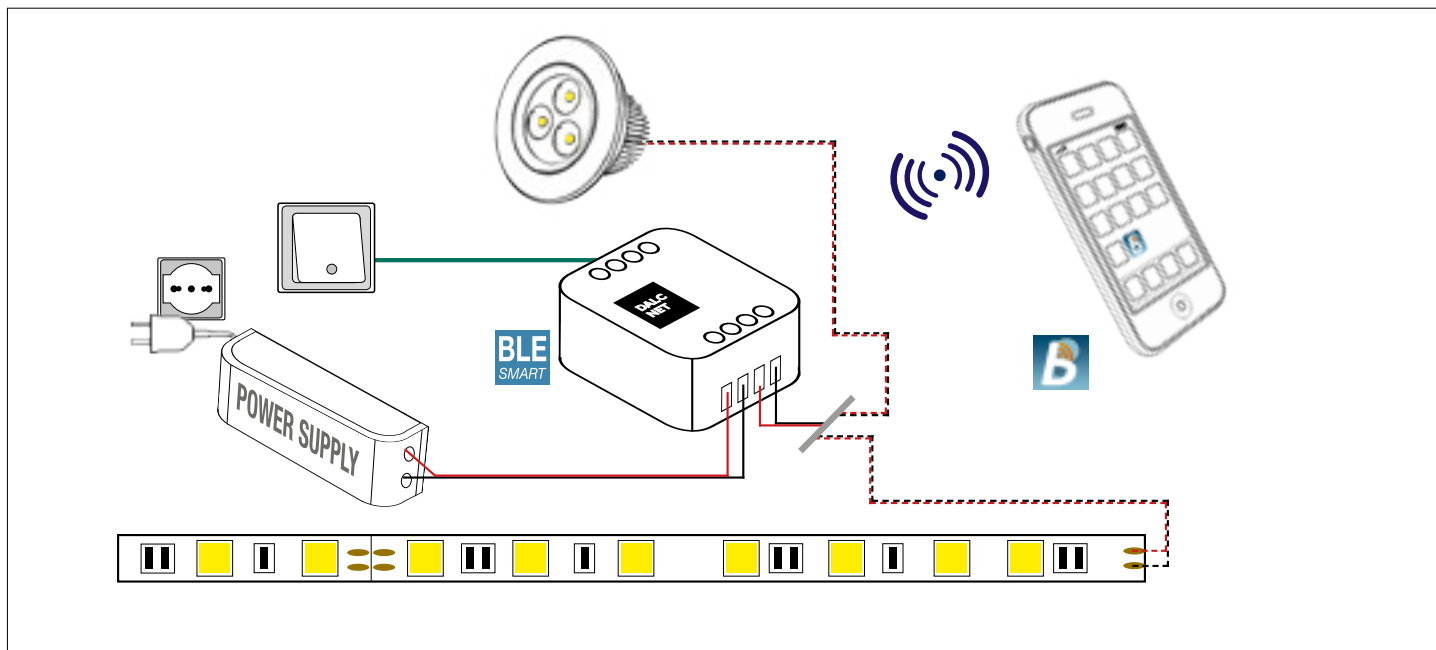
Typical efficiency &gt; 95%

100% functional test - 5 years warranty

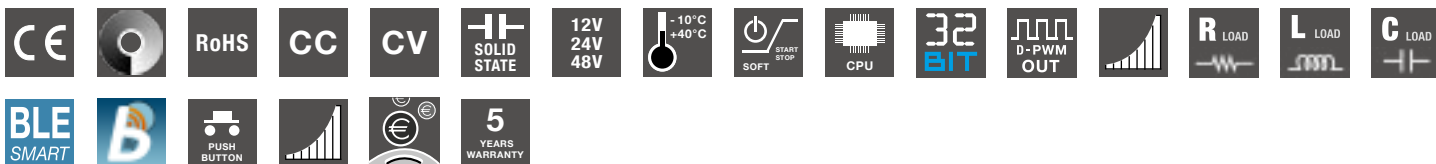


CODE	CV / CC	Supply Voltage	Output	Channels	Command
DLB1224-1CV-BLE	CV	12-24V DC	1 x 10A	1	BLE - N.O. Push buttons
DLB1248-1CV-BLE	CV	12-48V DC	1 x 6,5A	1	BLE - N.O. Push buttons
DLB1248-1CC350-BLE	CC	12-48V DC	1 x 350mA	1	BLE - N.O. Push buttons
DLB1248-1CC500-BLE	CC	12-48V DC	1 x 500mA	1	BLE - N.O. Push buttons
DLB1248-1CC700-BLE	CC	12-48V DC	1 x 700mA	1	BLE - N.O. Push buttons
DLB1248-1CC950-BLE	CC	12-48V DC	1 x 950mA	1	BLE - N.O. Push buttons





DLB SINGLE CHANNEL BLUEDIMMER							
	12-24V DC		12-48V DC				
	Constant Voltage		Constant Voltage	Constant Current			
Output Current	10 A		6,5 A	350 mA	500 mA	700 mA	950 mA
Nominal Power 12V	120 W		78 W	4.2 W	6 W	8.4 W	11.4 W
Nominal Power 24V	240 W		156 W	8.4 W	12 W	16.8 W	22.8 W
Nominal Power 48V	-		312 W	16.8 W	24 W	33.6 W	45.6 W
Supply Voltage	min: 10.8 Vdc - max: 26.4 Vdc		min: 10.8 Vdc - max: 52.8 Vdc				
D-PWM Dimming Frequency	300 Hz		300 Hz				
Ambient Temperature	min: -10 C° max: +40 C°		min: -10 C° max: +40 C°				
Protection Grade	IP20		IP20				
Mechanical Dimension	45 x 58 x 19 mm		45 x 58 x 25 mm				
Packaging Dimension	68 x 56 x 35 mm		68 x 56 x 35 mm				
Weight	40 g		40 g				





BLE  
SMART

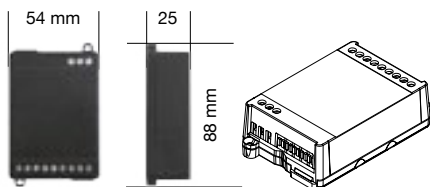
BlueDimmer.com

www.bluedimmer.com



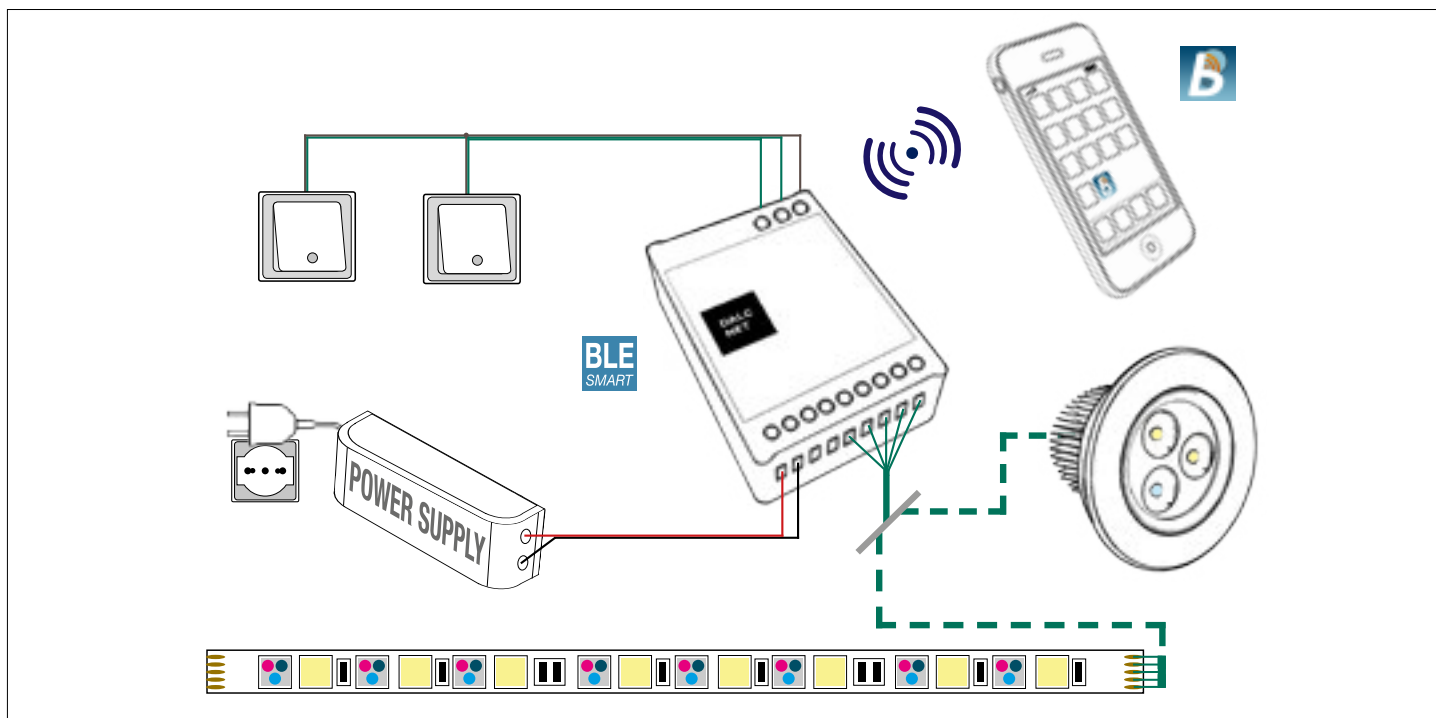
FEATURES DLX 4CH BLE
SEQUENCER+FADER+DIMMER+BLE DRIVER
DC Input 12-24 Vdc
Remote Command: Bluetooth Low Energy ( <b>Bluedimmer App</b> )
Local Command: n° 2 N.O. Push Buttons
Control: Dimmer, Tunable White, RGB or RGBW Color
Current outputs or voltage outputs for LED strip
Adjusting the brightness up to completed off
Soft start and soft stop
Optimized output curve
Device with Memory function
Typical efficiency > 95%
100% functional test - 5 years warranty

ONE CHANNEL		TUNABLE WHITE		RGB		RGBW	
-------------	--	---------------	--	-----	--	------	--

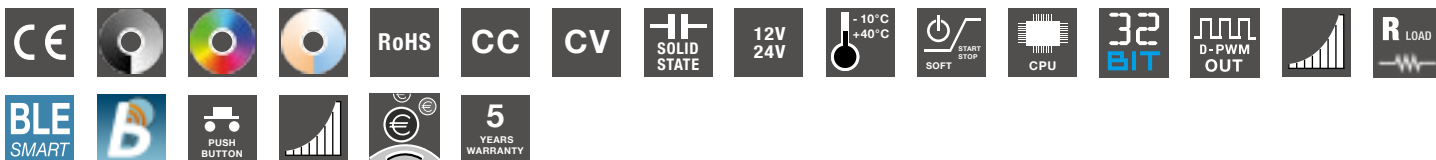


CODE	CV / CC	Supply Voltage	Output	Channels	Command
DLX1224-4CV-BLE	CV	12-24V DC	4 x 5A (10A total)	4	BLE - 2 N.O. Push buttons
DLX1224-4CC350-BLE	CC	12-24V DC	4 x 350mA	4	BLE - 2 N.O. Push buttons
DLX1224-4CC500-BLE	CC	12-24V DC	4 x 500mA	4	BLE - 2 N.O. Push buttons





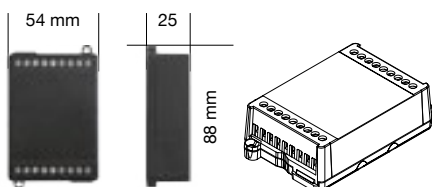
DLX 4 CHANNEL BLUEDIMMER						
12-24V DC						
	Constant Voltage		Constant Current			
Output Current	5 A / ch		350 mA /ch		500 mA /ch	
Output Current Total	10 A total		1,4 A total		2 A total	
Nominal Power 12V	60 W/ch	120 W	4,2 W /ch	16,8 W	6 W /ch	24 W
Nominal Power 24V	120 W/ch	240 W	8,4 W /ch	33,6 W	12 W /ch	48 W
Supply Voltage	min: 10.8 Vdc - max: 26.4 Vdc					
D-PWM Dimming Frequency	300 Hz					
Ambient Temperature	min: -10 C° max: +40 C°					
Protection Grade	IP20					
Mechanical Dimension	88 x 54 x 25 mm					
Packaging Dimension	106 x 59 x 36 mm					
Weight	74 g					







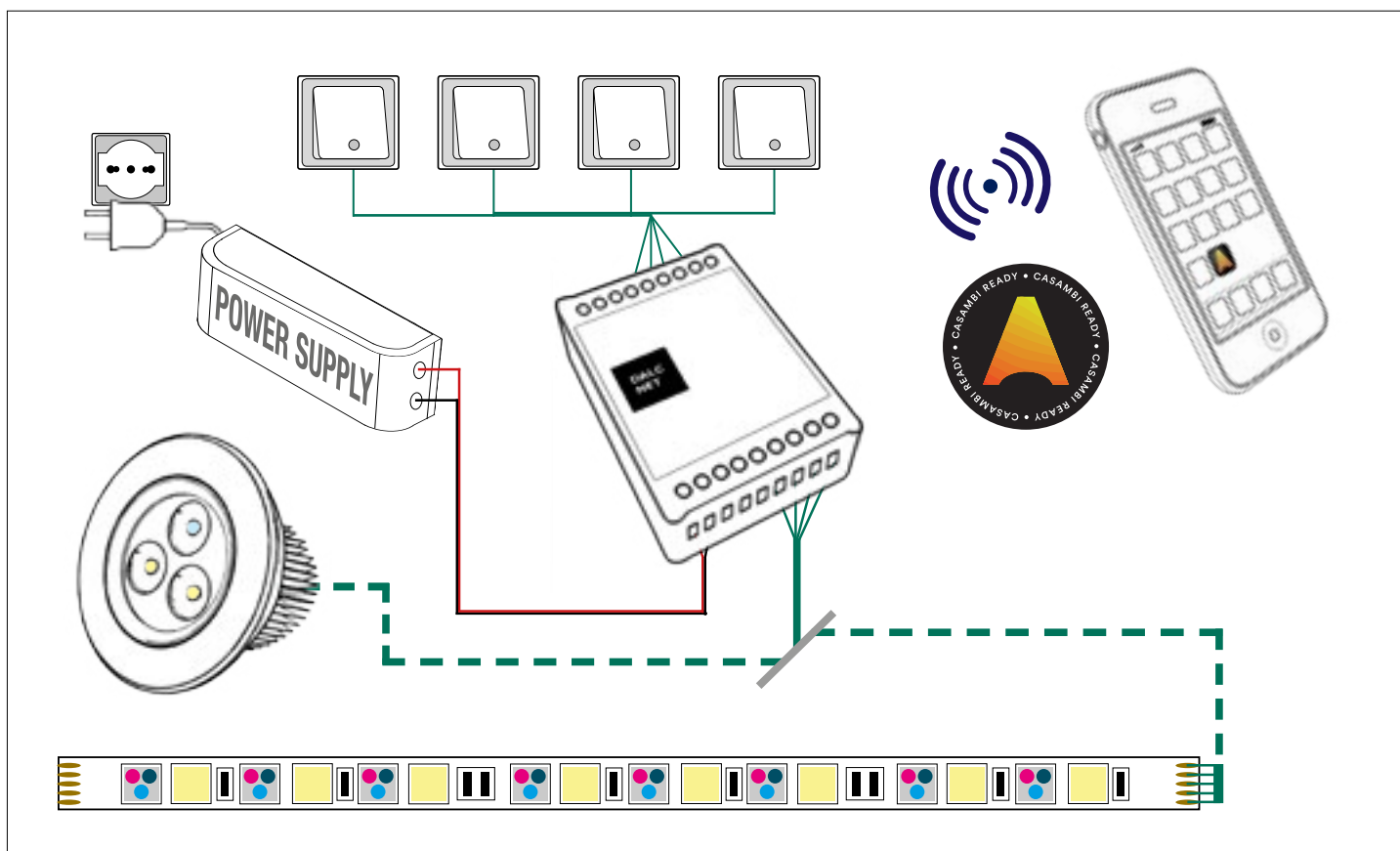
<b>FEATURES: DLX 4CH CASAMBI APP</b>
DIMMER+CASAMBI DRIVER
DC Input 12-24 Vdc
Remote Command: <b>CASAMBI App</b>
Local Command: 4 N.O. Push Buttons
Control: Dimmer, Tunable White, RGB or RGBW Color
Current outputs or voltage outputs for LED strip
Typical efficiency > 95%
100% functional test - 5 years warranty



CODE	CV / CC	Supply Voltage	Output	Channels	Command
<b>DLX1224-4CV-CASAMBI</b>	CV	12-24V DC	4 x 5A (10A total)	4	APP CASAMBI + 4 N.O. Push buttons
<b>DLX1224-4CC350-CASAMBI</b>	CC	12-24V DC	4 x 350mA	4	APP CASAMBI + 4 N.O. Push buttons
<b>DLX1224-4CC500-CASAMBI</b>	CC	12-24V DC	4 x 500mA	4	APP CASAMBI + 4 N.O. Push buttons







## DLX 4 CHANNEL CASAMBI

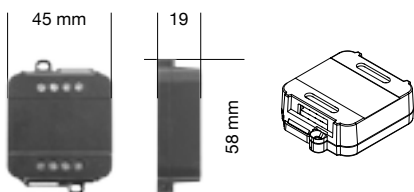
	12-24V DC					
	Constant Voltage		Constant Current			
Output Current	5 A / ch		350 mA /ch		500 mA /ch	
Output Current Total	10 A total		1,6 A total		2 A total	
Nominal Power 14V	60 W/ch	120 W	4,2 W /ch	16,8 W	6 W /ch	24 W
Nominal Power 24V	120 W/ch	240 W	8,4 W /ch	33,6 W	12 W /ch	48 W
Supply Voltage	min: 10.8 Vdc - max: 26.4 Vdc					
D-PWM Dimming Frequency	600 Hz					
Ambient Temperature	min: -10 C° max: +40 C°					
Protection Grade	IP20					
Mechanical Dimension	88 x 54 x 25 mm					
Packaging Dimension	106 x 59 x 36 mm					
Weight	80 g					



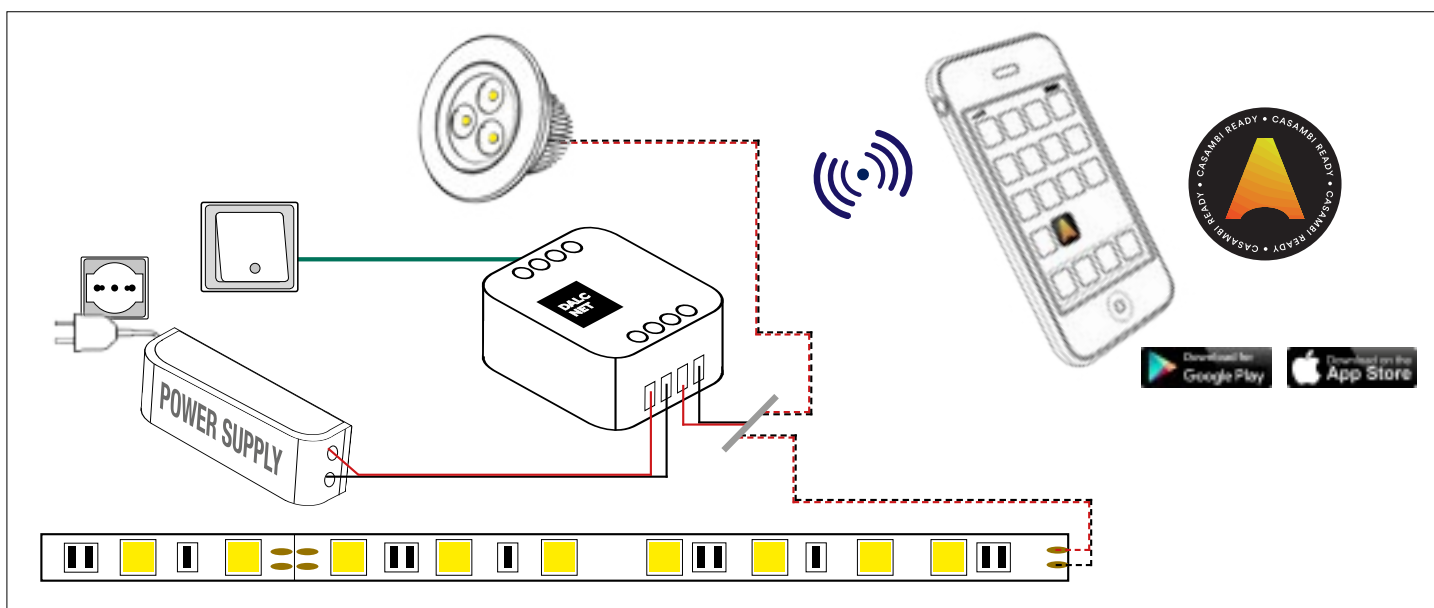


**FEATURES: DLC 1CH CASAMBI APP**

- DIMMER+CASAMBI DRIVER
- DC Input 12-24 Vdc
- Remote Command: **CASAMBI App**
- Local Command: 1 N.O. Push Buttons
- White Control
- Typical efficiency > 95%
- 100% functional test - 5 years warranty



CODE	CV / CC	Supply Voltage	Output	Channels	Command
DLC1224-1CV-CASAMBI	CV	12-24V DC	1 x 10A	1	APP CASAMBI - N.O. Push buttons



## TIMER-CASAMBI



The TIMER-CASAMBI is the device that allows to keep memory of Casambi clocks for scenarios when power supply is missing or in case of temporarily black-out. The programming and synchronizing settings are played again when power is restored. It has got an inside independent precision clock, with 24h working autonomy. Do not need any battery. The device has got a N.O. Input, to connect a push button or a sensor.

Il TIMER-CASAMBI è il dispositivo che permette di mantenere la memoria degli orologi per gli scenari Casambi in mancanza dell'alimentazione elettrica o black-out temporaneo. La programmazione e sincronizzazione vengono ristabilite al ritorno dell'alimentazione. Al suo interno è dotato di orologio di precisione indipendente con autonomia di almeno 24 ore, e non necessita di batteria. Il dispositivo inoltre è dotato di un ingresso (N.O.) per permetterne l'utilizzo tramite un pulsante o un sensore di presenza.

## CBU-ASD



CBU-ASD is a wireless control unit for LED and halogen drivers with 0-10V, 1-10V or DALI dimming interface. The control output can be configured either as analog 0-10V (and 1-10V) or digital Standalone DALI control interface.

CBU-ASD è un'unità di controllo wireless per illuminazione a LED e alogena con interfaccia di dimmerazione 0-10V, 1-10V o DALI. L'uscita di controllo può essere configurata sia come analogico 0-10V (e 1-10V) o interfaccia di controllo digitale standalone DALI.

## CBU-TED



CBU-TED is a Bluetooth controllable, Casambi enabled trailing-edge dimmer for operation of incandescent lamps, dimmable LED lamps and dimmable LED control gear. It can be installed behind a traditional wall switch, inside a luminaire or into a ceiling outlet box.

CBU-TED è un regolatore Bluetooth, controllato da Casambi, che consente il funzionamento delle lampade ad incandescenza, delle lampade dimmerabili a LED e del riduttore dimmerabile LED. Può essere installato dietro un tradizionale interruttore a parete, all'interno di un apparecchio d'illuminazione o in una scatola di uscita del soffitto.

## XPRESS



Xpress is a wireless user interface that can be configured via the Casambi app. The four target buttons can control a scene or an animation of the user's choice or simply one luminaire, one luminaire group or all lamps together if so desired.

Xpress è un'interfaccia utente wireless che può essere configurata tramite l'applicazione Casambi. I quattro pulsanti possono controllare una scena o un'animazione a scelta dell'utente oppure semplicemente un apparecchio d'illuminazione, un gruppo di luci o tutte le lampade insieme su desiderio dell'utilizzatore.

## DGD GATEWAY

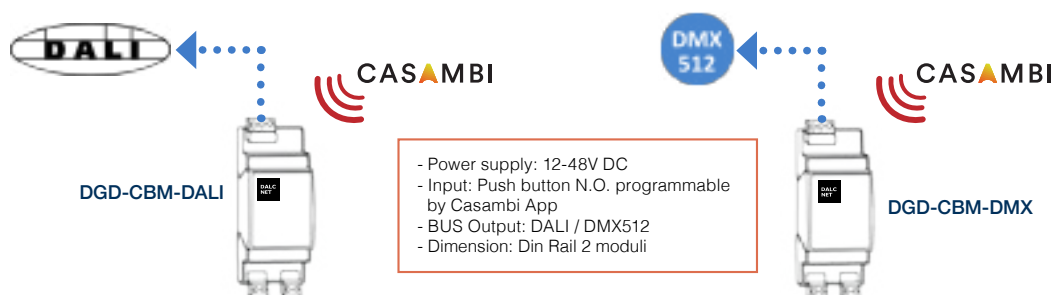


## SIGNAL CONVERTER FROM CASAMBI TO DALI OR DMX512 BUS PROTOCOL

DGD-CBM-DALI is a converter from Casambi signal to DALI bus protocol  
DGD-CBM-DMX is a converter from Casambi signal to DMX512 bus protocol  
Both equipped with a local command (push button) programmable by Casambi App.

## CONVERTE SEGNALE CASAMBI IN BUS DALI O DMX

DGD-CBM-DALI è un convertitore da segnale Casambi a protocollo bus DALI  
DGD-CBM-DMX è un convertitore da segnale Casambi a protocollo bus DMX512  
Dotati di un ingresso locale programmabile da applicazione Casambi.



CODE		Supply Voltage	Output	Command
<b>TIMER-CASAMBI</b>	Casambi backup timer	12-48V DC	-	APP CASAMBI - N.O. push button
<b>CBU-ASD</b>	Wireless control	230V AC	0-10V / DALI	APP CASAMBI
<b>CBU-TED</b>	Bluetooth controllable	230V AC	230V AC	APP CASAMBI
<b>XPRESS</b>	Wireless user interface	CR2430 Lithium-ion	-	APP CASAMBI
<b>DGD-CBM-DMX</b>	SIGNAL CONVERTER	12-48V DC	DMX	CASAMBI TO DMX
<b>DGD-CBM-DALI</b>	SIGNAL CONVERTER	12-48V DC	DALI	CASAMBI TO DALI

**FEATURES ADC1248-4CH-CASAMBI**

DC Input 12-24-48 Vdc

N. 4 Low voltage RELAY DRIVER output

N. 4 ANALOG output 0/1-10V

Remote Command: **CASAMBI App**

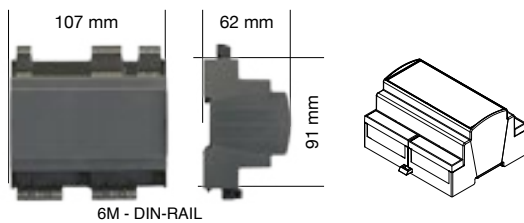
Local Command: 4 N.O. push-button

Conversion from Casambi signal to 0/1-10V command

Control up to four group of power supply with DIM function or LED dimmer with 0/1-10V command

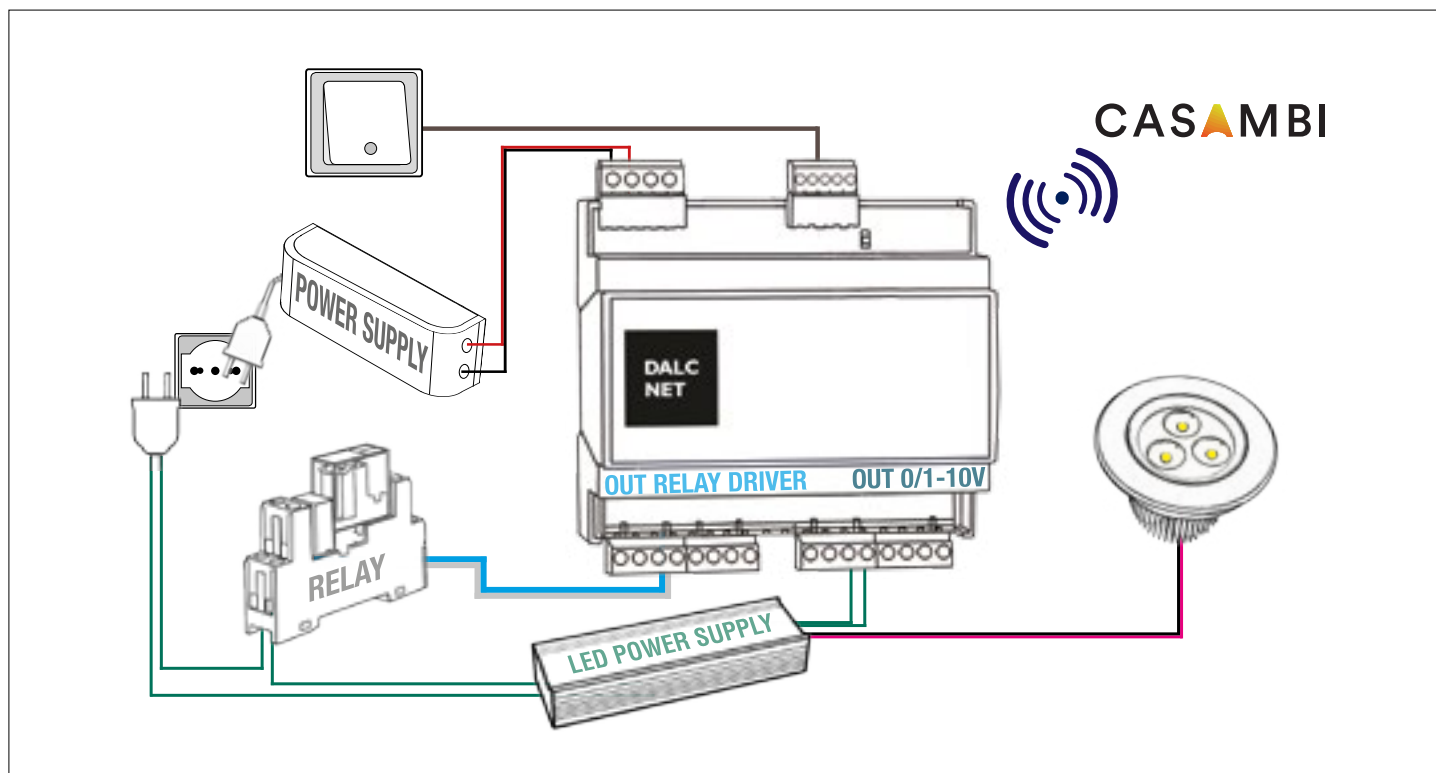
Extended temperature range min -25°C max +60°C

100% functional test - 5 years warranty



CODE	Supply Voltage	Output	Channels	Command
<b>ADC1248-4CH-CASAMBI</b>	12-24-48V DC	4 x 0-10 / 1-10 4 x Relay Driver	4 Analog 4 Relay Driver	N.O. Push Buttons / CASAMBI App





ADC1248-4CH-CASAMBI	FEATURES DIMMER CONVERTER	
Channels	4 Relay Driver Output	4 Analog Output 0/1-10V
Supply Voltage "Vin"	Min: 10.8 Vdc .. Max: 52.8 Vdc	
Ambient Temperature	Min: -25 .. Max: +60°C	
Protection Grade	IP10	
Wiring Buttons & Bus	1.5 mm <sup>2</sup> solid - 1 mm <sup>2</sup> stranded - 30/14 AWG	
Wiring Power , Out relay driver & Out 0/1-10V	2.5mm <sup>2</sup> solid - 1.5mm <sup>2</sup> stranded - 30/12 AWG	
Mechanical Dimension	107 x 91 x 62 mm – DIN RAIL 6M	
Packaging Dimension	164 x 124 x 71 mm	
Weight	220g	
FEATURES RELAY DRIVER OUTPUT		
Output Voltage	=Vin	
External Relay Range, per channel	Vin, max 500mA/ch	
FEATURES ANALOG OUTPUT 0/1-10V		
0-10V – Current Sink or Source	10mA	
1-10V – Current Sink or Source	10mA	
Supported load types	0-10V and 1-10V Power supply with DIM function and LED Dimmer	

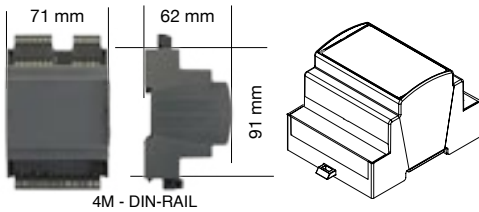






**FEATURES DLD - 4 CHANNEL RELAY - CASAMBI**

RELAY DRIVER+CASAMBI APP
DC Input 12-24-48 Vdc
Remote Command: <b>CASAMBI App</b>
Local Command: N.O. Push-button
Controls: ON / OFF
4 DIGITAL Output / RELAY DRIVER
Extended temperature range min -25°C max +60°C
100% functional test - 5 years warranty

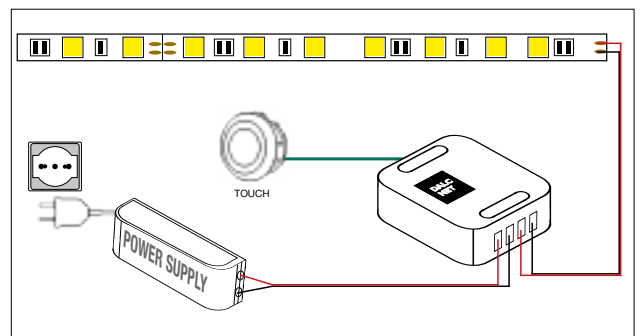
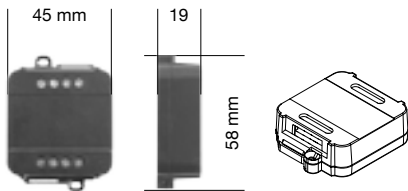


CODE	Supply Voltage	Output	Channels	Command
<b>DLD1248-4RL-CASAMBI</b>	12-48V DC	4 x DIGITAL OUT	4	CASAMBI 4 N.O. Push button





FEATURES DLT TOUCH
DIMMER+FADER+DRIVER
DC Input: 12-24 Vdc
Command: Touch
Voltage Outputs for R loads
Adjusting the brightness up to completed off
Soft start and soft stop
Optimized Output curve
Typical efficiency > 95%
100% functional test

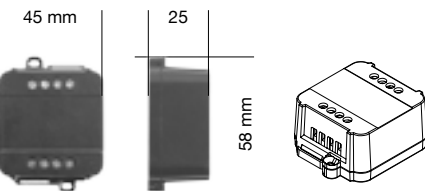


CODE	CV / CC	Supply Voltage	Output	Channels	Command
<b>DLT1224-1CV</b>	<b>CV</b>	12-24V DC	1 x 5A	1	Touch





FEATURES DAC 230 AC
AC DIMMER
Input: 230V AC
Output: 230V AC
Local Command: N.O. Push button - Memory Function
Dimming of dimmable lamp
Internal Menù: - Adjusting the minimum of brightness - Adjusting power-on fade in - Adjusting power off fade out
Single channel Dimmer output phase-out
Trailing edge dimming method for R-C loads
Stand-by Power <0,5W
Out Power 200W max
100% functional test - 5 years warranty

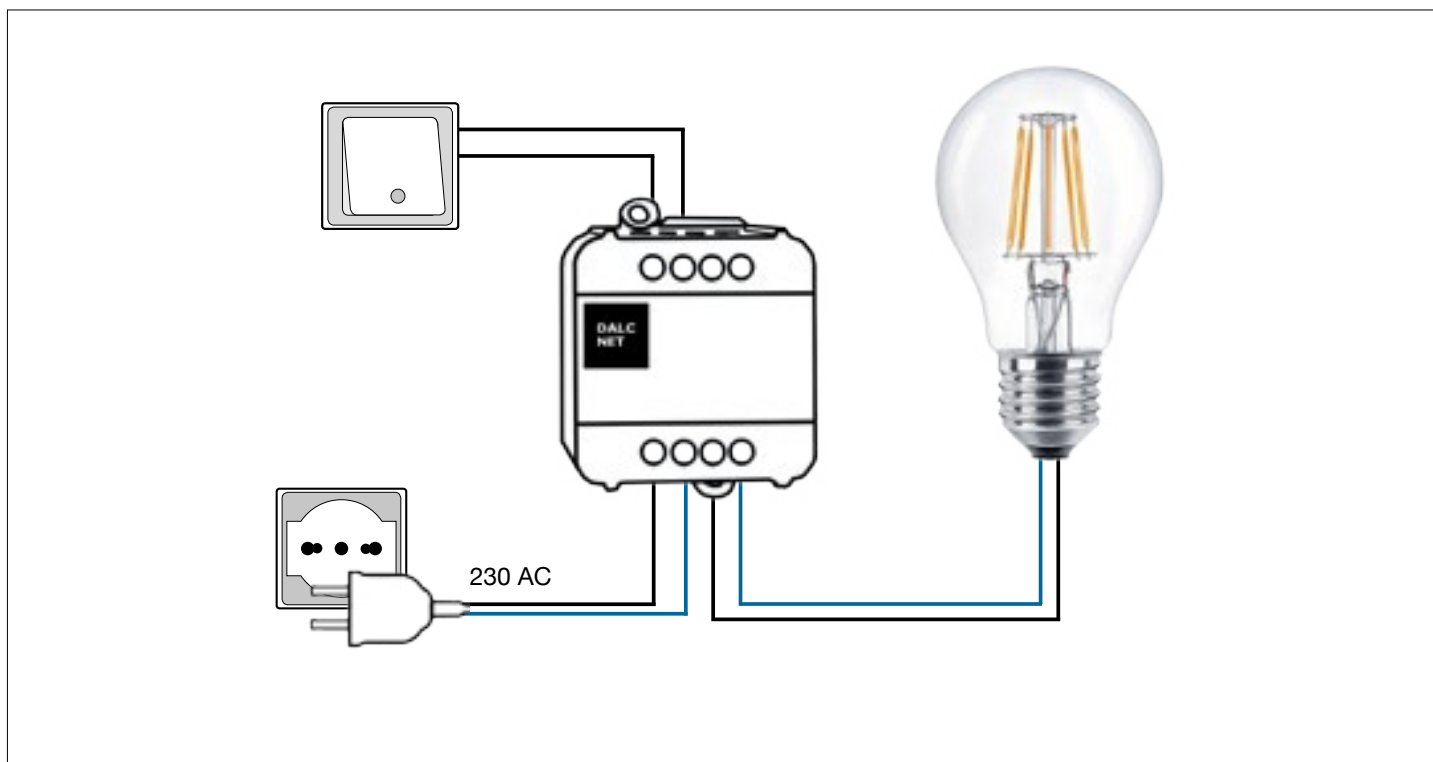


Push	Minimum Level Setting
Menù	Fade In / Fade Out



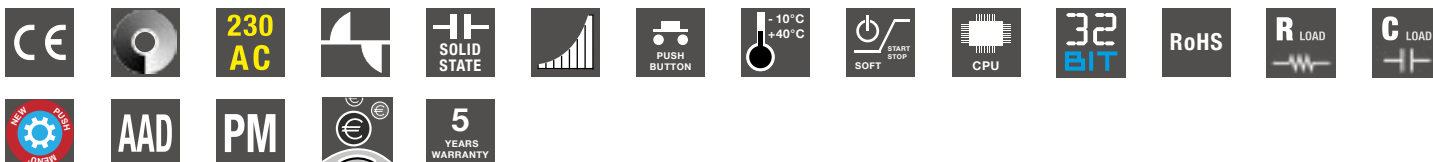
CODE	Supply Voltage	Output	Command
DAC230-1CH	230V AC	230V AC	N.O. Push button





## AC DIMMER 230

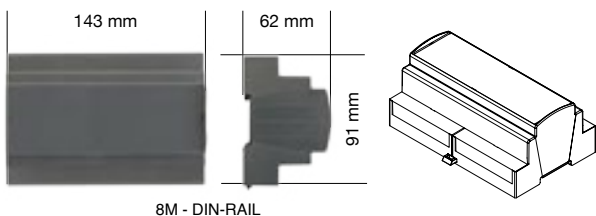
	230V AC
Supply Voltage	min: 210 Vac - max: 240 Vac
Mains Frequency	50 Hz
Nominal Output Voltage	Vin
Nominal Output Current	max 0,8A
Nominal Power 230VAC	200 W
Dimming Resolution	16 bit
Dimmung Method	Trailing Edge
Dimming Range	10 - 100 %
Ambient Temperature	min: -10 C° max: +40 C°
Protection Grade	IP20
Mechanical Dimension	45 x 58 x 25 mm
Packaging Dimension	56 x 68 x 35 mm
Weight	43 g



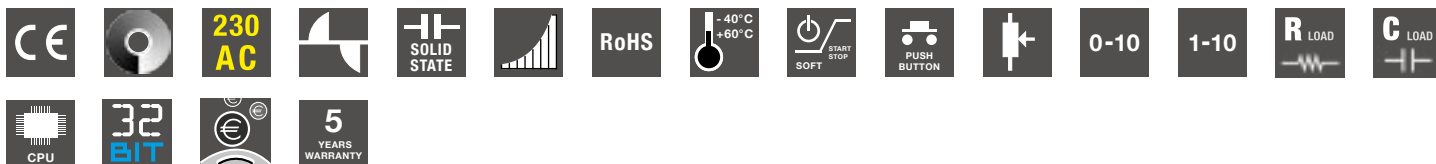




FEATURES DAC 230 AC 4 CH
AC DIMMER
Input: 230V AC
Output: 230V AC
BUS Comand: DALI / DMX512-RDM
Local Command: N.O. Push-button, 0-10V, 1-10V, Potentiometer
Dimming of dimmable lamp
Four Channels Dimmer output phase-out
Trailing edge dimming method for R-C loads
Minimum level settings
Out Power 200W max /ch
Extended temperature range min -40°C max +60°C
100% functional test - 5 years warranty



CODE	Supply Voltage	Outputs	Command
<b>DAC230-4CH-D-DMX</b>	230V AC	4 x 230V AC	DMX 4 N.O. Push button / 0-10V / 1-10V / Potentiometer
<b>DAC230-4CH-D-DALI</b>	230V AC	4 x 230V AC	DALI 4 N.O. Push button - 0-10V / 1-10V / Potentiometer

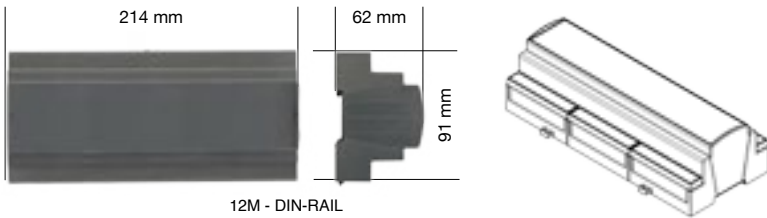






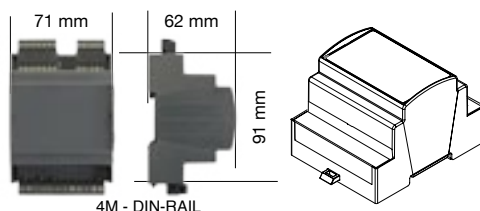
**FEATURES DAC 230 AC 8 CH**

AC DIMMER
Input: 230V AC
Output: 230V AC
BUS Comand: DALI / DMX512-RDM
Dimming of dimmable lamp
Eight Channels Dimmer output phase-out
Trailing edge dimming method for R-C loads
Minimun level settings
Out Power 200W max /ch
Extended temperature range min -40°C max +60°C
100% functional test - 5 years warranty



CODE	Supply Voltage	Outputs	Command
<b>DAC230-8CH-D-DMX</b>	230V AC	8 x 230V AC	DMX
<b>DAC230-8CH-D-DALI</b>	230V AC	8 x 230V AC	DALI





CODE	Supply Voltage	Bus Ethernet	Bus Modbus	Bus DMX	Bus DALI
<b>DGM01-1248</b>	12-48V DC	10/100 Mbit	RTU, from 9600 to 250K baud	512 slots NSC, SIP, RDM	125mA power supply



The DGM01-1248 Server Gateway is a device that allows the transfer of information between different bus type communication protocols (Ethernet, DMX512-RDM, DALI, MODBUS).

This product makes the advanced light control of networks possible, and allows the integration of different control systems for domotic applications.

What makes it unique is its capacity to receive and convert a series of different information with just one device.

The Gateway has a Web Server interface for configuring and managing protocols.



Il Server Gateway DGM01-1248 è un dispositivo che permette di trasferire informazioni fra diversi protocolli di comunicazione a bus (Ethernet, DMX512-RDM, DALI, MODBUS).

Con questo prodotto è possibile effettuare un controllo evoluto della luce a livello di rete, e permette di integrare diversi sistemi di controllo per applicazioni di domotica.

Quel che lo rende unico è la capacità di ricevere e trasformare una molteplicità di informazioni con un solo dispositivo.

Il Gateway dispone di un'interfaccia Web Server per la configurazione e gestione dei protocolli.



Der Server Gateway DGM01-1248 ist ein Gerät, das Informationen zwischen verschiedenen Bus-Kommunikationsprotokollen (Ethernet, DMX512-RDM, DALI, MODBUS) übertragen kann.

Mit diesem Produkt kann eine erweiterte Lichtsteuerung über das Netz durchgeführt werden und es können verschiedene Steuerungssysteme in Domotik-Anwendungen integriert werden.

Das Einzigartige daran ist die Fähigkeit, mit einem einzigen Gerät eine Vielzahl von Informationen zu empfangen und umzuwandeln. Das Gateway verfügt über eine Schnittstelle zum Web-Server für die Konfiguration und Verwaltung der Protokolle.



Le Serveur Gateway DGM01-1248 est un dispositif qui permet de transférer des informations entre différents protocoles de communication bus (Ethernet, DMX512-RDM, DALI, MODBUS).

Avec ce produit il est possible d'effectuer un contrôle évolué de la lumière au niveau d'un réseau, et il permet d'intégrer différents systèmes de contrôle pour des applications de domotique. Ce qui le rend unique c'est la capacité de recevoir et de transformer un grand nombre d'informations avec un seul dispositif.

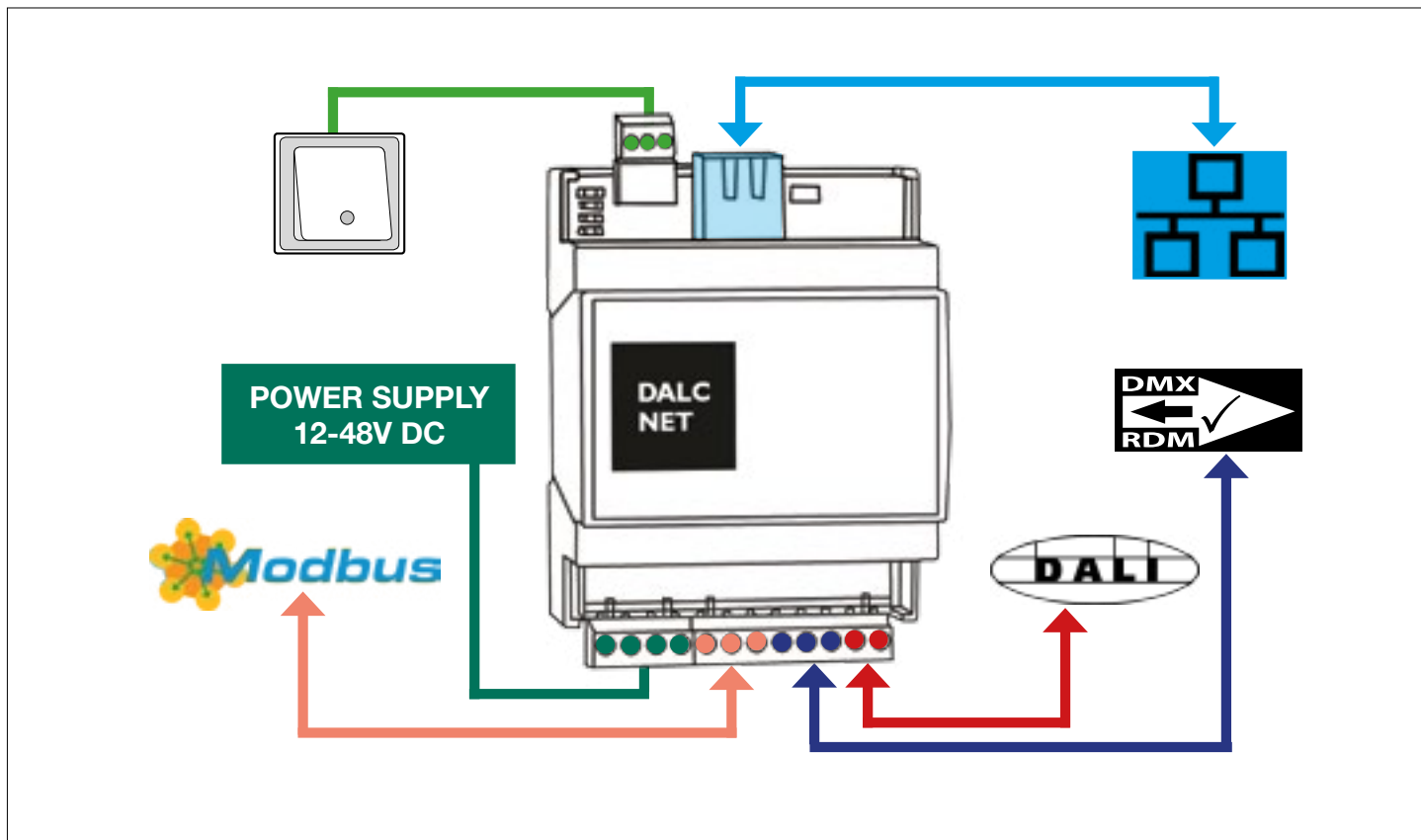
Le Gateway dispose d'une interface Web Server pour la configuration et la gestion des protocoles.



El Servidor Gateway DGM01-1248 es un dispositivo que permite transferir informaciones entre diferentes protocolos de comunicación (Ethernet, DMX512-RDM, DALI, MODBUS).

Este producto permite realizar un control del flujo luminoso a nivel de red e integrar diferentes sistemas de control para usos en domótica. Es un producto único por su capacidad de recibir y transformar múltiples tipos de información en un solo dispositivo.

El Gateway tiene una interfaz Web Server para la configuración y gestión de los protocolos.



DGM01-1248				
Supply Voltage	min: 10.8 Vdc - max: 52.8 Vdc			
Input Current	voltage	min	typ	max
	@ 12Vdc	110mA (1,32W)	320mA (3,84W)	500mA
	@ 24Vdc	60mA (1,44W)	160mA (3,84W)	500mA
	@ 48Vdc	40mA (1,92W)	80mA (3,84W)	500mA
Ambient Temperature	min: -10 C° max: +40 C°			
ETHERNET	10/100 Mbit baseT Full Duplex Auto Negotiation			
MODBUS RTU	RS-485, from 9600 to 250K baud			
DMX512-A-RDM	Max 512 channels (it depends on the wiring) open fail safe - short fail safe			
DALI	Max 64 units, buit-in 125mA power supply			
Protection Grade	Alluminium Box: IP20 - Plastic Box: IP10			
Mechanical Dimension	Alluminium Box: 105x70x47 - Plastic Box: DIN RAIL 4mod.			
Packaging Dimension	124 x 85 x 71 mm			
Weight	Alluminium Box: 230g - Plastic Box: 125g			



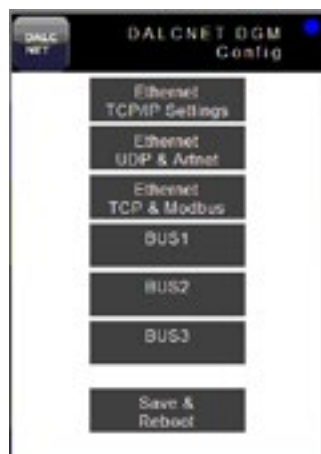
## Server Gateway DALI BUS Manager - Address Devices (Commissioning)



### WEB SERVER HTML5

DGM01 provides a WebApp for supervision and setting of all available channels, which can be used from every modern device with an HTML5 capable browser. A window with 6 visible channels is displayed. All the other channels can be scrolled to be visualized.

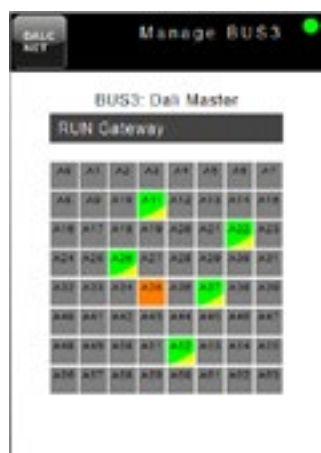
Il DGM01 dispone di una WebApp di supervisione e impostazione di tutti i canali disponibili, utilizzabile da qualsiasi dispositivo recente dotato di browser compatibile HTML5. Viene visualizzata una finestra con 6 canali visibili, si possono scorrere tutti gli altri canali.



### DEVICE CONFIG

Clicking on the related button, you enter the configuration page of the Gateway, which allows to define settings for all communication types on the device. In this section it is possible to make the configuration of the IP address, of the network protocols and of BUSES: Ethernet TCP/IP Settings, Ethernet UDP & Art-Net, Ethernet TCP & Modbus, BUS1, BUS2, BUS3

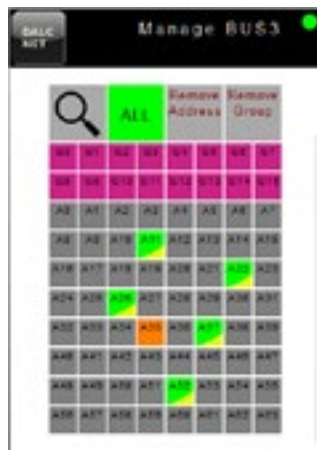
Cliccando sulla casella corrispondente, si entra nella pagina di configurazione del Gateway, che permette di definire le impostazioni per tutte le tipologie di protocolli di comunicazione presenti nel dispositivo. In questa sezione è possibile effettuare la configurazione dell'indirizzo IP, dei protocolli di rete e dei BUS: Ethernet TCP/IP Settings, Ethernet UDP & Art-Net, Ethernet TCP & Modbus, BUS1, BUS2, BUS3



### BUS MANAGER

When the Bus is configured as **DALI Master**, it's possible to monitor, address and manage DALI devices connected on DALI BUS. In Manage BUS3 section there is a drop-down menu with which is possible to choose three operating modes that allow a complete configuration of a DALI system: **RUN Gateway**, **Address Devices** (drag&drop), **Config Devices**

Quando il bus è impostato come **Master DALI**, è possibile monitorare, indirizzare, e gestire i dispositivi DALI collegati. Nella sezione Manage BUS3 è possibile scegliere, tramite un menù a tendina, le tre modalità operative che permettono la completa configurazione di un sistema DALI: **RUN Gateway**, **Address Devices** (drag&drop), **Config Devices**



### DALI BUS Manager - Address Devices (Commissioning)

In this mode 64 devices (i.e. a DALI universe) and 16 groups appear on a grid. These addresses and groups can be managed by using the following functions: ADDRESSING, ERASE SYSTEM, ADDRESS CHANGE, ADDING TO A GROUP, REMOVE FROM A GROUP

In questa modalità operativa vengono visualizzati in una griglia i 64 dispositivi (i.e. un universo DALI) e i 16 gruppi che possono essere gestiti tramite le funzioni: INDIRIZZAMENTO, CANCELLAZIONE IMPIANTO, MODIFICA INDIRIZZO, AGGIUNTA AD UN GRUPPO, RIMOZIONE DA UN GRUPPO



### DALI Bus Manager – Config Devices

When this function is selected from the drop-down menu, the standard operating mode of the Gateway is suspended. In this section is possible to broadcast the value of some useful parameters or configure the same parameters as factory default values.

Quando viene selezionata questa modalità sul menù a tendina, viene interrotto il funzionamento standard del Gateway. In questa sezione è possibile trasmettere in broadcast alcuni parametri utili o riportare gli stessi parametri ai valori di default (factory default).

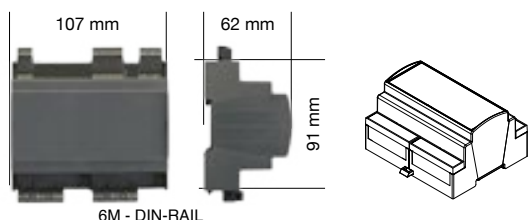




**FEATURES ADC1248 - 4 CHANNEL - DIM CONVERTER**

DC Input 12-24-48 Vdc
N. 4 Low voltage RELAY DRIVER output
N. 4 ANALOG output 0/1-10V
N. 1 Channel Status LEDs indicate whether a load is ON or OFF
BUS Command: DMX512-RDM, DALI, MODBUS
Local Command: N.O. push-button, Potentiometer, 0-10V, 1-10V
Extra Local Command to control a group of output, MASTER function
Conversion from Analog signal to Digital signal
MASTER & SLAVE function on DMX version and DALI *
Control up to four groups of power supply with DIM function or LED dimmer 0/1-10V command
Adjusting the minimum value of the analog 0/1-10V output
Extended temperature range min -40°C max +60°C
100% functional test - 5 years warranty

\* PSU1248-DALI required.



CODE	Supply Voltage	Output	Channels	Command
<b>ADC1248-4CH-DALI</b>	12-24-48V DC	4 x 0-10 / 1-10 4 x Relay Driver 1 x Channel Status LEDs	4 Analog 4 Relay Driver	DALI Input 4x & Master 1x N.O. Push Buttons / 0-10 / 1-10 / Potentiometer
<b>ADC1248-4CH-DMX</b>	12-24-48V DC	4 x 0-10 / 1-10 4 x Relay Driver 1 x Channel Status LEDs	4 Analog 4 Relay Driver	DMX Input 4x & Master 1x N.O. Push Buttons / 0-10 / 1-10 / Potentiometer
<b>ADC1248-4CH-MODBUS</b>	12-24-48V DC	4 x 0-10 / 1-10 4 x Relay Driver 1 x Channel Status LEDs	4 Analog 4 Relay Driver	MODBUS RTU Input 4x & Master 1x N.O. Push Buttons / 0-10 / 1-10 / Potentiometer

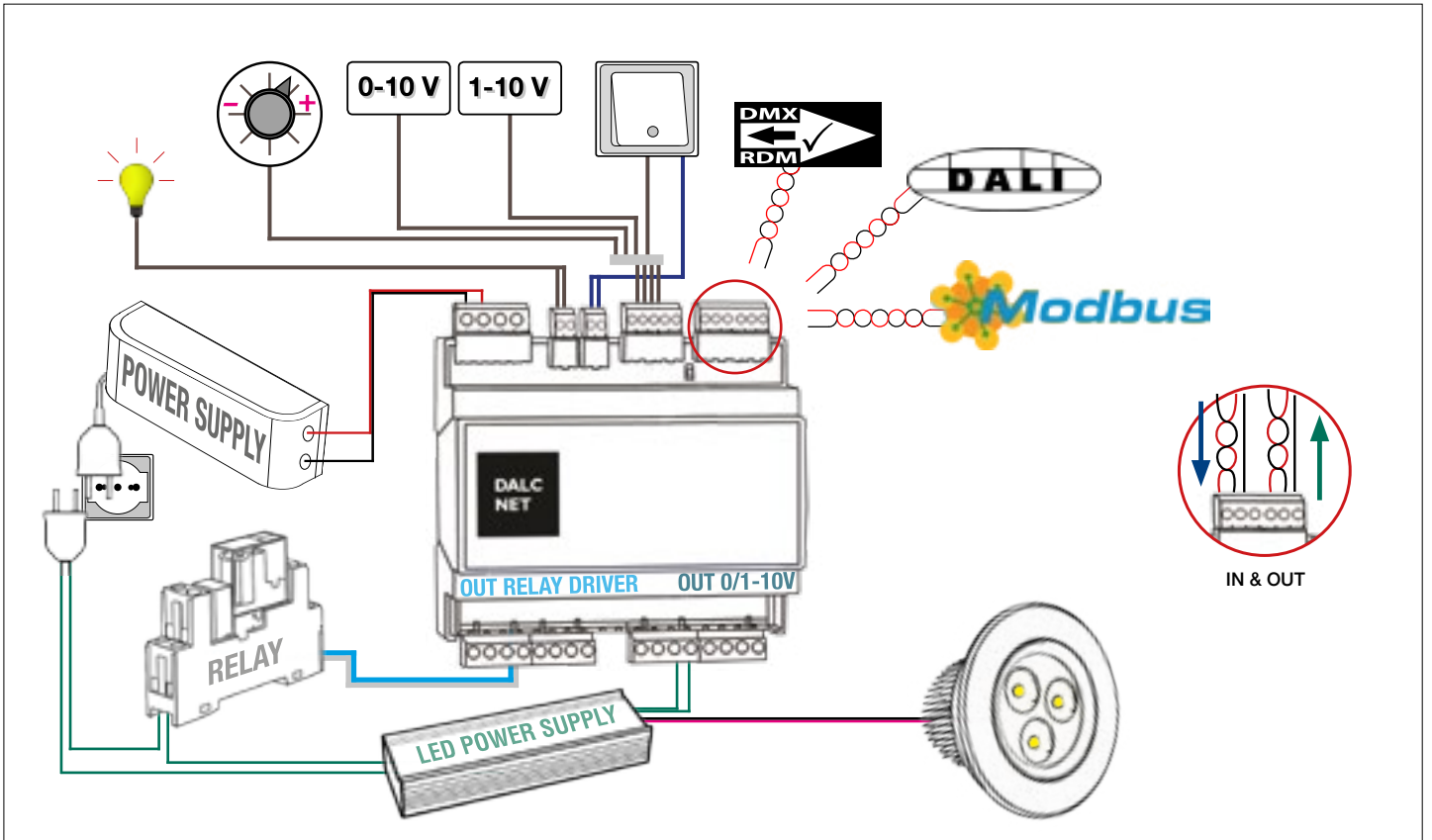
**PSU1248-DALI****DALI**

DALI power supply is an important element in DALI installations. The PSU1248-DALI is able to provide power to the DALI bus where devices have not their own power supply.



L'alimentatore DALI è un elemento fondamentale negli impianti DALI. Il PSU1248-DALI è in grado di fornire l'alimentazione al bus DALI per i dispositivi privi di alimentazione propria.

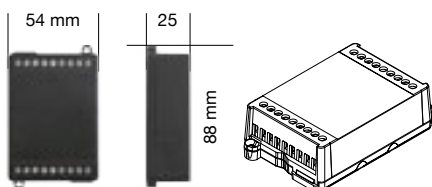
CODE	Features	Input	Output	Power	Control
<b>PSU1248-DALI</b>	DALI SUPPLY	12-48V DC	16V - 150mA	2,4 W	LED for bus power



ADC1248-4CH		FEATURES DIMMER CONVERTER	
Channels	4 Relay Driver Output	4 Analog Output 0/1-10V	
Channel Status LED	1 Channel Status LED indicate whether a load is ON or OFF		
Supply Voltage "Vin"	Min: 10.8 Vdc .. Max: 53.5 Vdc		
Ambient Temperature	Min: -40 .. Max:+60°C		
Protection Grade	IP10		
Wiring Buttons & Bus	1.5 mm <sup>2</sup> solid - 1 mm <sup>2</sup> stranded - 30/14 AWG		
Wiring Power , Out relay driver & Out 0/1-10V	2.5mm <sup>2</sup> solid - 1.5mm <sup>2</sup> stranded - 30/12 AWG		
Mechanical Dimension	107 x 91 x 62 mm – DIN RAIL 6M		
Packaging Dimension	164 x 124 x 71 mm		
Weight	205g		
FEATURES RELAY DRIVER OUTPUT			
Output Voltage	=Vin		
External Relay Range, per channel	Vin, max 500mA/ch		
FEATURES ANALOG OUTPUT 0/1-10V			
0-10V – Current Sink or Source	10mA		
1-10V – Current Sink or Source	10mA		
Supported load types	0-10V and 1-10V Power supply with DIM function and LED Dimmer		
FEATURES ANALOG INPUT 1-10V			
1-10V – Source Current	0,5mA		

**FEATURES DMX SPLITTER 2 CH**

Power Supply 12-24 Vdc
2 Bus DMX512-RDM ; 1 Bus DMX IN + THRU
Isolated BUS Input
Isolated BUS Output
Bidirectional data communication
Signal regeneration
32 bit ARM processor
100% functional test - 5 years warranty



CODE	Supply Voltage	Input Channels	Output Channels	Command
<b>DMX-SPLITTER-2CH</b>	12-24V DC	1 x THRU	2	DMX
<b>DMX-SPLITTER-2CH-RDM</b>	12-24V DC	1 x THRU	2	DMX-RDM



DMX SPLITTER 2CH				
Supply Voltage	min: 10.8 Vdc - max: 26,4 Vdc			
Input Current	voltage	min	typ (DMX input, 2 x 120ohm load outputs)	max
	@ 12Vdc	210mA (2,52W)	320mA (3,84W)	500mA
	@ 24Vdc	115mA (2,76W)	160mA (3,84W)	500mA
Ambient Temperature	min: -10 C° max: +40 C°			
DMX512-RDM	NSC 512 slots Max units: 32 standard open fail safe - short fail safe			
Protection Grade	IP20			
Mechanical Dimension	88 x 54 x 25 mm			
Packaging Dimension	90 x 59 x 36 mm			
Weight	80 g			



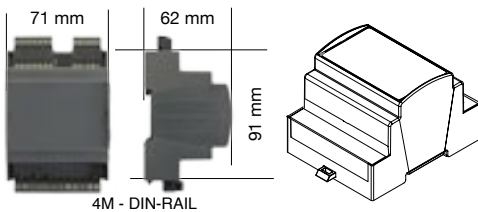
# SPLITTER

## DMX-RDM 4 CHANNEL



### FEATURES DMX SPLITTER 4 CH

Power Supply 12-24-48 Vdc
4 Bus DMX512-RDM ; 1 Bus DMX IN + THRU
Isolated BUS Input
Isolated BUS Output
Bidirectional data communication
Signal regeneration
32 bit ARM processor
100% functional test - 5 years warranty



CODE	Supply Voltage	Input Channels	Output Channels	Command
<b>DMX-SPLITTER-4CH</b>	12-48V DC	1 + THRU	4	DMX
<b>DMX-SPLITTER-4CH-RDM</b>	12-48V DC	1 + THRU	4	DMX-RDM



DMX SPLITTER 4CH	DMX-SPLITTER-4CH			DMX-SPLITTER-4CH-RDM
Supply Voltage	min: 10.8 Vdc - max: 52,8 Vdc			
Input Current	voltage	min	typ (DMX input, 4 x 120ohm load outputs)	max
	@ 12Vdc	210mA (2,52W)	320mA (3,84W)	500mA
	@ 24Vdc	115mA (2,76W)	160mA (3,84W)	500mA
	@ 48Vdc	60mA (2,88W)	80mA (3,84W)	500mA
Ambient Temperature	min: -10 C° max: +40 C°		min: -40 C° max: +60 C°	
DMX512-RDM	NSC 512 slots Max units: 32 standard open fail safe - short fail safe			
Protection Grade	IP10			
Mechanical Dimension	71x91x62 - DIN RAIL 4mod.			
Packaging Dimension	124 x 85 x 71 mm			
Weight	125 g			





**FEATURES DGD COVERTER**

Power Supply 12-48 Vdc
Input: N.O. Push Button
BUS Input/Output: DALI / DMX512 or DMX512 / DALI
Dimension: Din RAIL 2 moduli
5 years warranty

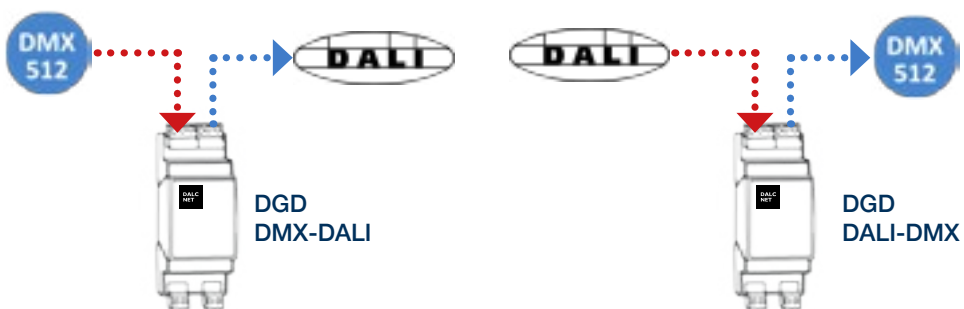
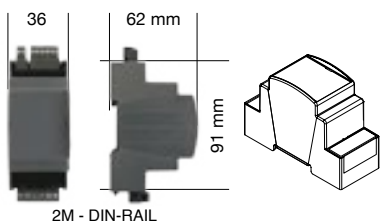
**🇬🇧 BUS SIGNAL CONVERTER (DALI TO DMX or DMX TO DALI)**

DGD-DALI-DMX and DGD-DMX-DALI are signal converters of from DALI bus to DMX512 bus protocol and viceversa.

Both equipped with a local command (push button) as master control for output bus in the case of missing input bus.

**🇮🇹 CONVERTE SEGNALE BUS (DALI TO DMX or DMX TO DALI)**

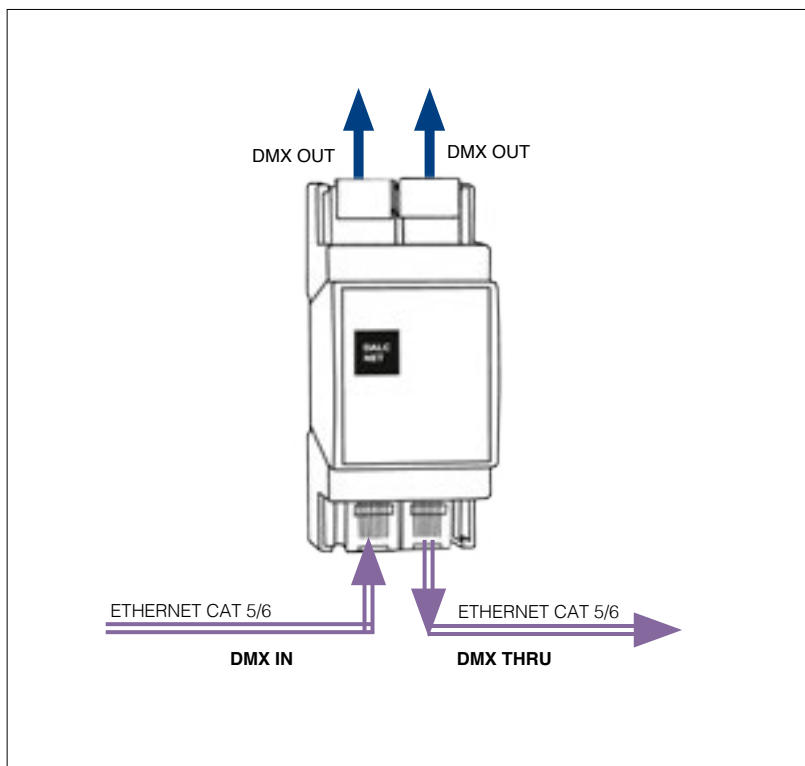
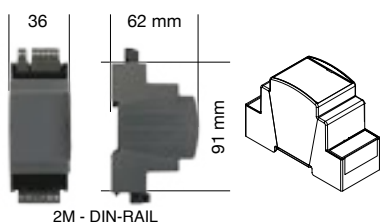
DGD-DALI-DMX e DGD-DMX-DALI sono convertitori da segnale DALI a DMX512 oppure da DMX512 a DALI. Dotato di un ingresso locale.



CODE	Power Supply	Input	Output	Command
<b>DGD-DMX-DALI</b>	12-48V DC	DMX	DALI *	DMX - N.O. Push button
<b>DGD-DALI-DMX</b>	12-48V DC	DALI	DMX	DALI - N.O. Push button
<b>DGD-BLE-DMX</b>	12-48V DC	BLUEDIMMER	DMX	BLE - N.O. Push button
<b>DGD-BLE-DALI</b>	12-48V DC	BLLUEDIMMER	DALI *	BLE - N.O. Push button

\* PSU1248-DALI required.





CODE	Channel	IN / Out	Command
<b>DMX-HUB-2CH</b>	2	RJ45	DMX
CODE	Cable	Impedance	Command
<b>CABDMX30</b>	100 mt	120 Ω	DMX



DMX-HUB-2CH is an accessory that makes DMX wiring quick and easy. It has a DMX input/output using an RJ45 connector. This means that a Cat 5 or Cat 6 cable can be used for carrying the DMX signal. It has 2 output terminals for connecting DALCNET control boxes. This makes wiring easy and guarantees optimum signal quality.



DMX-HUB-2CH è un accessorio che rende il cablaggio DMX semplice e veloce. Dispone di ingresso/uscita DMX mediante connettore RJ45, questo permette l'utilizzo di cavo Cat 5 oppure Cat 6 per il trasporto del segnale DMX. Dispone di 2 uscite a morsetto per collegare le centraline DALCNET. Questo rende il cablaggio semplice e assicura una qualità di segnale ottimale.



DMX-HUB-2CH ist ein Zubehörteil, das die DMX-Verkabelung schnell und einfach macht. Es verfügt über einen DMX-Eingang/-Ausgang über RJ45-Anschlüsse, dadurch können für die DMX-Signalübertragung Cat-5- oder Cat-6-Kabel verwendet werden. Es verfügt über 2 Ausgangsklemmen zum Anschluss von DALCNET-Steuerungen. Dies sorgt für eine einfache Verkabelung und gewährleistet eine optimale Signalqualität.



DMX-HUB-2CH est un accessoire qui rend le câblage DMX simple et rapide. Il dispose d'entrée/sortie DMX par connecteur RJ45, ce qui permet l'utilisation de câble Cat 5 ou Cat 6 pour le transport du signal DMX. Il dispose également de 2 sorties à borne pour connecter les centrales DALCNET. Cela simplifie le câblage et assure une qualité de signal optimale.



DMX-HUB-2CH es un accesorio que facilita y agiliza el cableado DMX. Dispone de entrada/salida DMX mediante conector RJ45, lo que permite utilizar el cable Cat 5 o Cat 6 para transportar la señal DMX. Dispone de 2 salidas con terminal para conectar las unidades de control DALCNET. De esta manera, el cableado es sencillo y garantiza una excelente calidad de señal.



## STICK-DE3



STICK-DE3 is a DMX touch-sensitive interface, projected to provide a control solution to any type of projects in a simple and easy to use touch panel.

It works in stand-alone mode permitting the management of single-color or RGB lighting settings. Thanks to the color display it is possible to see the settings in use.

STICK-DE3 is easy to be programmed by laptop, Mac, Android, Ipad, Iphone to create and store scenes and stand-alone functions.



Lo STICK-DE3 è un'interfaccia di controllo DMX touch-sensitive, progettato per fornire una soluzione di controllo per qualsiasi tipologia di progetti mantenendo un Touch Panel semplice e intuitivo. Permette il funzionamento stand-alone per la gestione di sistemi di illuminazione monocromatico o RGB e grazie al display a colori consente di visualizzare le impostazioni in uso.

Lo STICK-DE3 è facilmente programmabile da PC, Mac, Android, ipad, iphone per la creazione e la memorizzazione delle scene e delle funzioni stand-alone.

## STICK-CU4



STICK-CU4 is a DMX touch-sensitive interface, designed for the control of RGB, RGBW lights and stand-alone mode. Thanks to 512 DMX channels it permits to create up to 36 scenes, to select just touching the 6 buttons on it. This controller is easily programmable by laptop or Mac.

Lo STICK-CU4 è un'interfaccia di controllo DMX touch-sensitive, progettato per il controllo della luce RGB, RGBW e con funzionamento stand-alone. Grazie ai suoi 512 canali DMX permette la creazione fino a 36 scene richiamabili tramite i suoi 6 touch buttons. Il controller è facilmente programmabile da PC o Mac per la realizzazione di molteplici scene e funzioni stand-alone.

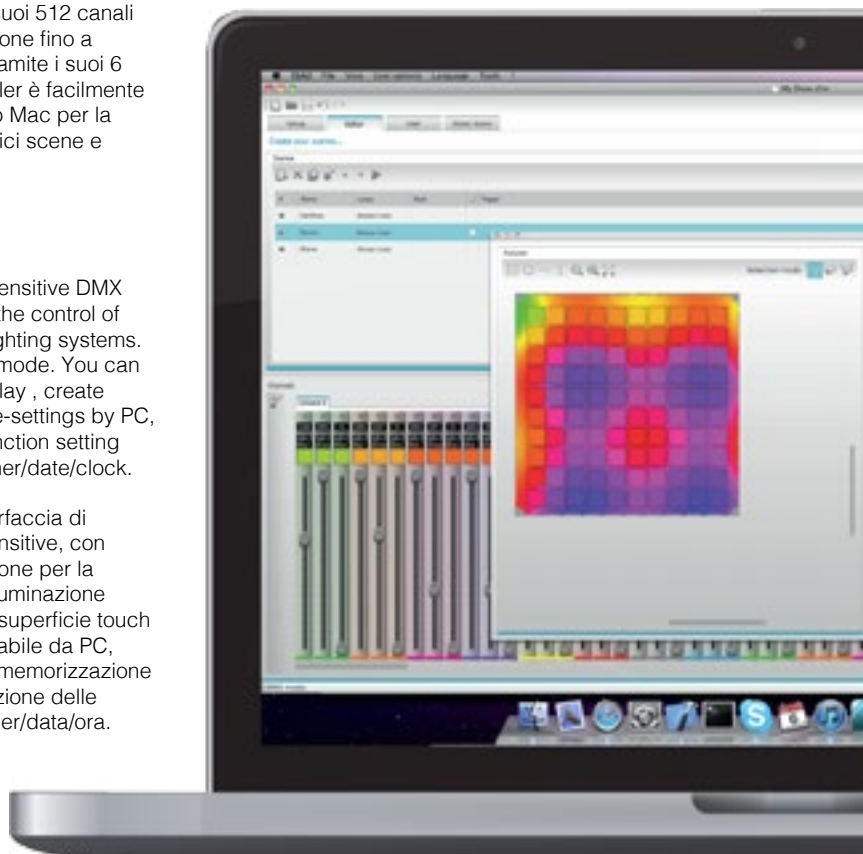
## STICK-KE1



STICK-KE1 is a touch-sensitive DMX controller interface, for the control of monochrome or RGB lighting systems. It works in stand-alone mode. You can program the touch display, create scenes and store scene-settings by PC, and also choose the function setting such as stand-alone timer/date/clock.

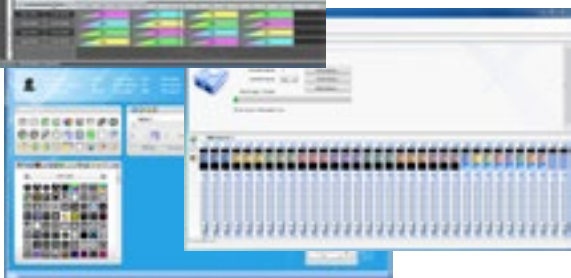
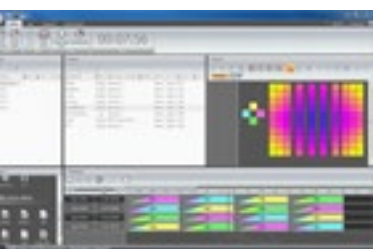
Lo STICK-KE1 è un'interfaccia di controllo DMX touch-sensitive, con funzionamento stand-alone per la gestione di sistemi di illuminazione monocoloro e RGB. La superficie touch è facilmente programmabile da PC, come la creazione e la memorizzazione delle scene e l'impostazione delle funzioni stand-alone timer/data/ora.

CODE	Supply Voltage	Output	Command
<b>STICK-DE3</b>	5-6V DC	1024 CH	DMX
<b>STICK-CU4</b>	5-6V DC	512 CH	DMX
<b>STICK-KE1</b>	5-6V DC	1024 CH	DMX
POWER SUPPLY NOT INCLUDED - ALIMENTATORE NON INCLUSO			





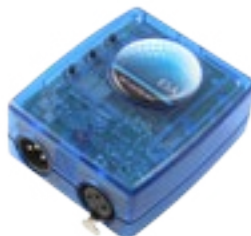
SLESA-UE7



SLESA is a communication interface between software and DMX devices. Each SLESA interface includes a stand-alone memory, that allows to store a color show for ex and to reproduce it without using a laptop.



SLESA è un' interfaccia di comunicazione tra il software e dispositivi DMX. Ogni interfaccia SLESA include una memoria stand-alone consentendo di memorizzare uno show e riprodurlo senza necessità di avere con sé un computer.



SLESA-U8



SLESA-U9

CODE	Output	Supply Voltage	Stand-Alone Memory	Porta
<b>SLESA-UE7</b>	2x512 DMX Channels	5-6V DC	Micro SD Memory	USB mini - RJ45
<b>SLESA-U8</b>	512 DMX Channels	5-6V DC	128k	USB mini
<b>SLESA-U9</b>	256 DMX Channels	5-6V DC	20k	USB mini

POWER SUPPLY NOT INCLUDED - ALIMENTATORE NON INCLUSO

Software available for Android and Apple Devices.



Download on the  
App Store

Download for  
Google Play



### DTDMXRGBW-4



DTDMXRGBW-4 is a touch-sensitive DMX controller interface, with stand-alone mode RGBW for 4 areas, with possibility of programming 4 scenes.



Il DTDMXRGBW-4 è un' interfaccia di controllo DMX touch sensitive in vetro, funzionamento stand-alone RGBW per 4 zone, con possibilità di programmare 4 scene.

CODE	Supply Voltage	Output	Command
<b>DTDMXRGBW-4</b>	5V DC	16 CH	DMX
WHITE COLOR - COLORE BIANCO			



### DTDMX16C



DTDMX16C is a touch-sensitive DMX controller interface, with stand-alone mode and 16 outputs.



Il DTDMX16C è un' interfaccia di controllo DMX touch sensitive, funzionamento stand-alone a 16 uscite.

CODE	Supply Voltage	Output	Command
<b>DTDMX16C</b>	12-24V DC	16 CH	DMX
POWER SUPPLY NOT INCLUDED - ALIMENTATORE NON INCLUSO			



### DTDMXRGBW



DTDMXRGBW is a touch-sensitive DMX controller interface, with stand-alone mode, RGBW function with the possibility to create different scenes of colour. 4 DMX output channels.



Il DTDMXRGBW è un' interfaccia di controllo DMX touch sensitive, funzionamento stand-alone RGBW, con uscita 4 canali DMX e giochi di colore.

CODE	Supply Voltage	Output	Command
<b>DTDMXRGBW</b>	12-24V DC	4 CH	DMX
POWER SUPPLY NOT INCLUDED - ALIMENTATORE NON INCLUSO			



**RX4**  
**UNIVERSAL RECEIVER**



**TX4**  
**TRANSMITTER**

CODE	Model	Frequency	Channel	Power Supply	Distance Range	Operating Temp.
<b>RX4</b>	Universal Receiver	433,92MHz	4	12-24 AC/DC	80+250 mt	-10 ÷ +55 C°
<b>TX4</b>	Transmitter	433,92MHz	4		80+250 mt	0 ÷ 55 C°



**Products Info:**

- Supply Voltage: DC24V
- Selected 3535 LED
- Package: 5meter/roll
- LED number: 60-120pcs/meter
- Power consumption:12-24W/M

CODE	Supply Voltage	Led	Power	Typ	Reel	IP Rating	Color	Lenght
<b>LED-3535-60RGB-24-IP20</b>	24V DC	60	12W/M	Pixel Strip	5M/reel	IP20	White	5 Meter
<b>LED-3535-120RGB-24-IP20</b>	24V DC	120	24W/M	Pixel Strip	5M/reel	IP20	White	5 Meter

## PIXEL TO PIXEL

**Products Info:**

- Supply Voltage: DC5V - IC Type:WS2812
- Package: 5meter/roll
- LED number: 30-60pcs/meter
- Pixel:one led one pixel
- Viewing angle:≥140
- Power consumption:9-18W/M

CODE	Supply Voltage	Led	Power	Typ	Reel	IP Rating	Color	Lenght
<b>LED-5050-30RGB-P-5V-B</b>	5V DC	30	9W/M	Pixel Strip	5M/reel	IP20	Black	5 Meter
<b>LED-5050-60RGB-P-5V-B</b>	5V DC	60	18W/M	Pixel Strip	5M/reel	IP20	Black	5 Meter

**Applications:**

- Path & contour marking
- Elegant interior decoration
- Landscape outlines
- Archway, canopy and bridge edge lighting
- Lights for shows and events
- Lights for shop display and decoration
- Decorative lights for disco, bars, cafe, casino







## D38-DIMMABLE



CODE	Supply Voltage	Output	Ch.	Dimmable	Input V Range	Size
<b>D38-350-D</b>	12-48V DC	350mA	1	Yes	9-52.8Vdc	Diameter 38mm
<b>D38-500-D</b>	12-48V DC	500mA	1	Yes	9-52.8Vdc	Diameter 38mm
<b>D38-700-D</b>	12-48V DC	700mA	1	Yes	9-52.8Vdc	Diameter 38mm
<b>D38-950-D</b>	12-48V DC	950mA	1	Yes	9-52.8Vdc	Diameter 38mm

## D30-DIMMABLE



CODE	Supply Voltage	Output	Ch.	Dimmable	Input V Range	Size
<b>D30-350-D</b>	12-48V DC	350mA	1	Yes	9-52.8Vdc	Diameter 30mm
<b>D30-500-D</b>	12-48V DC	500mA	1	Yes	9-52.8Vdc	Diameter 30mm

## D30X11



CODE	Supply Voltage	Output	Ch.	Dimmable*	Input V Range	Size
<b>D30X11-150</b>	12-24V DC	150mA	1	-	9-26.4Vdc	30x11mm
<b>D30X11-250</b>	12-24V DC	250mA	1	-	9-26.4Vdc	30x11mm
<b>D30X11-350</b>	12-24V DC	350mA	1	-	9-26.4Vdc	30x11mm
<b>D30X11-500</b>	12-24V DC	500mA	1	-	9-26.4Vdc	30x11mm

\* Dimmable Version on request

## D40x20



CODE*	Supply Voltage	Output	Ch.	Dimmable	Input V Range	Size
<b>D40x20-150-D</b>	12-48V DC	150mA	1	Yes	9-52.8Vdc	40x20mm
<b>D40x20-250-D</b>	12-48V DC	250mA	1	Yes	9-52.8Vdc	40x20mm
<b>D40x20-350-D</b>	12-48V DC	350mA	1	Yes	9-52.8Vdc	40x20mm
<b>D40x20-500-D</b>	12-48V DC	500mA	1	Yes	9-52.8Vdc	40x20mm

\* Wago connectors on request

## M30x15

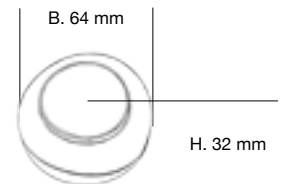


CODE	Supply Voltage	Output	Ch.	Dimmable	Input V Range	Size
<b>M30x15-150</b>	12-24V DC	150mA	1	-	9-26.4Vdc	30x15mm
<b>M30x15-250</b>	12-24V DC	250mA	1	-	9-26.4Vdc	30x15mm
<b>M30x15-350</b>	12-24V DC	350mA	1	-	9-26.4Vdc	30x15mm
<b>M30x15-500</b>	12-24V DC	500mA	1	-	9-26.4Vdc	30x15mm

## D45x12-1CV



CODE	Supply Voltage	Output	Ch.	Dimmable	Input V Range	Size
<b>D45X12-1CV</b>	12-48V DC	2,5A	1	Yes	9-52.8Vdc	45x12mm



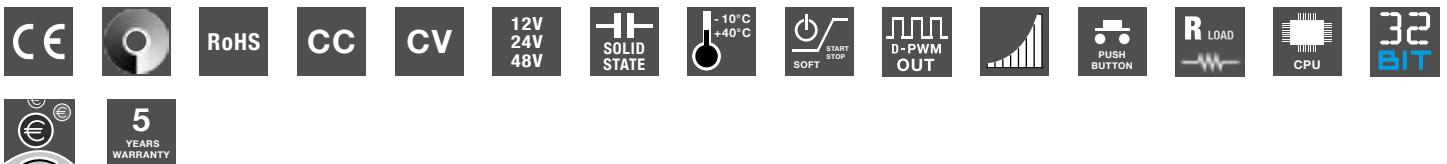
**FEATURES FOOT DIMMER**

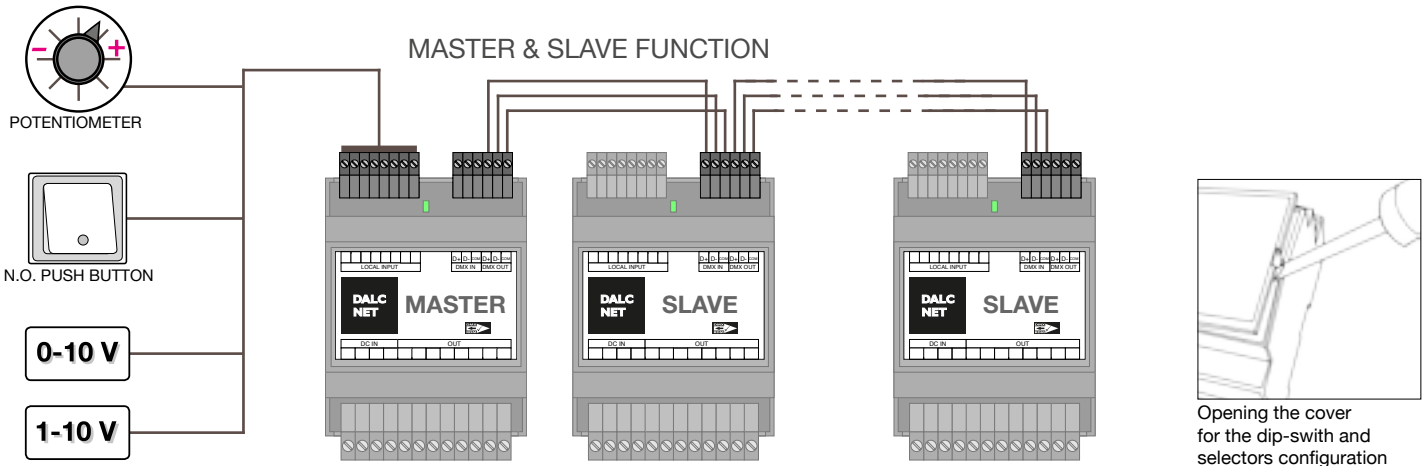
- DIMMER+FADER+DRIVER
- DC Input: 12-24-48 Vdc
- Command: N.O. Push-button
- Current or Voltage Outputs for R loads
- Multi Plug EU / UK / US
- Adjusting the brightness up to completed off
- Soft start and soft stop
- Optimized Output curve
- Typical efficiency > 95%
- 100% functional test - 5 years warranty

CODE	CV / CC	Supply Voltage	Output	Channels	Command
<b>DLC1224-1CV-PE</b>	CV	12-24V DC	1 x 5A	1	N.O. Push button
<b>DLC1248-1CC350-PE</b>	CC	12-48V DC	1 x 350mA	1	N.O. Push button
<b>DLC1248-1CC500-PE</b>	CC	12-48V DC	1 x 500mA	1	N.O. Push button

POWER SUPPLY AND CABLE ON REQUEST.

DLC SINGLE CHANNEL				
	12-24V DC		12-48V DC	
	Constant Voltage		Constant Current	
Output Current	5 A		350 mA	500 mA
Nominal Power 12V	60 W		4.2 W	6 W
Nominal Power 24V	120 W		8.4 W	12 W
Nominal Power 48V	-		16.8 W	24 W
Supply Voltage	min: 10.8 Vdc - max: 26.4 Vdc		min: 10.8 Vdc - max: 52.8 Vdc	
D-PWM Dimming Frequency	300 Hz		300 Hz	
Ambient Temperature	min: -10 C° max: +40 C°		min: -10 C° max: +40 C°	
Protection Grade	IP20		IP20	

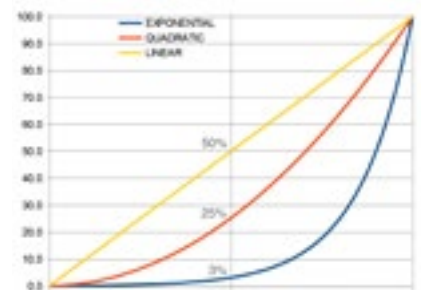




**DIMMING CURVE - CURVA DI INTENSITA'**

DALCNET dimmers convert the intensity value input (0 to 255) to an intensity value of output following an optimized curve. Keeping same selectors settings, DALI, DMX and MODBUS variants perform the same curve and thus can be integrated perfectly in the same installation.

I dimmer DALCNET convertono il valore di intensità di ingresso (da 0 a 255) in un valore di intensità di uscita seguendo una curva ottimizzata. A parità di impostazione sui selettori, sia le varianti DALI che DMX che MODBUS eseguono la medesima curva e quindi si possono integrare perfettamente nello stessa installazione.



**DESCRIPTION OF SYMBOLS - DESCRIZIONE SIMBOLI**

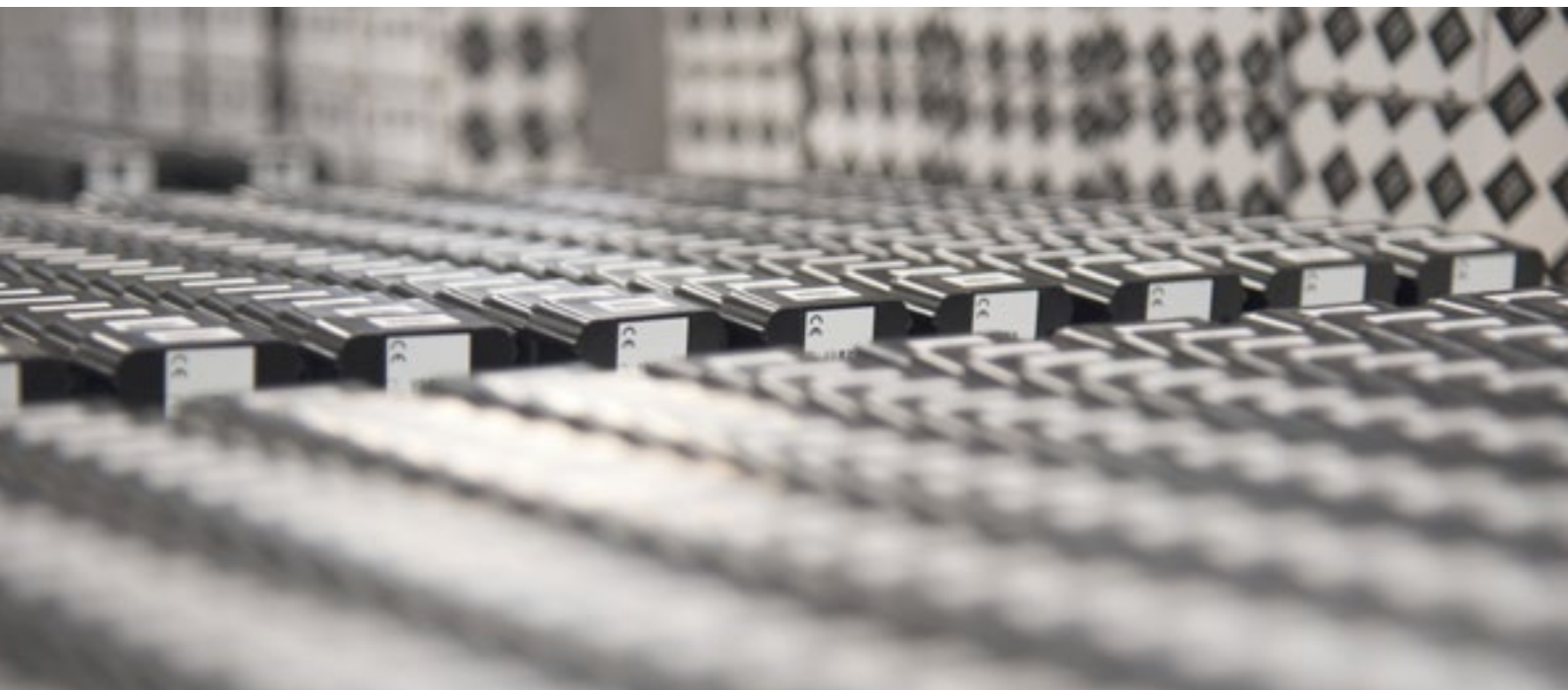
	Color		CE		Constant Current		Constant Voltage		DC 12V 24V 48V		DC 12V 24V
	Dimming		Alternate Current		Trailing Edge		Protection Grade		D-PMW IN		D-PMW OUT
	Saturation		Resistive Load		Inductive Load		Capacitive Load		Input 0-10		Input 1-10
	Tunable Withe		Push button		Curve		Solid State Capacitor		Temp. -10°C +40°C		Temp. -40°C +60°C
	Dim to Warm		Soft Start		Potentiometer		Adjustable Minimum of Dimming		Master & Slave function		Fast Plug
	Clock		SORAA Certificate		DMX512-RDM		DALI		Modbus		RoHS
	Bluetooth		CPU		32 Bit DSP		Relay Driver		Energy Saving		Warranty
	App Bluedimmer		App Casambi		Analogic Automatic Detection		Push Menü		Touch		Patent Pending
	New Push Menü		Multi Input								





DALC  
NET

LIGHTING  
SOLUTIONS

ELECTRONIC  
SOLUTIONS



 This catalog supersedes all previous ones. All products are designed and manufactured in compliance with the European Safety regulation. All the information contained in this catalog are not binding, and may be subject of changes, due to the improvement of the product, without prior notice. We cannot be held responsible for any eventual misprints or improper use of this catalogue and have the right to modify its contents without giving notice of any sort. All trademarks, logos, images are the propriety of their respective owners. All rights reserved. For complete and updated Technical data sheets visit the manufacturer's website: <http://dalcnet.com>. We are thankful to our partners for having provided the pictures of some of their implemented projects. That contributed to the final drawing-up of Dalcnet catalogue.

 Il presente catalogo sostituisce i precedenti. Tutti i prodotti sono progettati e costruiti nel rispetto delle norme Europee sulla sicurezza. Tutte le indicazioni riportate nel presente catalogo non sono vincolanti, e possono essere soggette a modifiche atte a migliorare il prodotto, anche senza preavviso. Si declina ogni responsabilità su eventuali errori di stampa o sull'uso improprio del presente catalogo e si riserva la facoltà di modificarne il contenuto senza alcun obbligo di preavviso. Tutti i marchi, logo, immagini sono di proprietà dei rispettivi proprietari. Tutti i diritti riservati. Per i Manuali Tecnici completi e aggiornati consultare il sito internet del produttore: <http://dalcnet.com>. Ringraziamo i nostri partners per averci fornito le fotografie dei progetti realizzati, contribuendo alla realizzazione del catalogo Dalcnet.

# DALC NET

**DALCNET s.r.l.**

ITALY

Via A. Meucci, 35 - 36040 Brendola (VI)

tel. +39 0444 1836680

www.dalcnet.com - info@dalcnet.com

OUR DISTRIBUTORS:



**Digimax s.r.l.**

ITALY

Via dei Laghi, 31

36077 Altavilla Vicentina (VI)

tel. +39 0444 574066 - fax. +39 0444 574600

www.digimax.it - digimax@digimax.it



**Electrónica Olfer**

SPAIN

Avda. de la industria 6-8, Naves 20-21

28108 Alcobendas - Madrid

Tlf: +34 91 4840850 - Fax: +34 91 4840851

web: www.olfer.com - e-mail: info@olfer.com



**Power Technic ApS**

DENMARK

Elsensbakken 19, 3600 Frederikssund

Tlf: 70 208 210, Fax: 32 108 109

E-mail: salg@powertechnic.dk

Web: www.powertechnic.dk



**Telerex**

NETHERLANDS

Minervum 7139 - 4817 ZN Breda

Tel.: +31 76 578 20 00 - Fax: +31 76 571 14 77

BELGIUM

Bisschoppenhoflaan 255 - 2100 Antwerpen

Tel.: +32 3 326 40 00 - Fax: +32 3 326 31 17

www.telereurope.com - info@telereurope.com



**Cats s.a.**

FRANCE

19, Avenue de Norvège

91140 Villebon Sur Yvette

Phone + 33 1 69 07 08 24

Fax + 33 1 69 07 17 23

www.cats-france.fr